

SERIE

P

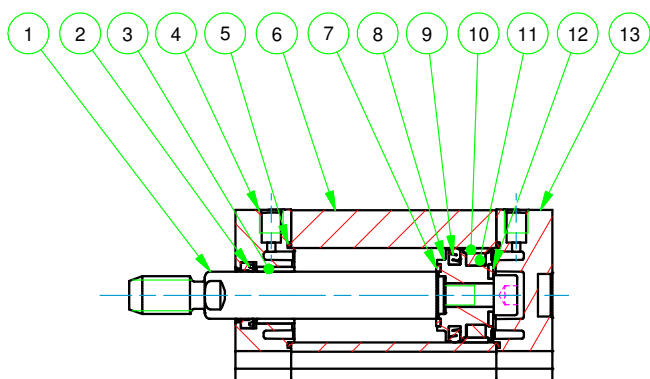
CILINDRI COMPATTI ISO 21287
ISO 21287 COMPACT CYLINDERS

CARATTERISTICHE TECNICHE - TECHNICAL CHARACTERISTICS

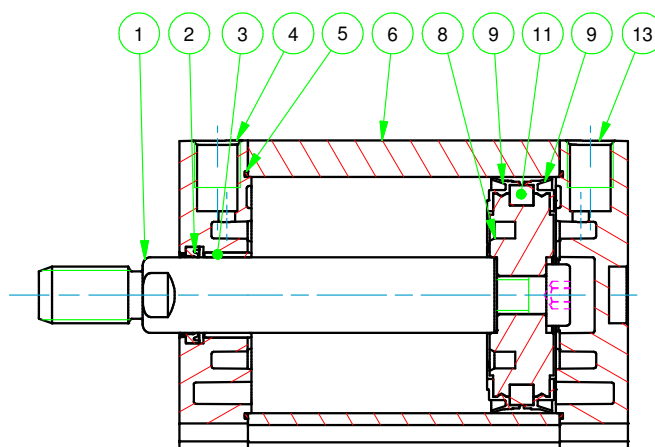
| | |
|---|--|
| Pressione di esercizio <i>Working pressure</i> | 1 ÷ 10 bar (doppio effetto - <i>double acting</i>) 2 ÷ 10 bar (semplice effetto - <i>single acting</i>) |
| Temperatura di esercizio <i>Working temperature</i> | 0 ÷ +80 °C (-20 °C con aria secca - <i>with dry air</i>) 0 ÷ +150 °C (con guarnizioni per alte temperature - <i>with high temperature seals</i>) |
| Versioni - Versions | semplice effetto - doppio effetto - antirrotazione - stelo passante - tandem <i>single acting - double acting - anti-rotary - double rod - tandem</i> |
| Alesaggi - Bores | ∅ 20 - 25 - 32 - 40 - 50 - 63 - 80 - 100 - 125 |
| Corse - Strokes | vedere tabelle corse standard - <i>see standard stroke tables</i> |
| Fluido - Fluid | aria compressa filtrata, non lubrificata - <i>compressed filtered, non lubricated air</i> |

CARATTERISTICHE COSTRUTTIVE - CONSTRUCTIVE CHARACTERISTICS

| | | |
|-----|--|---|
| ① | Stelo - Rod | acciaio inox AISI 303 - <i>stainless steel AISI 303</i> |
| ② | Guarnizione stelo - Rod seal | poliuretano - <i>polyurethane</i> |
| ③ | Boccola - Bush | acciaio+PTFE - <i>steel+PTFE</i> |
| ④ ⑬ | Testate - Covers | alluminio pressofuso verniciato - <i>painted die cast aluminium</i> |
| ⑤ | O-ring | NBR |
| ⑥ | Tubo - Tube | alluminio anodizzato - <i>anodized aluminium</i> |
| ⑦ ⑫ | Paracolpo - Bumper | NBR (∅ 20 -25) |
| ⑧ | Pistone - Piston | alluminio - <i>aluminium</i> |
| ⑨ | Guarnizione pistone - Piston seal | NBR (∅ 20 -25) - PU (∅ 32 ÷ 125) |
| ⑩ | Pattino di guida - Guide ring | PBT+PTFE (∅ 20 -25) |
| ⑪ | Magnete - Magnet | plastoferrite - <i>rubber magnet</i> |
| | Viti - Screws | acciaio zincato - <i>zinc coated steel</i> |
| | Molla - Spring | acciaio - <i>steel</i> |
| | Dado stelo - Rod nut | acciaio zincato - <i>zinc coated steel</i> |



∅20 - ∅25



∅32 ÷ ∅125

CHIAVE DI CODIFICA

KEY CODE

| | | | | | | | | | | | | | | | |
|-----------------------|----------|----------|--|--|----------|---|----------|---|----------|-------------------------|----------|----------|----------|----------|----------|
| P | D | M | | 0 | 5 | 0 | . | 0 | 3 | 0 | . | G | S | . | F |
| | | | | ALESAGGIO - BORE (Ø) | | CORSA - STROKE (mm) | | | | OPZIONE - OPTION | | | | | |
| | | | | 020 - 025 - 032 - 040 050 - 063 - 080 - 100 - 125 | | vedere tabelle corse std see std stroke tables | | | | EX ATEX II 2GD c T4 | | | | | |
| | | | | VERSIONE - VERSION | | | | OPZIONE - OPTION | | | | | | | |
| | | | | A con staffa antirotazione with anti-rotation bracket | | | | S viti inox SS screws | | | | | | | |
| | | | | VERSIONE - VERSION | | | | STELO - ROD | | | | | | | |
| | | | | P stelo passante double rod | | | | F femmina female | | | | | | | |
| | | | | VERSIONE - VERSION | | | | M maschio male | | | | | | | |
| | | | | M magnetico magnetic | | | | FT forato telescopico telescopic hollow rod | | | | | | | |
| | | | | non magnetico non-magnetic | | | | OPZIONE - OPTION | | | | | | | |
| | | | | VERSIONE - VERSION | | | | V femmina female | | | | | | | |
| | | | | S semplice effetto molla anteriore single acting front spring | | | | Z maschio male | | | | | | | |
| | | | | SE semplice effetto molla posteriore single acting rear spring | | | | GUARNIZIONI - SEALS | | | | | | | |
| | | | | D doppio effetto double acting | | | | guarnizioni standard standard seals GS | | | | | | | |
| SERIE - SERIES | | | | P tubo profilato con cave per sensori tube with slots for sensors | | | | guarnizione stelo per alte temperature high temperature rod seal VR | | | | | | | |
| | | | | | | | | tutte le guarnizioni per alte temperature all seals for high temperature VA | | | | | | | |
| | | | | | | | | guarnizione stelo EU P5600 EU P5600 rod seal PS | | | | | | | |
| | | | | | | | | guarnizione stelo E8 E8 rod seal ES | | | | | | | |
| | | | | | | | | guarnizione stelo EW (raschiatore metallico) EW rod seal (metal scraper) WS | | | | | | | |

SERIE

P

Cilindri tandem vedi pagina 187

Tandem cylinders see page 187

ESECUZIONI A RICHIESTA - ON REQUEST

Stelo forato - *Hollow rod*

Stelo prolungato (WH) - *Extended rod (WH)*

Filetti speciali (dado stelo non fornito) - *Special thread (without rod nut)*

Viti in acciaio inox - *Stainless steel screws*

ATEX II 2GD c T4

FORZE TEORICHE DI TRAZIONE (P=6 bar)

THEORETICAL FORCES OF TRACTION (P=6 bar)

| | | Ø | 020 | 025 | 032 | 040 | 050 | 063 | 080 | 100 | 125 |
|--------------|-------------------|-----|-----|-----|-----|-----|-------|-------|-------|-------|-------|
| PDM | SPINTA THRUST | [N] | 189 | 295 | 483 | 753 | 1.178 | 1.870 | 3.016 | 4.712 | 7.363 |
| | TRAZIONE TRACTION | [N] | 141 | 247 | 415 | 686 | 1.057 | 1.750 | 2.827 | 4.524 | 7.069 |
| PDMA | SPINTA THRUST | [N] | 189 | 295 | 483 | 753 | 1.178 | 1.870 | 3.016 | 4.712 | 7.363 |
| | TRAZIONE TRACTION | [N] | 141 | 247 | 415 | 686 | 1.057 | 1.750 | 2.827 | 4.524 | 7.069 |
| PDMP | SPINTA THRUST | [N] | 141 | 247 | 415 | 686 | 1.057 | 1.750 | 2.827 | 4.524 | 7.069 |
| | TRAZIONE TRACTION | [N] | 141 | 247 | 415 | 686 | 1.057 | 1.750 | 2.827 | 4.524 | 7.069 |
| PDMPA | SPINTA THRUST | [N] | 141 | 247 | 415 | 686 | 1.057 | 1.750 | 2.827 | 4.524 | 7.069 |
| | TRAZIONE TRACTION | [N] | 141 | 247 | 415 | 686 | 1.057 | 1.750 | 2.827 | 4.524 | 7.069 |

DIAGRAMMA TEORICO CARICO AMMISSIBILE

THEORETICAL ALLOWABLE LOAD

SERIE
P

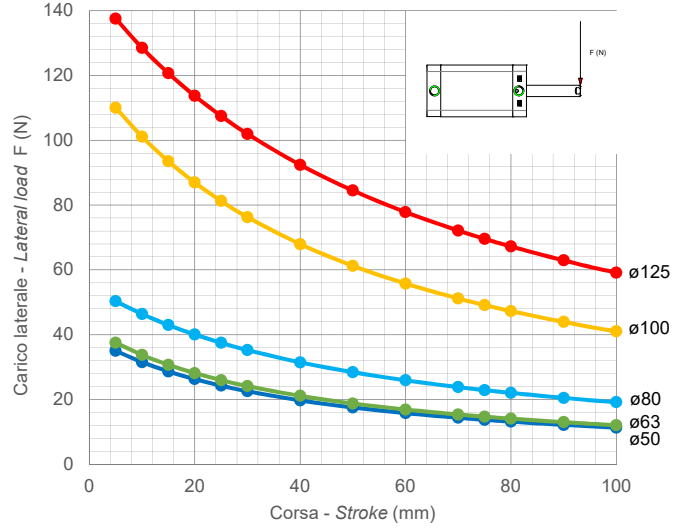
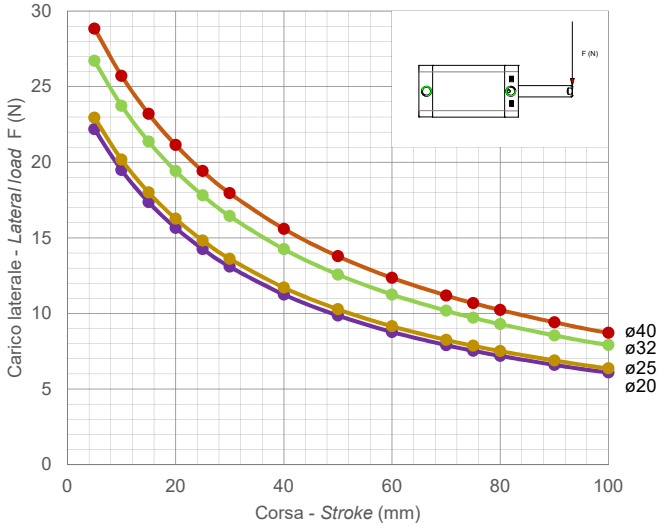


DIAGRAMMA TEORICO CARICO AMMISSIBILE

THEORETICAL ALLOWABLE LOAD

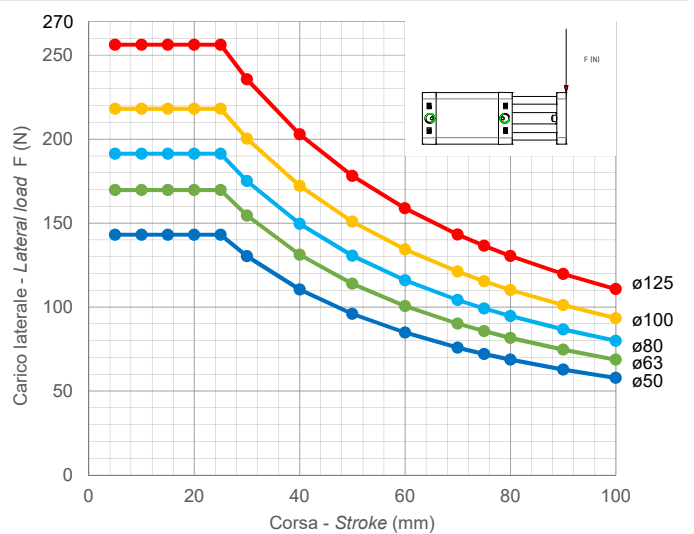
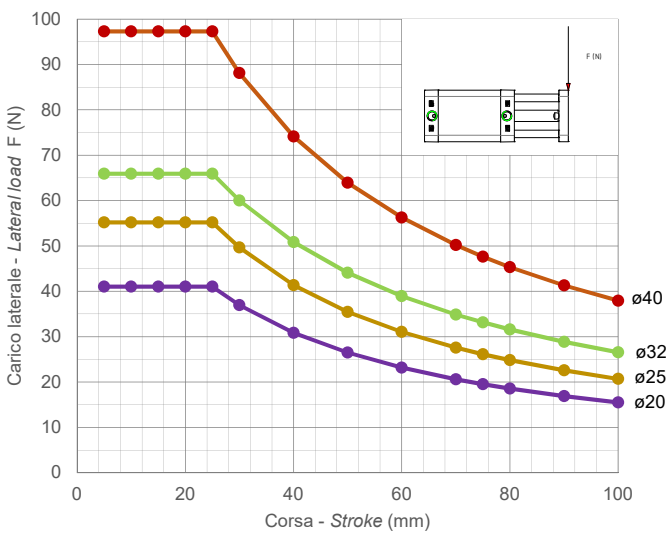
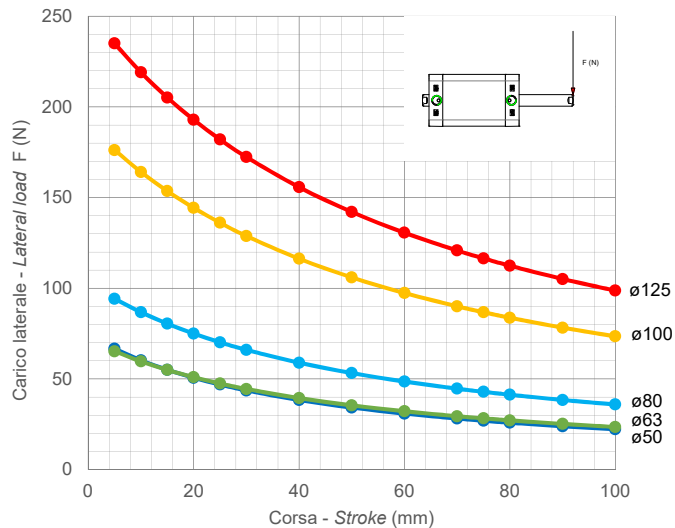
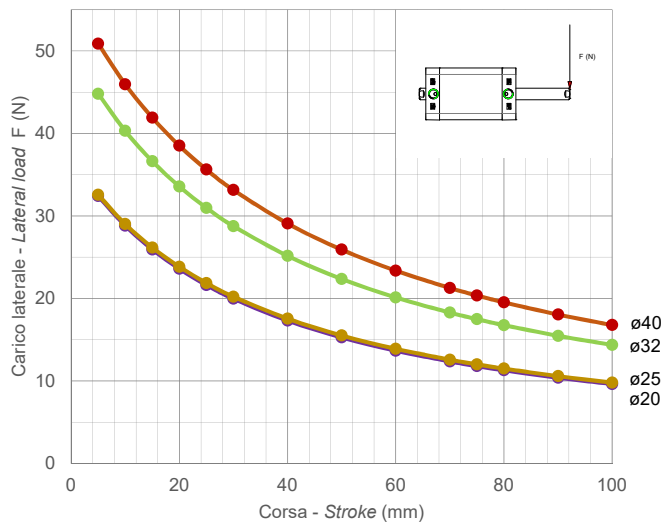


DIAGRAMMA TEORICO CARICO AMMISSIBILE

THEORETICAL ALLOWABLE LOAD



SERIE

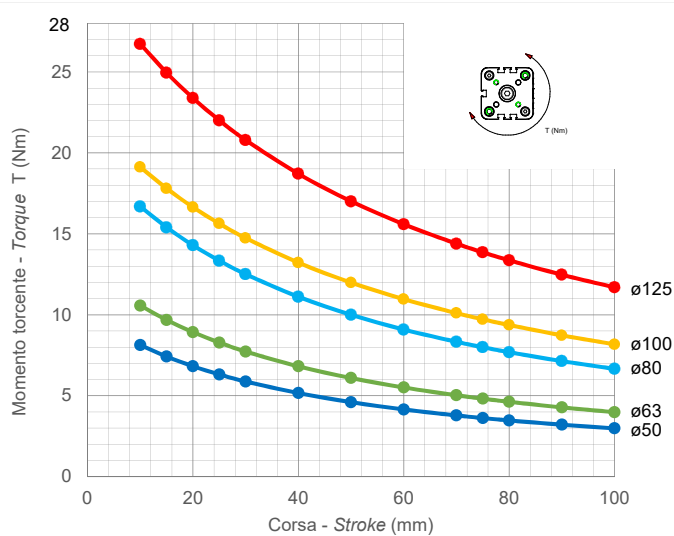
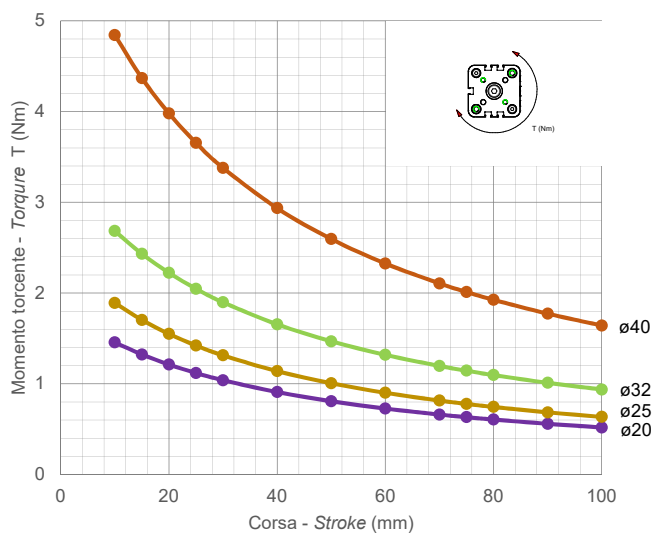
P

DIAGRAMMA TEORICO COPPIA AMMISSIBILE

PDMA

PDMPA

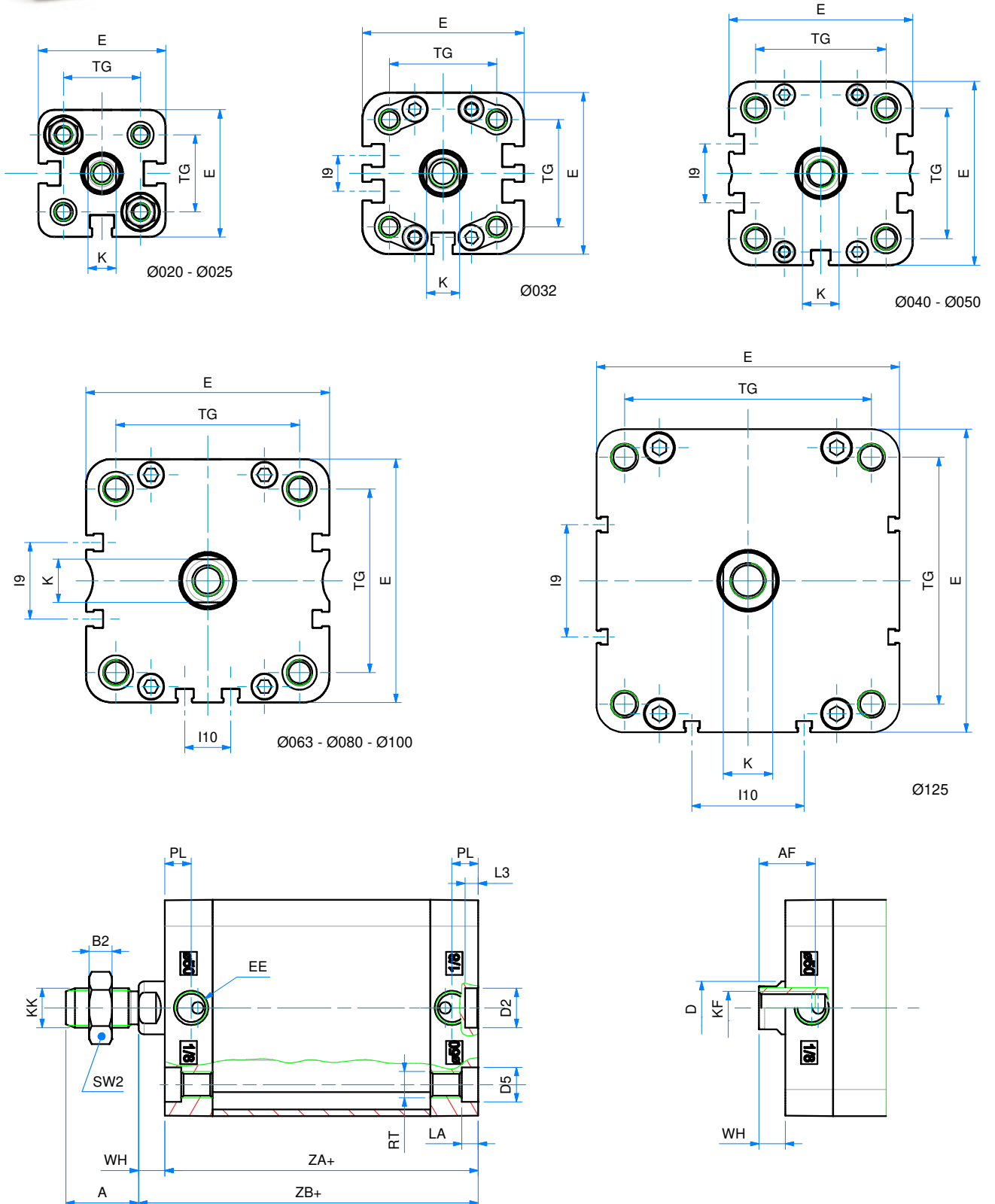
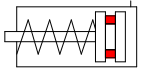
THEORETICAL ALLOWABLE TORQUE



SEMPLICE EFFETTO MAGNETICO - MOLLA ANTERIORE

SINGLE ACTING MAGNETIC - FRONT SPRING

SERIE
P



SEMPLICE EFFETTO MAGNETICO - MOLLA ANTERIORE
SINGLE ACTING MAGNETIC - FRONT SPRING

| DIMENSIONI - DIMENSIONS | | | | | | | | | |
|--------------------------------|------------|------------|------------|------------|------------|------------|------------|------------|------------|
| Ø | 020 | 025 | 032 | 040 | 050 | 063 | 080 | 100 | 125 |
| A | 16 | 16 | 19 | 19 | 22 | 22 | 28 | 28 | 40 |
| AF | 15 | 15 | 15 | 15 | 17 | 17 | 20 | 22 | 25 |
| B2 | 5 | 5 | 6 | 6 | 7 | 7 | 8 | 8 | 9 |
| Ø D | 10 | 10 | 12 | 12 | 16 | 16 | 20 | 25 | 25 |
| Ø D2 | 9 | 9 | 9 | 9 | 12 | 12 | 12 | 12 | 12 |
| Ø D5 | 7,5 | 7,5 | 9 | 9 | 10,5 | 10,5 | 13,5 | 13,5 | 13,5 |
| E | 36 | 40 | 49 | 54,5 | 65,5 | 77 | 95,5 | 113,5 | 135 |
| EE | M5 | M5 | G1/8 | G1/8 | G1/8 | G1/8 | G1/8 | G1/8 | G1/4 |
| I9 | - | - | 10,8 | 12,8 | 21 | 25,8 | 30 | 50 | 50 |
| I 10 | - | - | - | - | - | 13 | 18 | 35 | 50 |
| K | 8 | 8 | 10 | 10 | 13 | 13 | 17 | 22 | 22 |
| KF | M6 | M6 | M8 | M8 | M10 | M10 | M12 | M12 | M16 |
| KK | M8 | M8 | M10x1,25 | M10x1,25 | M12x1,25 | M12x1,25 | M16x1,5 | M16x1,5 | M20x1,5 |
| LA | 4,5 | 4,5 | 5 | 5 | 5 | 5 | 3 | 3 | - |
| L3 | 3 | 3 | 3 | 3 | 4 | 4 | 4 | 4 | 4 |
| PL | 7,5 | 7,5 | 7,5 | 8 | 8 | 7,5 | 8 | 10,5 | 10,5 |
| RT | M5 | M5 | M6 | M6 | M8 | M8 | M10 | M10 | M12 |
| SW2 | 13 | 13 | 17 | 17 | 19 | 19 | 24 | 24 | 30 |
| TG | 22 | 26 | 32,5 | 38 | 46,5 | 56,5 | 72 | 89 | 110 |
| WH | 6,5 | 6 | 6,5 | 7 | 8 | 8 | 9 | 10 | 11 |
| ZA+ | 37* | 39* | 44* | 45* | 45* | 49* | 54* | 67* | 81 |
| ZB+ | 43,5* | 45* | 50,5* | 52* | 53* | 57* | 63* | 77* | 92 |

+ = aggiungere lunghezza corsa (mm) - add stroke length (mm)

 Note: dado stelo compreso nella fornitura
 Note: rod nut included in the supply

* per corse - for strokes 035 - 040 - 050 - 060:

PSM 020 aggiungere - add +10 mm

PSM 025 - 032 - 040 - 050 - 063 aggiungere - add +20 mm

PSM 080 - 100 aggiungere - add +30 mm

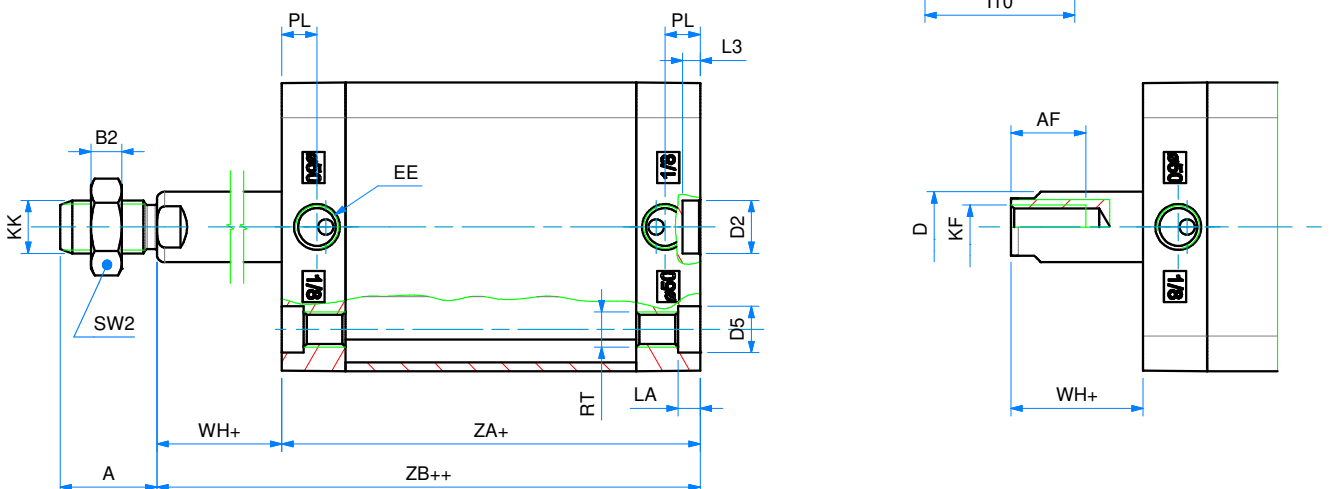
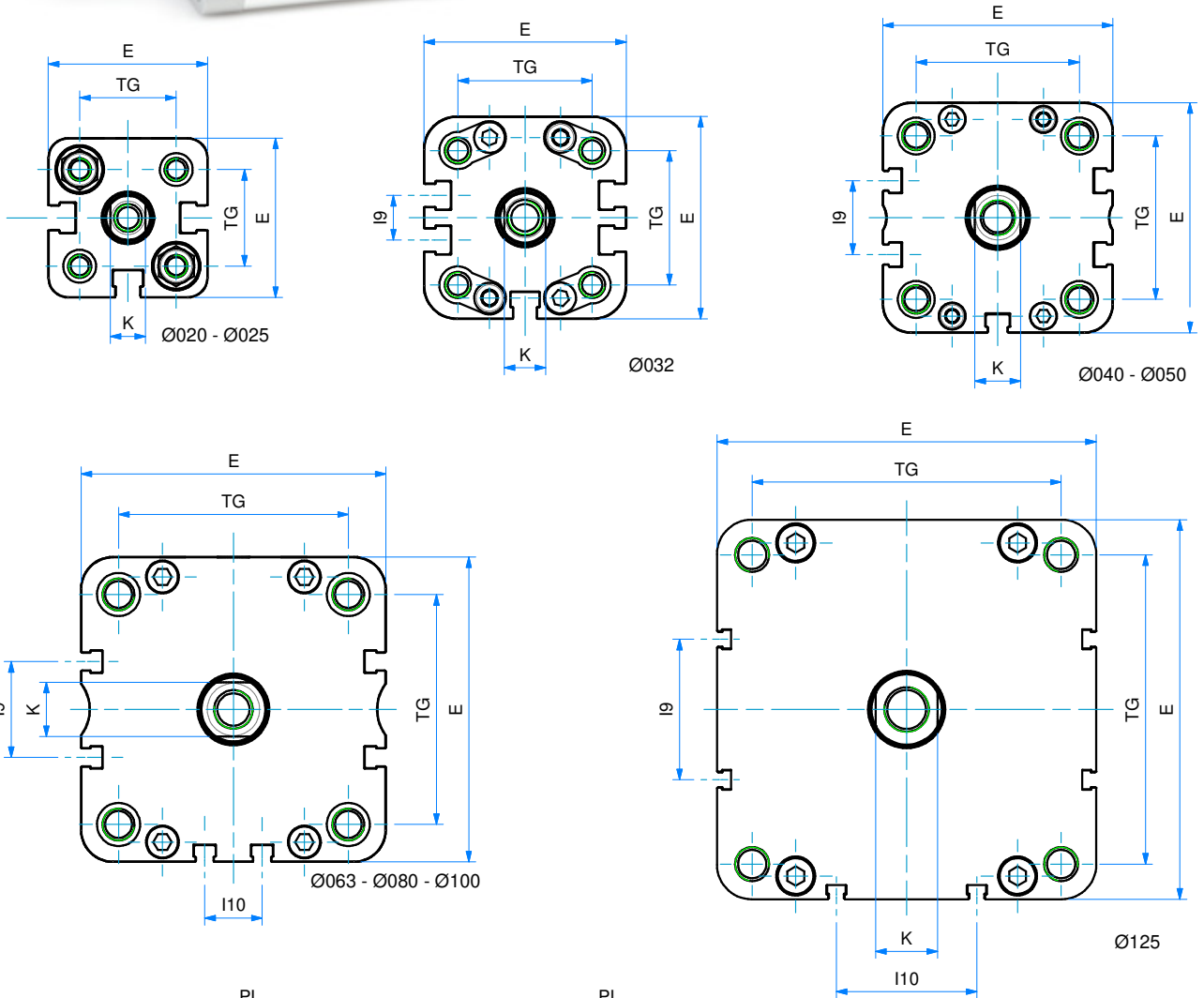
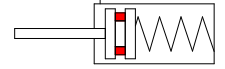
| Ø | CORSE STANDARD - STANDARD STROKES |
|------------|--|
| 020 | 5 - 10 - 15 - 20 - 25 - 30 - 35 - 40 - 50 - 60 |
| 025 | 5 - 10 - 15 - 20 - 25 - 30 - 35 - 40 - 50 - 60 |
| 032 | 5 - 10 - 15 - 20 - 25 - 30 - 35 - 40 - 50 - 60 |
| 040 | 5 - 10 - 15 - 20 - 25 - 30 - 35 - 40 - 50 - 60 |
| 050 | 5 - 10 - 15 - 20 - 25 - 30 - 35 - 40 - 50 - 60 |
| 063 | 5 - 10 - 15 - 20 - 25 - 30 - 35 - 40 - 50 - 60 |
| 080 | 5 - 10 - 15 - 20 - 25 - 30 - 35 - 40 - 50 - 60 |
| 100 | 5 - 10 - 15 - 20 - 25 - 30 - 35 - 40 - 50 - 60 |
| 125 | 5 - 10 - 15 - 20 - 25 - 30 |

SEMPLICE EFFETTO MAGNETICO - MOLLA POSTERIORE

SINGLE ACTING MAGNETIC - REAR SPRING

SERIE

P



SEMPLICE EFFETTO MAGNETICO - MOLLA POSTERIORE
SINGLE ACTING MAGNETIC - REAR SPRING
DIMENSIONI - DIMENSIONS

| Ø | 020 | 025 | 032 | 040 | 050 | 063 | 080 | 100 | 125 |
|-------------|-------|-----|----------|----------|----------|----------|---------|---------|---------|
| A | 16 | 16 | 19 | 19 | 22 | 22 | 28 | 28 | 40 |
| AF | 15 | 15 | 15 | 15 | 17 | 17 | 20 | 22 | 25 |
| B2 | 5 | 5 | 6 | 6 | 7 | 7 | 8 | 8 | 9 |
| Ø D | 10 | 10 | 12 | 12 | 16 | 16 | 20 | 25 | 25 |
| Ø D2 | 9 | 9 | 9 | 9 | 12 | 12 | 12 | 12 | 12 |
| Ø D5 | 7,5 | 7,5 | 9 | 9 | 10,5 | 10,5 | 13,5 | 13,5 | 13,5 |
| E | 36 | 40 | 49 | 54,5 | 65,5 | 77 | 95,5 | 113,5 | 135 |
| EE | M5 | M5 | G1/8 | G1/8 | G1/8 | G1/8 | G1/8 | G1/8 | G1/4 |
| I9 | - | - | 10,8 | 12,8 | 21 | 25,8 | 30 | 50 | 50 |
| I10 | - | - | - | - | - | 13 | 18 | 35 | 50 |
| K | 8 | 8 | 10 | 10 | 13 | 13 | 17 | 22 | 22 |
| KF | M6 | M6 | M8 | M8 | M10 | M10 | M12 | M12 | M16 |
| KK | M8 | M8 | M10x1,25 | M10x1,25 | M12x1,25 | M12x1,25 | M16x1,5 | M16x1,5 | M20x1,5 |
| LA | 4,5 | 4,5 | 5 | 5 | 5 | 5 | 3 | 3 | - |
| L3 | 3 | 3 | 3 | 3 | 4 | 4 | 4 | 4 | 4 |
| PL | 7,5 | 7,5 | 7,5 | 8 | 8 | 7,5 | 8 | 10,5 | 10,5 |
| RT | M5 | M5 | M6 | M6 | M8 | M8 | M10 | M10 | M12 |
| SW2 | 13 | 13 | 17 | 17 | 19 | 19 | 24 | 24 | 30 |
| TG | 22 | 26 | 32,5 | 38 | 46,5 | 56,5 | 72 | 89 | 110 |
| WH+ | 6,5 | 6 | 6,5 | 7 | 8 | 8 | 9 | 10 | 11 |
| ZA+ | 37* | 39* | 44* | 45* | 45* | 49* | 54* | 67* | 81 |
| ZB++ | 43,5* | 45* | 50,5* | 52* | 53* | 57* | 63* | 77* | 92 |

+ = aggiungere lunghezza corsa (mm) - add stroke length (mm)

++ = 2 x lunghezza corsa - 2 x stroke length

Note: dado stelo compreso nella fornitura

Note: rod nut included in the supply

* per corse - for strokes 035 - 040 - 050 - 060:

PSEM 020 - 025 - 032 - 040 - 050 - 063 aggiungere - add +10 mm

PSEM 080 - 100 aggiungere - add +20 mm

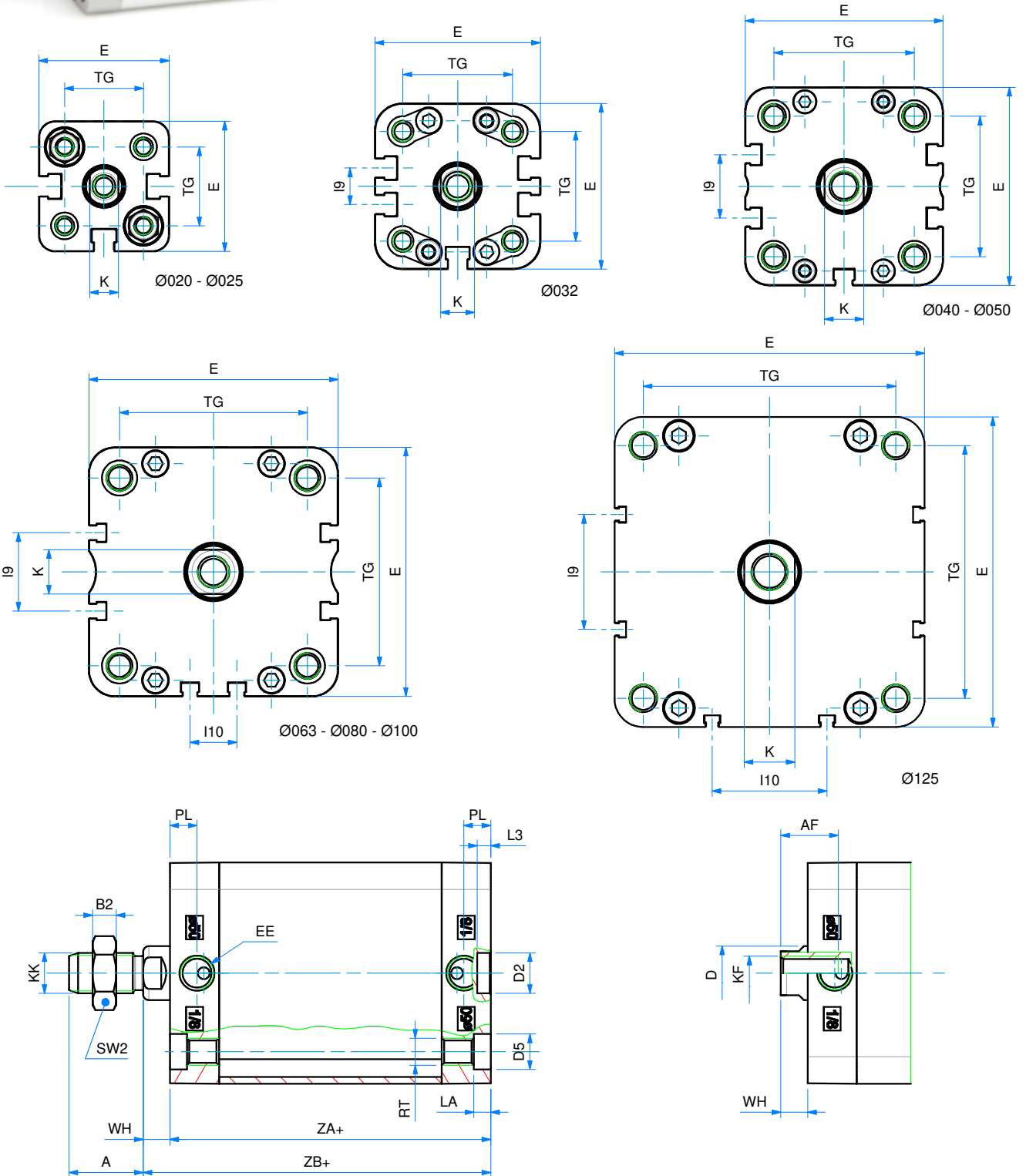
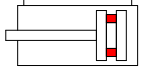
Ø CORSE STANDARD - STANDARD STROKES

| | |
|------------|--|
| 020 | 5 - 10 - 15 - 20 - 25 - 30 - 35 - 40 - 50 - 60 |
| 025 | 5 - 10 - 15 - 20 - 25 - 30 - 35 - 40 - 50 - 60 |
| 032 | 5 - 10 - 15 - 20 - 25 - 30 - 35 - 40 - 50 - 60 |
| 040 | 5 - 10 - 15 - 20 - 25 - 30 - 35 - 40 - 50 - 60 |
| 050 | 5 - 10 - 15 - 20 - 25 - 30 - 35 - 40 - 50 - 60 |
| 063 | 5 - 10 - 15 - 20 - 25 - 30 - 35 - 40 - 50 - 60 |
| 080 | 5 - 10 - 15 - 20 - 25 - 30 - 35 - 40 - 50 - 60 |
| 100 | 5 - 10 - 15 - 20 - 25 - 30 - 35 - 40 - 50 - 60 |
| 125 | 5 - 10 - 15 - 20 - 25 - 30 |

DOPPIO EFFETTO MAGNETICO

DOUBLE ACTING MAGNETIC

SERIE
P



DOPPIO EFFETTO MAGNETICO
DOUBLE ACTING MAGNETIC
DIMENSIONI - DIMENSIONS

| Ø | 020 | 025 | 032 | 040 | 050 | 063 | 080 | 100 | 125 |
|-------------|------|-----|----------|----------|----------|----------|---------|---------|----------|
| A | 16 | 16 | 19 | 19 | 22 | 22 | 28 | 28 | 40 |
| AF | 15 | 15 | 15 | 15 | 17 | 17 | 20 | 22 | 25 |
| B2 | 5 | 5 | 6 | 6 | 7 | 7 | 8 | 8 | 9 |
| Ø D | 10 | 10 | 12 | 12 | 16 | 16 | 20 | 25 | 25 |
| Ø D2 | 9 | 9 | 9 | 9 | 12 | 12 | 12 | 12 | 12 |
| Ø D5 | 7,5 | 7,5 | 9 | 9 | 10,5 | 10,5 | 13,5 | 13,5 | - |
| E | 36 | 40 | 49 | 54,5 | 65,5 | 77 | 95,5 | 113,5 | 135 |
| EE | M5 | M5 | G1/8 | G1/8 | G1/8 | G1/8 | G1/8 | G1/8 | G1/4 |
| I9 | - | - | 10,8 | 12,8 | 21 | 25,8 | 30 | 50 | 50 |
| I10 | - | - | - | - | - | 13 | 18 | 35 | 50 |
| K | 8 | 8 | 10 | 10 | 13 | 13 | 17 | 22 | 22 |
| KF | M6 | M6 | M8 | M8 | M10 | M10 | M12 | M12 | M16 |
| KK | M8 | M8 | M10x1,25 | M10x1,25 | M12x1,25 | M12x1,25 | M16x1,5 | M16x1,5 | M 20x1,5 |
| LA | 4,5 | 4,5 | 5 | 5 | 5 | 5 | 3 | 3 | - |
| L3 | 3 | 3 | 3 | 3 | 4 | 4 | 4 | 4 | 4 |
| PL | 7,5 | 7,5 | 7,5 | 8 | 8 | 7,5 | 8 | 10,5 | 10,5 |
| RT | M5 | M5 | M6 | M6 | M8 | M8 | M10 | M10 | M12 |
| SW2 | 13 | 13 | 17 | 17 | 19 | 19 | 24 | 24 | 30 |
| TG | 22 | 26 | 32,5 | 38 | 46,5 | 56,5 | 72 | 89 | 110 |
| WH | 6,5 | 6 | 6,5 | 7 | 8 | 8 | 9 | 10 | 11 |
| ZA+ | 37 | 39 | 44 | 45 | 45 | 49 | 54 | 67 | 81 |
| ZB+ | 43,5 | 45 | 50,5 | 52 | 53 | 57 | 63 | 77 | 92 |

+ = aggiungere lunghezza corsa (mm) - add stroke length (mm)

Note: dado stelo compreso nella fornitura
Note: rod nut included in the supply

OPZIONE V (FEMMINA) - Z (MASCIO) - OPTION V (FEMALE) - Z (MALE)

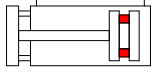
| Ø | 020 | 025 | 032 | 040 | 050 | 063 | 080 | 100 |
|------------|-----|----------|----------|----------|---------|---------|---------|---------|
| A | 16 | 22 | 22 | 24 | 32 | 32 | 40 | 40 |
| AF | 12 | 12 | 15 | 15 | 20 | 20 | 22 | 22 |
| Ø D | 10 | 10 | 12 | 16 | 20 | 20 | 25 | 25 |
| K | 8 | 8 | 10 | 13 | 17 | 17 | 22 | 22 |
| KF | M5 | M6 | M6 | M6 | M8 | M8 | M10 | M12 |
| KK | M8 | M10x1,25 | M10x1,25 | M12x1,25 | M16x1,5 | M16x1,5 | M20x1,5 | M20x1,5 |

Ø CORSE STANDARD - STANDARD STROKES

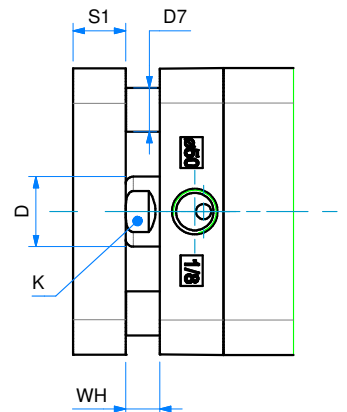
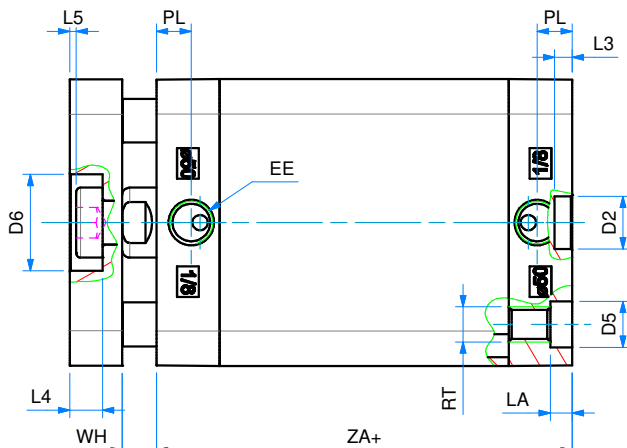
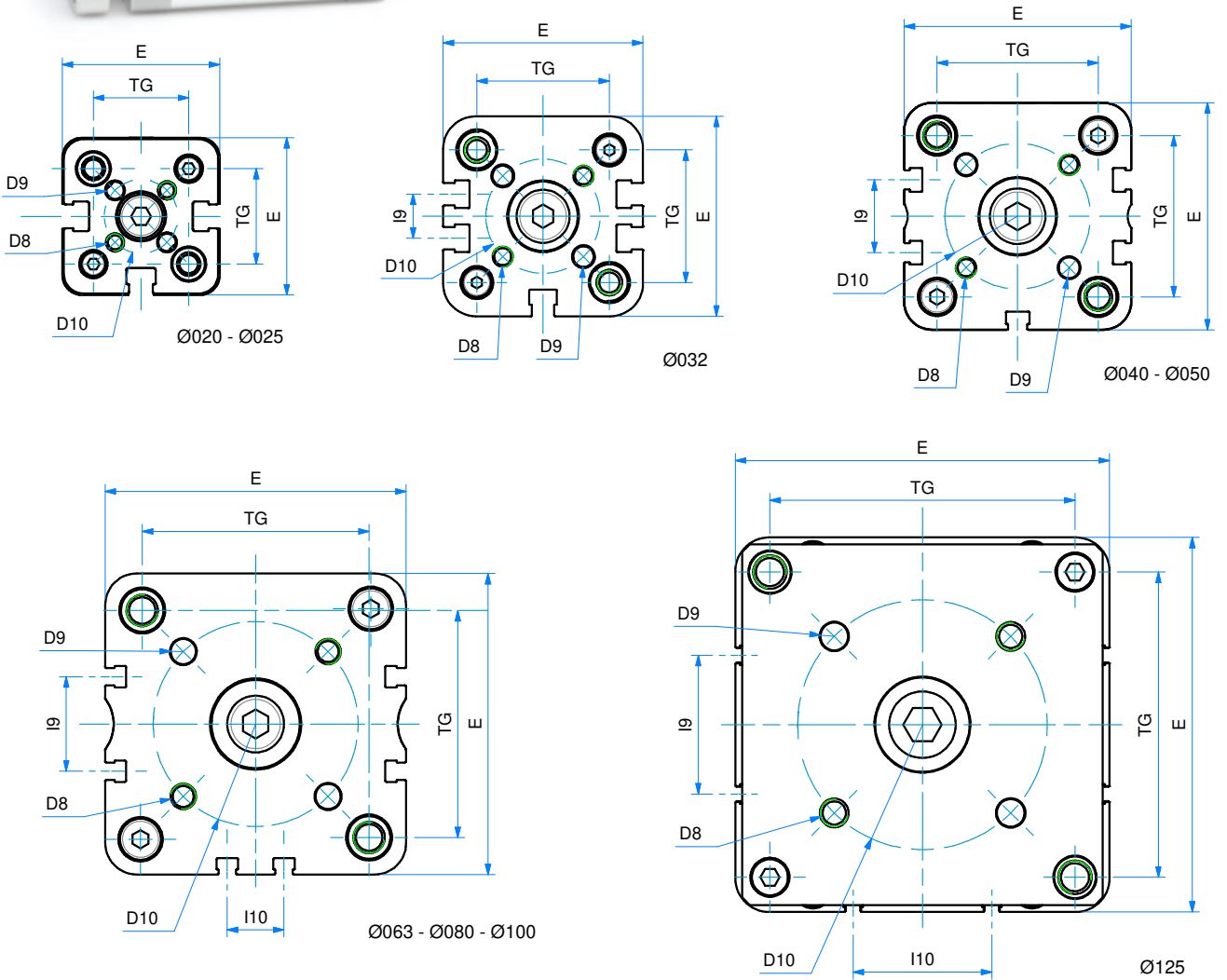
| | |
|------------|---|
| 020 | 5 - 10 - 15 - 20 - 25 - 30 - 40 - 50 - 60 - 70 - 75 - 80 - 90 - 100 - 125 - 160 - 200 - 250 |
| 025 | 5 - 10 - 15 - 20 - 25 - 30 - 40 - 50 - 60 - 70 - 75 - 80 - 90 - 100 - 125 - 160 - 200 - 250 |
| 032 | 5 - 10 - 15 - 20 - 25 - 30 - 40 - 50 - 60 - 70 - 75 - 80 - 90 - 100 - 125 - 160 - 200 - 250 - 300 - 350 - 400 |
| 040 | 5 - 10 - 15 - 20 - 25 - 30 - 40 - 50 - 60 - 70 - 75 - 80 - 90 - 100 - 125 - 160 - 200 - 250 - 300 - 350 - 400 |
| 050 | 5 - 10 - 15 - 20 - 25 - 30 - 40 - 50 - 60 - 70 - 75 - 80 - 90 - 100 - 125 - 160 - 200 - 250 - 300 - 350 - 400 |
| 063 | 5 - 10 - 15 - 20 - 25 - 30 - 40 - 50 - 60 - 70 - 75 - 80 - 90 - 100 - 125 - 160 - 200 - 250 - 300 - 350 - 400 |
| 080 | 5 - 10 - 15 - 20 - 25 - 30 - 40 - 50 - 60 - 70 - 75 - 80 - 90 - 100 - 125 - 160 - 200 - 250 - 300 - 350 - 400 |
| 100 | 5 - 10 - 15 - 20 - 25 - 30 - 40 - 50 - 60 - 70 - 75 - 80 - 90 - 100 - 125 - 160 - 200 - 250 - 300 - 350 - 400 |
| 125 | 5 - 10 - 15 - 20 - 25 - 30 - 40 - 50 - 60 - 70 - 75 - 80 - 90 - 100 - 125 - 160 - 200 - 250 - 300 - 350 - 400 |

DOPPIO EFFETTO MAGNETICO ANTIROTAZIONE

DOUBLE ACTING MAGNETIC ANTI-ROTATION



SERIE
P



DOPPIO EFFETTO MAGNETICO ANTIROTAZIONE
DOUBLE ACTING MAGNETIC ANTI-ROTATION

| DIMENSIONI - DIMENSIONS | | | | | | | | | |
|--------------------------------|------------|------------|------------|------------|------------|------------|------------|------------|------------|
| Ø | 020 | 025 | 032 | 040 | 050 | 063 | 080 | 100 | 125 |
| Ø D | 10 | 10 | 12 | 12 | 16 | 16 | 20 | 25 | 25 |
| Ø D2 | 9 | 9 | 9 | 9 | 12 | 12 | 12 | 12 | 12 |
| Ø D5 | 7,5 | 7,5 | 9 | 9 | 10,5 | 10,5 | 13,5 | 13,5 | 13,5 |
| Ø D6 | 11 | 14 | 17 | 17 | 22 | 22 | 28 | 30 | 34 |
| Ø D7 | 5 | 6 | 6 | 8 | 10 | 10 | 14 | 14 | 14 |
| D8 | M4 | M5 | M5 | M5 | M6 | M6 | M8 | M10 | M10 |
| Ø D9 | 4 | 5 | 5 | 5 | 6 | 6 | 8 | 10 | 10 |
| Ø D10 | 17 | 22 | 28 | 33 | 42 | 50 | 65 | 80 | 90 |
| E | 36 | 40 | 49 | 54,5 | 65,5 | 77 | 95,5 | 113,5 | 135 |
| EE | M5 | M5 | G1/8 | G1/8 | G1/8 | G1/8 | G1/8 | G1/8 | G1/4 |
| I9 | - | - | 10,8 | 12,8 | 21 | 25,8 | 30 | 50 | 50 |
| I10 | - | - | - | - | - | 13 | 18 | 35 | 50 |
| K | 8 | 8 | 10 | 10 | 13 | 13 | 17 | 22 | 22 |
| LA | 4,5 | 4,5 | 5 | 5 | 5 | 5 | 3 | 3 | - |
| L3 | 3 | 3 | 3 | 3 | 4 | 4 | 4 | 4 | 4 |
| L4 | 5 | 5 | 6,5 | 6,5 | 7,5 | 7,5 | 9 | 10 | 11,2 |
| L5 | 1 | 1 | 1,5 | 1,5 | 1,5 | 1,5 | 2 | 3 | 2,2 |
| PL | 7,5 | 7,5 | 7,5 | 8 | 8 | 7,5 | 8 | 10,5 | 10,5 |
| RT | M5 | M5 | M6 | M6 | M8 | M8 | M10 | M10 | M12 |
| S1 | 8 | 8 | 10 | 10 | 12 | 12 | 14 | 14 | 18 |
| TG | 22 | 26 | 32,5 | 38 | 46,5 | 56,5 | 72 | 89 | 110 |
| WH | 6,5 | 6 | 6,5 | 7 | 8 | 8 | 9 | 10 | 11 |
| ZA+ | 37 | 39 | 44 | 45 | 45 | 49 | 54 | 67 | 81 |
| ZB+ | 43,5 | 45 | 50,5 | 52 | 53 | 57 | 63 | 77 | 92 |

+ = aggiungere lunghezza corsa (mm) - add stroke length (mm)

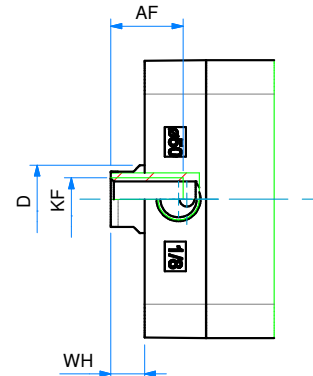
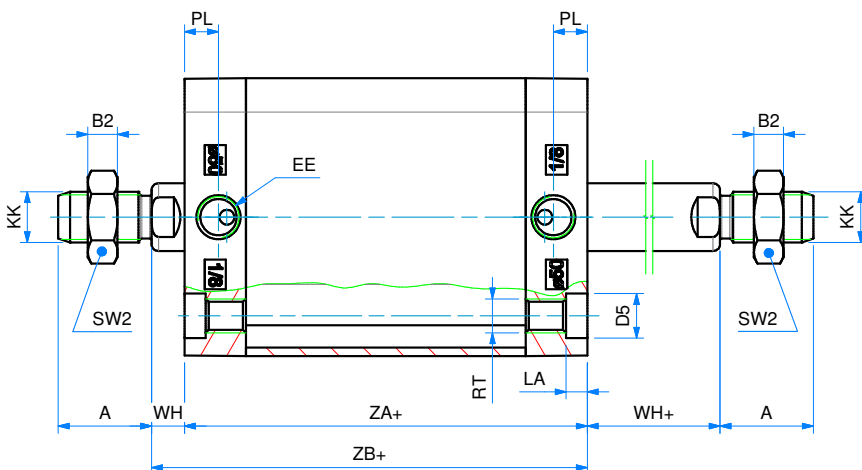
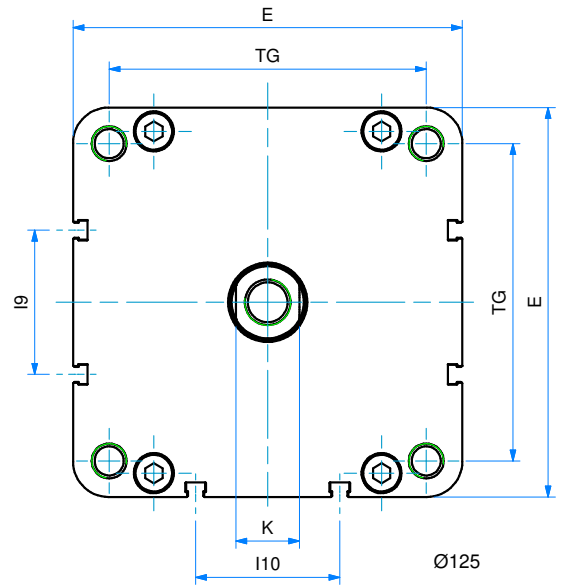
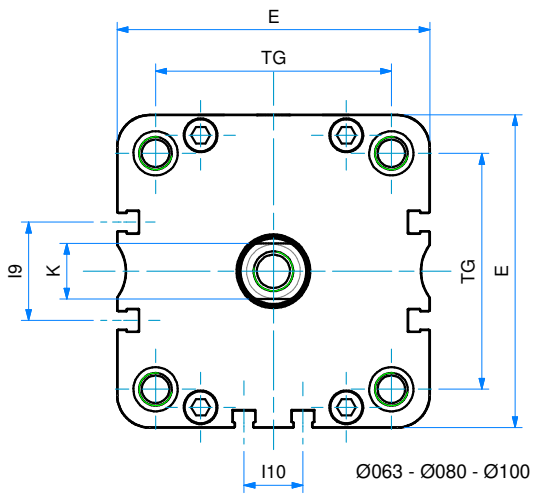
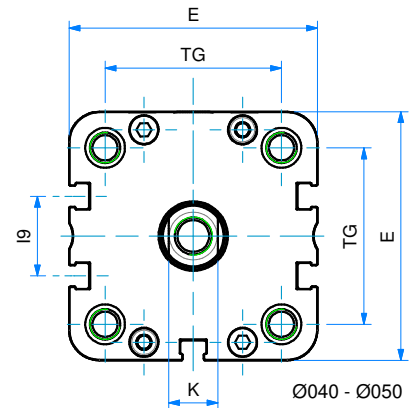
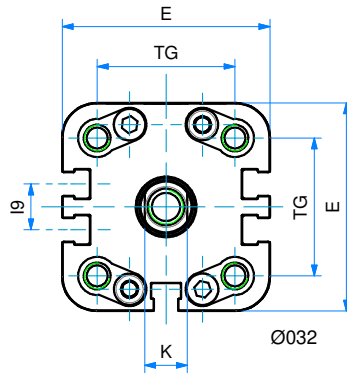
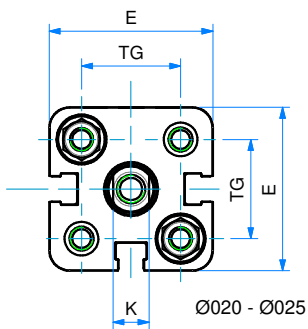
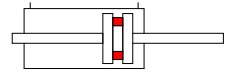
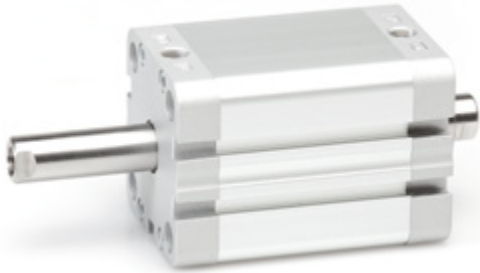
 Note: dado stelo compreso nella fornitura
 Note: rod nut included in the supply

| Ø | CORSE STANDARD - STANDARD STROKES |
|------------|---|
| 020 | 5 - 10 - 15 - 20 - 25 - 30 - 40 - 50 - 60 - 70 - 75 - 80 - 90 - 100 - 125 - 160 - 200 |
| 025 | 5 - 10 - 15 - 20 - 25 - 30 - 40 - 50 - 60 - 70 - 75 - 80 - 90 - 100 - 125 - 160 - 200 |
| 032 | 5 - 10 - 15 - 20 - 25 - 30 - 40 - 50 - 60 - 70 - 75 - 80 - 90 - 100 - 125 - 160 - 200 - 250 - 300 - 350 - 400 |
| 040 | 5 - 10 - 15 - 20 - 25 - 30 - 40 - 50 - 60 - 70 - 75 - 80 - 90 - 100 - 125 - 160 - 200 - 250 - 300 - 350 - 400 |
| 050 | 5 - 10 - 15 - 20 - 25 - 30 - 40 - 50 - 60 - 70 - 75 - 80 - 90 - 100 - 125 - 160 - 200 - 250 - 300 - 350 - 400 |
| 063 | 5 - 10 - 15 - 20 - 25 - 30 - 40 - 50 - 60 - 70 - 75 - 80 - 90 - 100 - 125 - 160 - 200 - 250 - 300 - 350 - 400 |
| 080 | 5 - 10 - 15 - 20 - 25 - 30 - 40 - 50 - 60 - 70 - 75 - 80 - 90 - 100 - 125 - 160 - 200 - 250 - 300 - 350 - 400 |
| 100 | 5 - 10 - 15 - 20 - 25 - 30 - 40 - 50 - 60 - 70 - 75 - 80 - 90 - 100 - 125 - 160 - 200 - 250 - 300 - 350 - 400 |
| 125 | 5 - 10 - 15 - 20 - 25 - 30 - 40 - 50 - 60 - 70 - 75 - 80 - 90 - 100 - 125 - 160 - 200 - 250 - 300 - 350 - 400 |

DOPPIO EFFETTO MAGNETICO STELO PASSANTE

DOUBLE ACTING MAGNETIC WITH DOUBLE ROD

SERIE
P



DOPPIO EFFETTO MAGNETICO STELO PASSANTE
DOUBLE ACTING MAGNETIC WITH DOUBLE ROD

| DIMENSIONI - DIMENSIONS | | | | | | | | | |
|--------------------------------|------------|------------|------------|------------|------------|------------|------------|------------|------------|
| Ø | 020 | 025 | 032 | 040 | 050 | 063 | 080 | 100 | 125 |
| A | 16 | 16 | 19 | 19 | 22 | 22 | 28 | 28 | 40 |
| AF | 15 | 15 | 15 | 15 | 17 | 17 | 20 | 22 | 25 |
| B2 | 5 | 5 | 6 | 6 | 7 | 7 | 8 | 8 | 9 |
| Ø D | 10 | 10 | 12 | 12 | 16 | 16 | 20 | 25 | 25 |
| Ø D5 | 7,5 | 7,5 | 9 | 9 | 10,5 | 10,5 | 13,5 | 13,5 | - |
| E | 36 | 40 | 49 | 54,5 | 65,5 | 77 | 95,5 | 113,5 | 135 |
| EE | M5 | M5 | G1/8 | G1/8 | G1/8 | G1/8 | G1/8 | G1/8 | G1/4 |
| I9 | - | - | 10,8 | 12,8 | 21 | 25,8 | 30 | 50 | 50 |
| I10 | - | - | - | - | - | 13 | 18 | 35 | 50 |
| K | 8 | 8 | 10 | 10 | 13 | 13 | 17 | 22 | 22 |
| KF | M6 | M6 | M8 | M8 | M10 | M10 | M12 | M12 | M16 |
| KK | M8 | M8 | M10x1,25 | M10x1,25 | M12x1,25 | M12x1,25 | M16x1,5 | M16x1,5 | M20x1,5 |
| LA | 4,5 | 4,5 | 5 | 5 | 5 | 5 | 3 | 3 | - |
| PL | 7,5 | 7,5 | 7,5 | 8 | 8 | 7,5 | 8 | 10,5 | 10,5 |
| RT | M5 | M5 | M6 | M6 | M8 | M8 | M10 | M10 | M12 |
| SW2 | 13 | 13 | 17 | 17 | 19 | 19 | 24 | 24 | 30 |
| TG | 22 | 26 | 32,5 | 38 | 46,5 | 56,5 | 72 | 89 | 110 |
| WH | 6,5 | 6 | 6,5 | 7 | 8 | 8 | 9 | 10 | 11 |
| WH+ | 6,5 | 6 | 6,5 | 7 | 8 | 8 | 9 | 10 | 11 |
| ZA+ | 37 | 39 | 44 | 45 | 45 | 49 | 54 | 67 | 81 |
| ZB+ | 43,5 | 45 | 50,5 | 52 | 53 | 57 | 63 | 77 | 92 |

+ = aggiungere lunghezza corsa (mm) - add stroke length (mm)

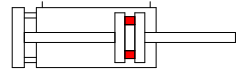
 Note: dado stelo compreso nella fornitura
 Note: rod nut included in the supply

| OPZIONE V (FEMMINA) - Z (MASCHIO) - OPTION V (FEMALE) - Z (MALE) | | | | | | | | | |
|---|------------|------------|------------|------------|------------|------------|------------|------------|--|
| Ø | 020 | 025 | 032 | 040 | 050 | 063 | 080 | 100 | |
| A | 16 | 22 | 22 | 24 | 32 | 32 | 40 | 40 | |
| AF | 11 | 15 | 15 | 15 | 16 | 16 | 17 | 20 | |
| Ø D | 10 | 10 | 12 | 16 | 20 | 20 | 25 | 25 | |
| K | 8 | 8 | 10 | 13 | 17 | 17 | 22 | 22 | |
| KF | M5 | M6 | M6 | M6 | M8 | M8 | M10 | M12 | |
| KK | M8 | M10x1,25 | M10x1,25 | M12x1,25 | M16x1,5 | M16x1,5 | M20x1,5 | M20x1,5 | |

| Ø CORSE STANDARD - STANDARD STROKES | | | | | | | | | |
|--|---|--|--|--|--|--|--|--|--|
| 020 | 5 - 10 - 15 - 20 - 25 - 30 - 40 - 50 - 60 - 70 - 75 - 80 - 90 - 100 - 125 - 160 - 200 - 250 | | | | | | | | |
| 025 | 5 - 10 - 15 - 20 - 25 - 30 - 40 - 50 - 60 - 70 - 75 - 80 - 90 - 100 - 125 - 160 - 200 - 250 | | | | | | | | |
| 032 | 5 - 10 - 15 - 20 - 25 - 30 - 40 - 50 - 60 - 70 - 75 - 80 - 90 - 100 - 125 - 160 - 200 - 250 - 300 - 350 - 400 | | | | | | | | |
| 040 | 5 - 10 - 15 - 20 - 25 - 30 - 40 - 50 - 60 - 70 - 75 - 80 - 90 - 100 - 125 - 160 - 200 - 250 - 300 - 350 - 400 | | | | | | | | |
| 050 | 5 - 10 - 15 - 20 - 25 - 30 - 40 - 50 - 60 - 70 - 75 - 80 - 90 - 100 - 125 - 160 - 200 - 250 - 300 - 350 - 400 | | | | | | | | |
| 063 | 5 - 10 - 15 - 20 - 25 - 30 - 40 - 50 - 60 - 70 - 75 - 80 - 90 - 100 - 125 - 160 - 200 - 250 - 300 - 350 - 400 | | | | | | | | |
| 080 | 5 - 10 - 15 - 20 - 25 - 30 - 40 - 50 - 60 - 70 - 75 - 80 - 90 - 100 - 125 - 160 - 200 - 250 - 300 - 350 - 400 | | | | | | | | |
| 100 | 5 - 10 - 15 - 20 - 25 - 30 - 40 - 50 - 60 - 70 - 75 - 80 - 90 - 100 - 125 - 160 - 200 - 250 - 300 - 350 - 400 | | | | | | | | |
| 125 | 5 - 10 - 15 - 20 - 25 - 30 - 40 - 50 - 60 - 70 - 75 - 80 - 90 - 100 - 125 - 160 - 200 - 250 - 300 - 350 - 400 | | | | | | | | |

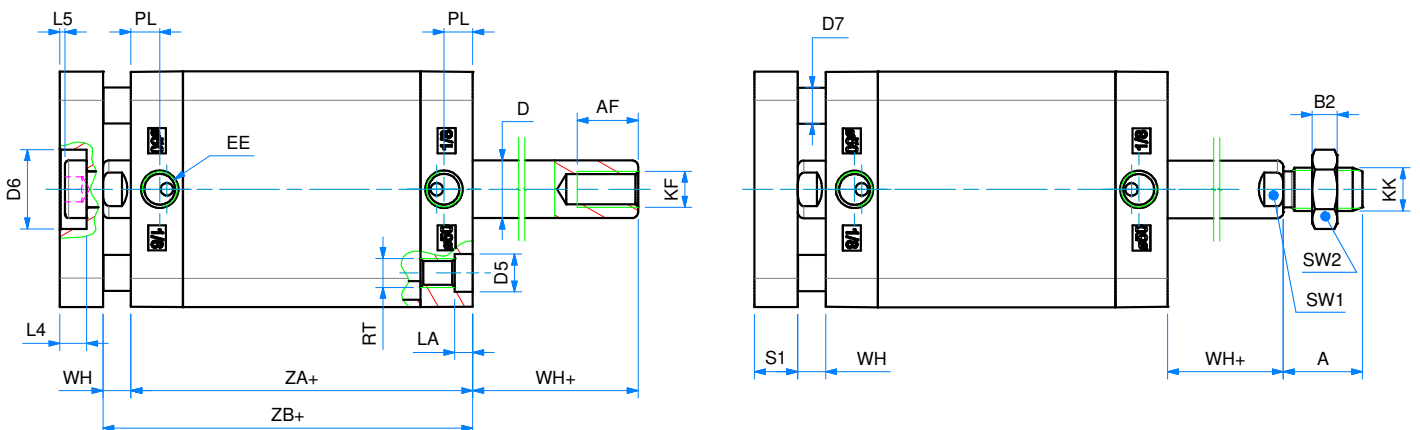
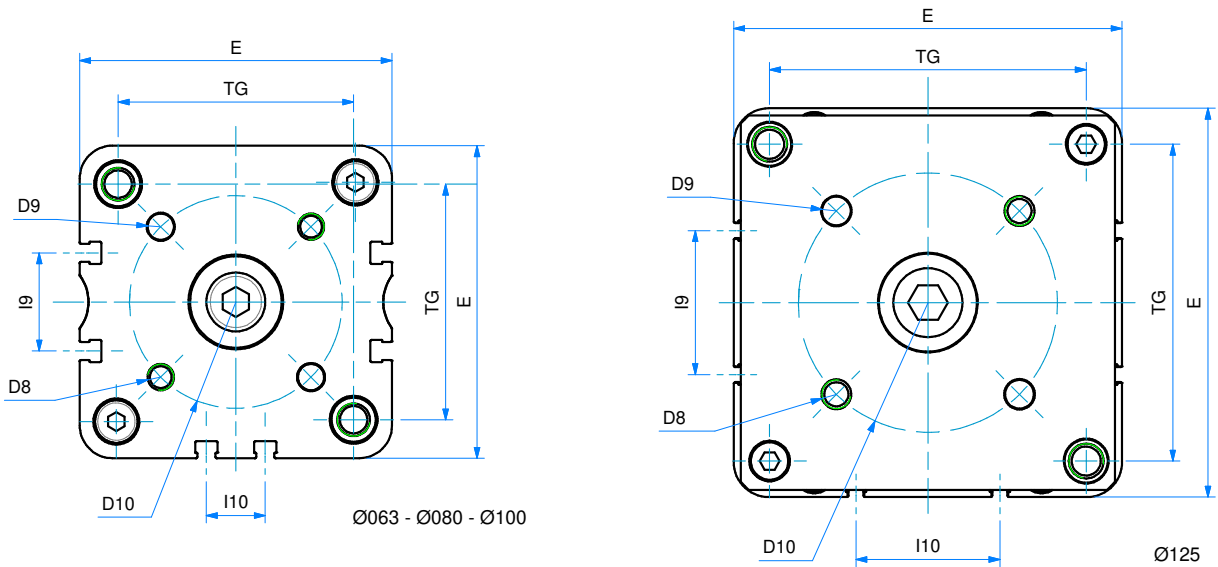
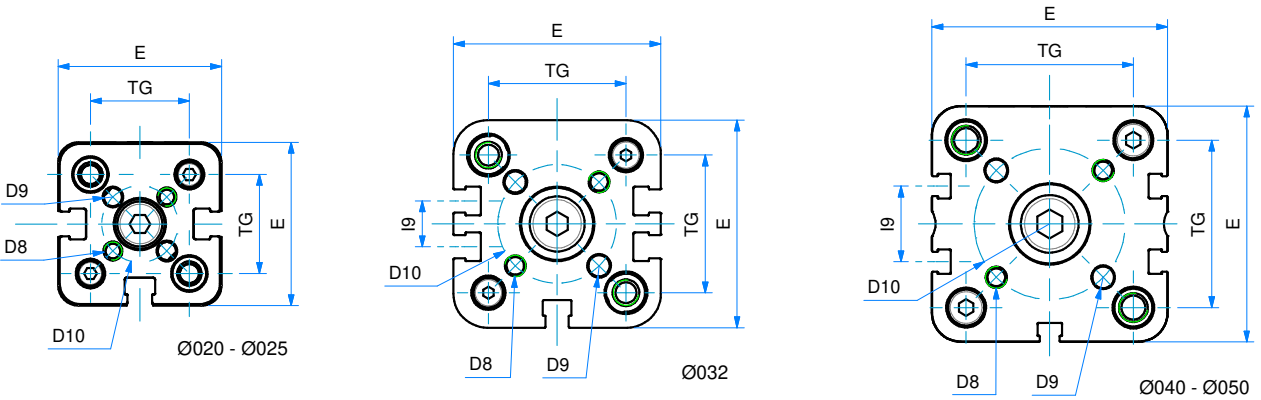
DOPPIO EFFETTO MAGNETICO STELO PASSANTE ANTIROTAZIONE

DOUBLE ACTING MAGNETIC ANTI-ROTATION WITH DOUBLE ROD



SERIE

P



DOPPIO EFFETTO MAGNETICO STELO PASSANTE ANTIROTAZIONE
DOUBLE ACTING MAGNETIC ANTI-ROTATION WITH DOUBLE ROD

| W DIMENSIONI - DIMENSIONS | | | | | | | | | |
|----------------------------------|------------|------------|------------|------------|------------|------------|------------|------------|------------|
| Ø | 020 | 025 | 032 | 040 | 050 | 063 | 080 | 100 | 125 |
| A | 16 | 16 | 19 | 19 | 22 | 22 | 28 | 28 | 40 |
| AF | 15 | 15 | 15 | 15 | 17 | 17 | 20 | 22 | 25 |
| B2 | 5 | 5 | 6 | 6 | 7 | 7 | 8 | 8 | 9 |
| Ø D | 10 | 10 | 12 | 12 | 16 | 16 | 20 | 25 | 25 |
| Ø D5 | 7,5 | 7,5 | 9 | 9 | 10,5 | 10,5 | 13,5 | 13,5 | 13,5 |
| Ø D6 | 11 | 14 | 17 | 17 | 22 | 22 | 28 | 30 | 34 |
| Ø D7 | 5 | 6 | 6 | 8 | 10 | 10 | 14 | 14 | 14 |
| D8 | M4 | M5 | M5 | M5 | M6 | M6 | M8 | M10 | M10 |
| Ø D9 | 4 | 5 | 5 | 5 | 6 | 6 | 8 | 10 | 10 |
| Ø D10 | 17 | 22 | 28 | 33 | 42 | 50 | 65 | 80 | 90 |
| E | 36 | 40 | 49 | 54,5 | 65,5 | 77,0 | 95,5 | 113,5 | 135 |
| EE | M5 | M5 | G1/8 | G1/8 | G1/8 | G1/8 | G1/8 | G1/8 | G1/4 |
| I9 | - | - | 10,8 | 12,8 | 21 | 25,8 | 30 | 50 | 50 |
| I10 | - | - | - | - | - | 13 | 18 | 35 | 50 |
| K | 8 | 8 | 10 | 10 | 13 | 13 | 17 | 22 | 22 |
| KF | M6 | M6 | M8 | M8 | M10 | M10 | M12 | M12 | M16 |
| KK | M8 | M8 | M10x1,25 | M10x1,25 | M12x1,25 | M12x1,25 | M16x1,5 | M16x1,5 | M20x1,5 |
| LA | 4,5 | 4,5 | 5 | 5 | 5 | 5 | 3 | 3 | - |
| L4 | 5 | 5 | 6,5 | 6,5 | 7,5 | 7,5 | 9 | 10 | 11,2 |
| L5 | 1 | 1 | 1,5 | 1,5 | 1,5 | 1,5 | 2 | 3 | 2,2 |
| PL | 7,5 | 7,5 | 7,5 | 8 | 8 | 7,5 | 8 | 10,5 | 10,5 |
| RT | M5 | M5 | M6 | M6 | M8 | M8 | M10 | M10 | M12 |
| S1 | 8 | 8 | 10 | 10 | 12 | 12 | 14 | 14 | 18 |
| SW2 | 13 | 13 | 17 | 17 | 19 | 19 | 24 | 24 | 30 |
| TG | 22 | 26 | 32,5 | 38 | 46,5 | 56,5 | 72 | 89 | 110 |
| WH | 6,5 | 6 | 6,5 | 7 | 8 | 8 | 9 | 10 | 11 |
| WH+ | 6,5 | 6 | 6,5 | 7 | 8 | 8 | 9 | 10 | 11 |
| ZA+ | 37 | 39 | 44 | 45 | 45 | 49 | 54 | 67 | 81 |
| ZB+ | 43,5 | 45 | 50,5 | 52 | 53 | 57 | 63 | 77 | 92 |

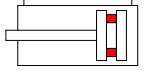
+ = aggiungere lunghezza corsa (mm) - add stroke length (mm)

 Note: dado stelo compreso nella fornitura
 Note: rod nut included in the supply

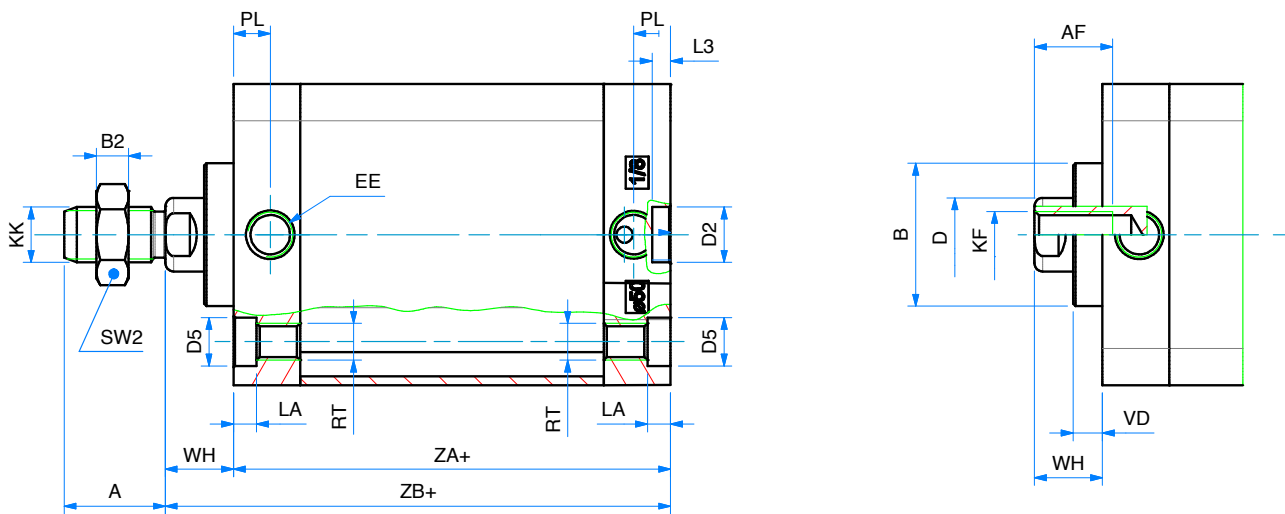
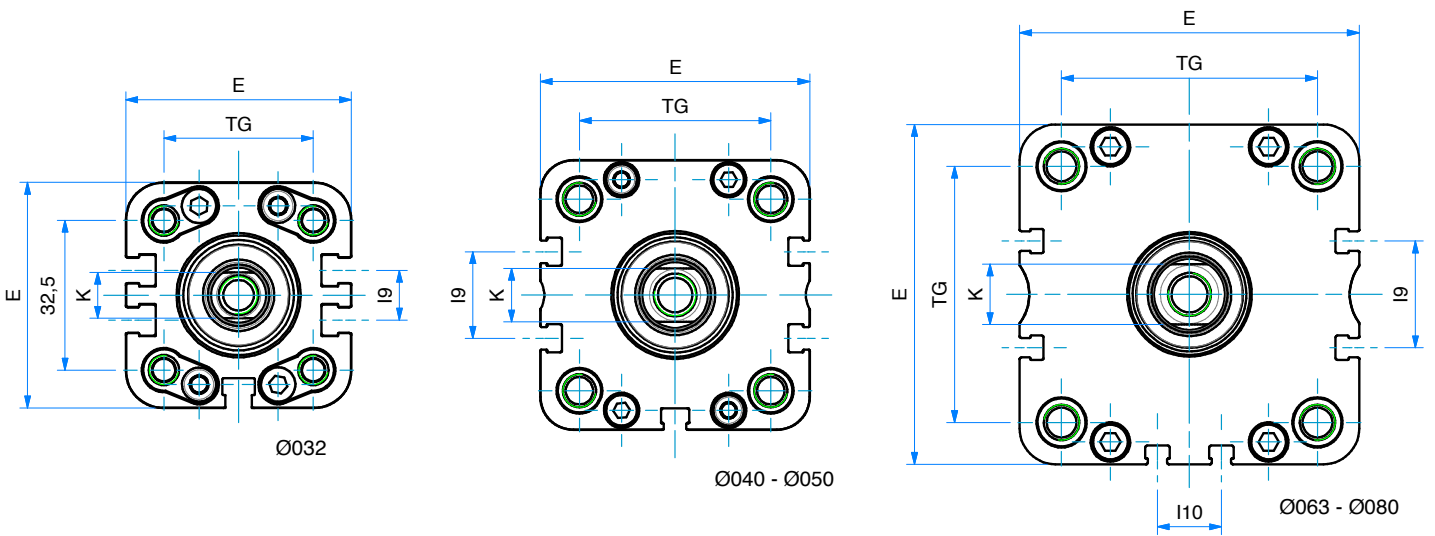
| Ø | CORSE STANDARD - STANDARD STROKES |
|------------|---|
| 020 | 5 - 10 - 15 - 20 - 25 - 30 - 40 - 50 - 60 - 70 - 75 - 80 - 90 - 100 - 125 - 160 - 200 |
| 025 | 5 - 10 - 15 - 20 - 25 - 30 - 40 - 50 - 60 - 70 - 75 - 80 - 90 - 100 - 125 - 160 - 200 |
| 032 | 5 - 10 - 15 - 20 - 25 - 30 - 40 - 50 - 60 - 70 - 75 - 80 - 90 - 100 - 125 - 160 - 200 - 250 - 300 - 350 - 400 |
| 040 | 5 - 10 - 15 - 20 - 25 - 30 - 40 - 50 - 60 - 70 - 75 - 80 - 90 - 100 - 125 - 160 - 200 - 250 - 300 - 350 - 400 |
| 050 | 5 - 10 - 15 - 20 - 25 - 30 - 40 - 50 - 60 - 70 - 75 - 80 - 90 - 100 - 125 - 160 - 200 - 250 - 300 - 350 - 400 |
| 063 | 5 - 10 - 15 - 20 - 25 - 30 - 40 - 50 - 60 - 70 - 75 - 80 - 90 - 100 - 125 - 160 - 200 - 250 - 300 - 350 - 400 |
| 080 | 5 - 10 - 15 - 20 - 25 - 30 - 40 - 50 - 60 - 70 - 75 - 80 - 90 - 100 - 125 - 160 - 200 - 250 - 300 - 350 - 400 |
| 100 | 5 - 10 - 15 - 20 - 25 - 30 - 40 - 50 - 60 - 70 - 75 - 80 - 90 - 100 - 125 - 160 - 200 - 250 - 300 - 350 - 400 |
| 125 | 5 - 10 - 15 - 20 - 25 - 30 - 40 - 50 - 60 - 70 - 75 - 80 - 90 - 100 - 125 - 160 - 200 - 250 - 300 - 350 - 400 |

DOPPIO EFFETTO MAGNETICO

DOUBLE ACTING MAGNETIC



SERIE
P



DOPPIO EFFETTO MAGNETICO
PDM-PS/ES/WS
DOUBLE ACTING MAGNETIC

| DIMENSIONI - DIMENSIONS | | | | | |
|--------------------------------|------------|------------|------------|------------|------------|
| Ø | 032 | 040 | 050 | 063 | 080 |
| A | 19 | 19 | 22 | 22 | 28 |
| AF | 15 | 15 | 17 | 17 | 20 |
| Ø B | 27 | 27 | 31 | 31 | 35 |
| B2 | 6 | 6 | 7 | 7 | 8 |
| Ø D | 12 | 12 | 16 | 16 | 20 |
| Ø D2 | 9 | 9 | 12 | 12 | 12 |
| Ø D5 | 9 | 9 | 10,5 | 10,5 | 13,5 |
| E | 49 | 54,5 | 65,5 | 77 | 95,5 |
| EE | G1/8 | G1/8 | G1/8 | G1/8 | G1/8 |
| I9 | 10,8 | 12,8 | 21 | 25,8 | 30 |
| I10 | - | - | - | 13 | 18 |
| K | 10 | 10 | 13 | 13 | 17 |
| KF | M8 | M8 | M10 | M10 | M12 |
| KK | M10x1,25 | M10x1,25 | M12x1,25 | M12x1,25 | M16x1,5 |
| LA | 5 | 5 | 5,5 | 5 | 3 |
| L3 | 3 | 3 | 4 | 4 | 4 |
| PL | 7,5 | 8 | 8 | 7,5 | 8 |
| RT | M6 | M6 | M8 | M8 | M10 |
| SW2 | 17 | 17 | 19 | 19 | 24 |
| TG | 32,5 | 38 | 46,5 | 56,5 | 72 |
| VD | 6,4 | 6,4 | 6,4 | 6,4 | 6,4 |
| WH | 12,5 | 12,5 | 14,8 | 14,6 | 15,4 |
| ZA+ | 44 | 45 | 45 | 49 | 54 |
| ZB+ | 56,5 | 57,5 | 59,7 | 63,6 | 69,4 |

+ = aggiungere lunghezza corsa (mm) - add stroke length (mm)

 Note: dado stelo compreso nella fornitura
 Note: rod nut included in the supply

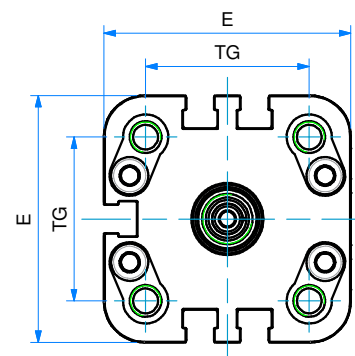
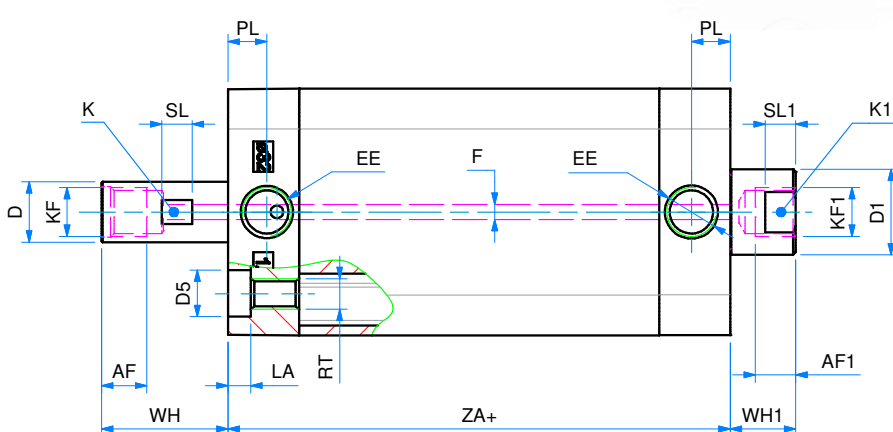
| Ø | CORSE STANDARD - STANDARD STROKES |
|------------|---|
| 032 | 5 - 10 - 15 - 20 - 25 - 30 - 40 - 50 - 60 - 70 - 75 - 80 - 90 - 100 - 125 - 160 - 200 - 250 - 300 - 350 - 400 |
| 040 | 5 - 10 - 15 - 20 - 25 - 30 - 40 - 50 - 60 - 70 - 75 - 80 - 90 - 100 - 125 - 160 - 200 - 250 - 300 - 350 - 400 |
| 050 | 5 - 10 - 15 - 20 - 25 - 30 - 40 - 50 - 60 - 70 - 75 - 80 - 90 - 100 - 125 - 160 - 200 - 250 - 300 - 350 - 400 |
| 063 | 5 - 10 - 15 - 20 - 25 - 30 - 40 - 50 - 60 - 70 - 75 - 80 - 90 - 100 - 125 - 160 - 200 - 250 - 300 - 350 - 400 |
| 080 | 5 - 10 - 15 - 20 - 25 - 30 - 40 - 50 - 60 - 70 - 75 - 80 - 90 - 100 - 125 - 160 - 200 - 250 - 300 - 350 - 400 |

DOPPIO EFFETTO MAGNETICO CON STELO FORATO

DOUBLE ACTING MAGNETIC WITH HOLLOW ROD



SERIE
P



Note: stelo in acciaio inox 304 cromato

Note: chromed AISI 304 stainless steel rod

| DIMENSIONI - DIMENSIONS | |
|-------------------------|--------|
| ∅ | 32 |
| AF | 9 |
| AF1 | 7,5 |
| ∅D | 12 |
| ∅D1 | 17 |
| ∅D5 | 9 |
| E | 49 |
| EE | G 1/8" |
| ∅F | 3 |
| K | 11 |
| K1 | 15 |
| KF | G 1/8" |
| KF1 | G 1/8" |
| LA | 5 |
| PL | 7,5 |
| RT | M6 |
| SL | 6 |
| SL1 | 6 |
| TG | 32,5 |
| WH | 25 |
| WH1 | 13 |
| ZA+ | 50 |

| ∅ | CORSE STANDARD - STANDARD STROKES |
|-----|--|
| 032 | 50 - 100 - 150 - 200 - 250 - 300 - 350 |

+ = aggiungere lunghezza corsa (mm) - add stroke length (mm)

CILINDRI TANDEM - TANDEM CYLINDERS

CHIAVE DI CODIFICA - KEY CODE

P T2 M 0 6 3 . 1 0 0 . G S . M

SERIE
P

VERSIONE - VERSION

- T2** tandem doppia spinta
double thrust tandem
- T3** tandem tripla spinta
3 x force
- T4** tandem quadrupla spinta
4 x force

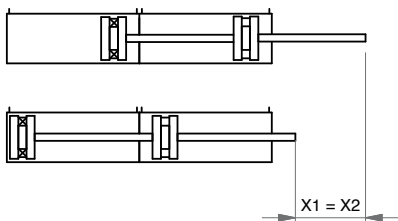
OPZIONE - OPTION

EX ATEX II 2GD cT4

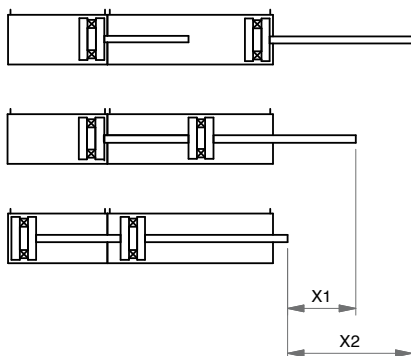
P P M 0 5 0 . 0 3 0 . 0 8 0 . G S . F

| | | | |
|--|--|--|---|
| ALESAGGIO BORE (Ø) 020 - 025 - 032 - 040 050 - 063 - 080 - 100 - 125 | I° CORSA (mm) I° STROKE (mm) vedere tabelle corse std <i>see std stroke tables</i> | II° CORSA (mm) II° STROKE (mm) vedere tabelle corse std <i>see std stroke tables</i> | OPZIONE - OPTION |
| | | | EX ATEX II 2GD cT4 |
| VERSIONE - VERSION M magnetico - <i>magnetic</i> non magnetico - <i>non-magnetic</i> | | | STELO - ROD F femmina <i>female</i> M maschio <i>male</i> |
| VERSIONE - VERSION P tandem più posizioni <i>multi position tandem</i> C tandem contrapposti posteriori <i>rear opposed tandem</i> F tandem contrapposti anteriori <i>front opposed tandem</i> | | | GUARNIZIONI - SEALS GS guarnizioni standard <i>standard seals</i> VR guarnizione stelo per alte temperature <i>high temperature rod seal</i> VA tutte le guarnizioni per alte temperature <i>all seals for high temperature</i> PS guarnizione stelo EU P5600 <i>EU P5600 rod seal</i> ES guarnizione stelo E8 <i>E8 rod seal</i> WS guarnizione stelo EW (raschiatore metallico) <i>EW rod seal (metal scraper)</i> |
| SERIE - SERIES P tubo profilato con cave per sensori <i>tube with slots for sensors</i> | | | ø32 - 80 ø50 - 80 |

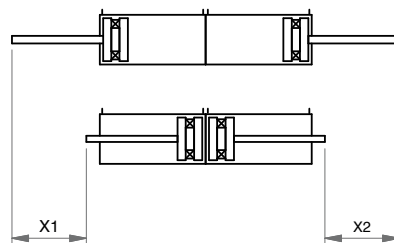
DOPPIA SPINTA - DOUBLE THRUST



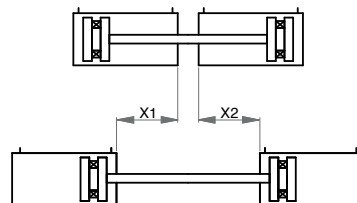
PIÙ POSIZIONI - MULTI-POSITIONS



CONTRAPPOSTI POSTERIORI - REAR OPPOSED



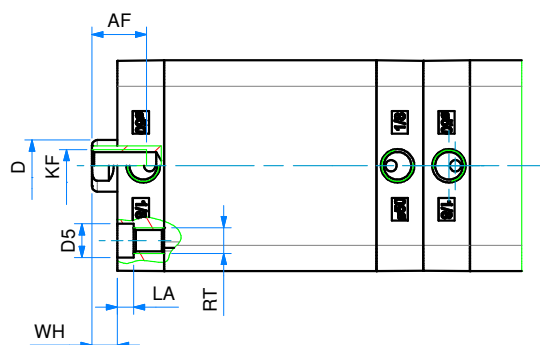
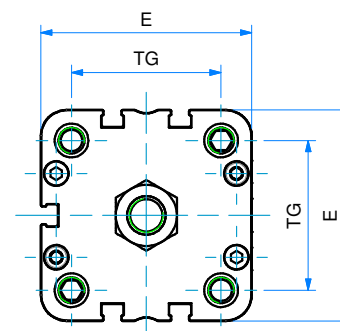
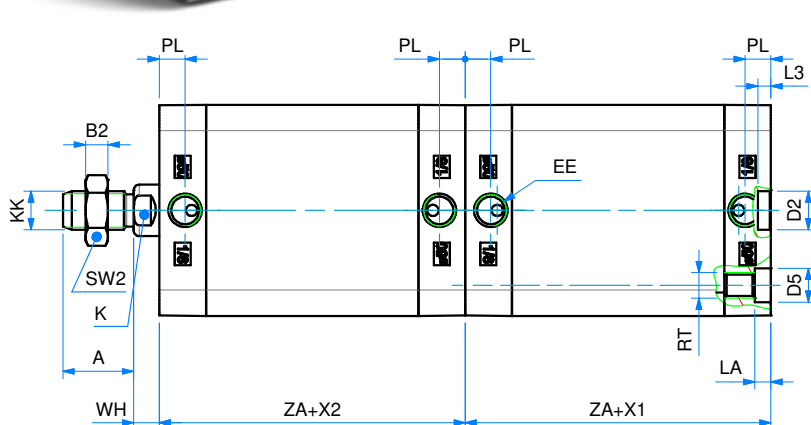
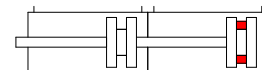
CONTRAPPOSTI ANTERIORI - FRONT OPPOSED



X1= 1° corsa - 1° stroke
X2= 2° corsa - 2° stroke

TANDEM DOPPIA SPINTA D.E.M.
DOUBLE THRUST TANDEM D.A.M.

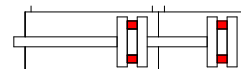
SERIE

P


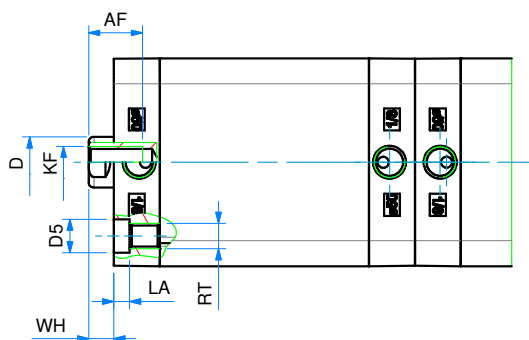
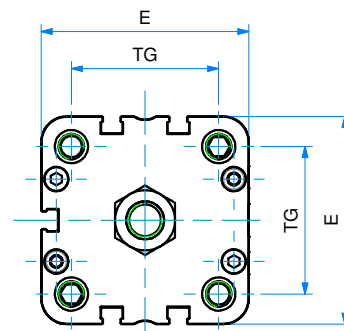
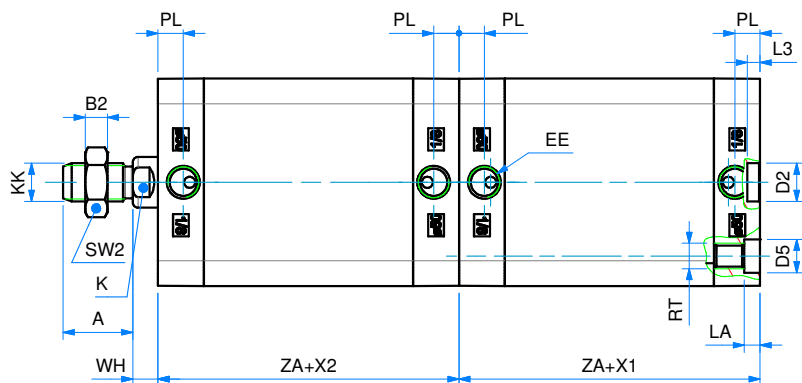
Note: dado stelo compreso nella fornitura
 Note: rod nut included in the supply

DIMENSIONI - DIMENSIONS

| ∅ | 020 | 025 | 032 | 040 | 050 | 063 | 080 | 100 | 125 |
|------|------------------------|-----|----------|----------|----------|----------|---------|---------|----------|
| A | 16 | 16 | 19 | 19 | 22 | 22 | 28 | 28 | 40 |
| AF | 15 | 15 | 15 | 15 | 17 | 17 | 20 | 22 | 25 |
| B2 | 5 | 5 | 6 | 6 | 7 | 7 | 8 | 8 | 9 |
| ∅ D | 10 | 10 | 12 | 12 | 16 | 16 | 20 | 25 | 25 |
| ∅ D2 | 9 | 9 | 9 | 9 | 12 | 12 | 12 | 12 | 12 |
| ∅ D5 | 7,5 | 7,5 | 9 | 9 | 10,5 | 10,5 | 13,5 | 13,5 | - |
| E | 36 | 40 | 49 | 54,5 | 65,5 | 77 | 95,5 | 113,5 | 135 |
| EE | M5 | M5 | G1/8 | G1/8 | G1/8 | G1/8 | G1/8 | G1/8 | G1/4 |
| K | 8 | 8 | 10 | 10 | 13 | 13 | 17 | 22 | 22 |
| KF | M6 | M6 | M8 | M8 | M10 | M10 | M12 | M12 | M 16 |
| KK | M8 | M8 | M10x1,25 | M10x1,25 | M12x1,25 | M12x1,25 | M16x1,5 | M16x1,5 | M 20x1,5 |
| L3 | 3 | 3 | 3 | 3 | 4 | 4 | 4 | 4 | 4 |
| LA | 4,5 | 4,5 | 5 | 5 | 6,5 | 5 | 3 | 3 | - |
| PL | 7,5 | 7,5 | 7,5 | 8 | 8 | 7,5 | 8 | 10,5 | 10,5 |
| RT | M5 | M5 | M6 | M6 | M8 | M8 | M10 | M10 | M12 |
| SW2 | 13 | 13 | 17 | 17 | 19 | 19 | 24 | 24 | 30 |
| TG | 22 | 26 | 32,5 | 38 | 46,5 | 56,5 | 72 | 89 | 110 |
| WH | 6,5 | 6 | 6,5 | 7 | 8 | 8 | 9 | 10 | 11 |
| X1 | I° CORSA - I° STROKE | | | | | | | | |
| X2 | II° CORSA - II° STROKE | | | | | | | | |
| ZA | 37 | 39 | 44 | 45 | 45 | 49 | 54 | 67 | 81 |

TANDEM PIÙ POSIZIONI D.E.M.
MULTI-POSITION TANDEM D.A.M.


SERIE

P


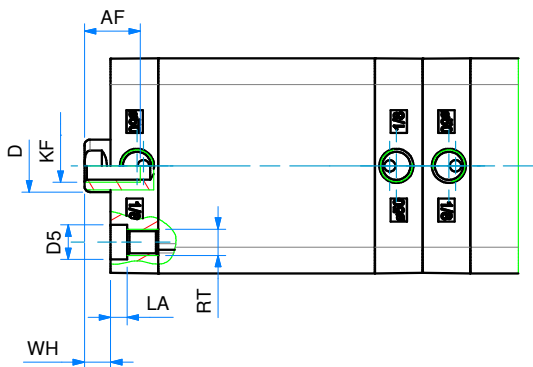
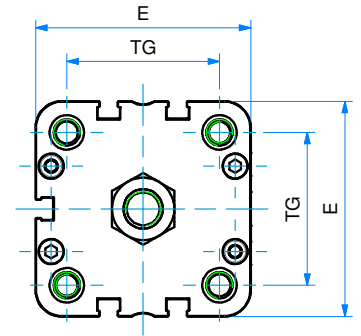
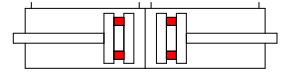
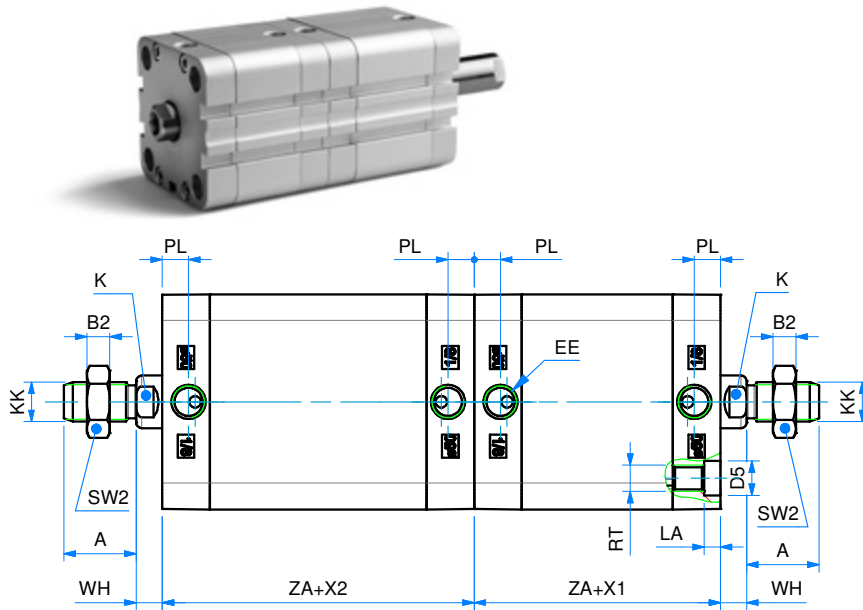
Note: dado stelo compreso nella fornitura
 Note: rod nut included in the supply

DIMENSIONI - DIMENSIONS

| ø | 020 | 025 | 032 | 040 | 050 | 063 | 080 | 100 | 125 |
|------|------------------------|-----|----------|----------|----------|----------|---------|---------|----------|
| A | 16 | 16 | 19 | 19 | 22 | 22 | 28 | 28 | 40 |
| AF | 15 | 15 | 15 | 15 | 17 | 17 | 20 | 22 | 25 |
| B2 | 5 | 5 | 6 | 6 | 7 | 7 | 8 | 8 | 9 |
| ø D | 10 | 10 | 12 | 12 | 16 | 16 | 20 | 25 | 25 |
| ø D2 | 9 | 9 | 9 | 9 | 12 | 12 | 12 | 12 | 12 |
| ø D5 | 7,5 | 7,5 | 9 | 9 | 10,5 | 10,5 | 13,5 | 13,5 | - |
| E | 36 | 40 | 49 | 54,5 | 65,5 | 77 | 95,5 | 113,5 | 135 |
| EE | M5 | M5 | G1/8 | G1/8 | G1/8 | G1/8 | G1/8 | G1/8 | G1/4 |
| K | 8 | 8 | 10 | 10 | 13 | 13 | 17 | 22 | 22 |
| KF | M6 | M6 | M8 | M8 | M10 | M10 | M12 | M12 | M 16 |
| KK | M8 | M8 | M10x1,25 | M10x1,25 | M12x1,25 | M12x1,25 | M16x1,5 | M16x1,5 | M 20x1,5 |
| L3 | 3 | 3 | 3 | 3 | 4 | 4 | 4 | 4 | 4 |
| LA | 4,5 | 4,5 | 5 | 5 | 6,5 | 5 | 3 | 3 | - |
| PL | 7,5 | 7,5 | 7,5 | 8 | 8 | 7,5 | 8 | 10,5 | 10,5 |
| RT | M5 | M5 | M6 | M6 | M8 | M8 | M10 | M10 | M12 |
| SW2 | 13 | 13 | 17 | 17 | 19 | 19 | 24 | 24 | 30 |
| TG | 22 | 26 | 32,5 | 38 | 46,5 | 56,5 | 72 | 89 | 110 |
| WH | 6,5 | 6 | 6,5 | 7 | 8 | 8 | 9 | 10 | 11 |
| X1 | I° CORSA - I° STROKE | | | | | | | | |
| X2 | II° CORSA - II° STROKE | | | | | | | | |
| ZA | 37 | 39 | 44 | 45 | 45 | 49 | 54 | 67 | 81 |

TANDEM CONTRAPPOSTI POSTERIORI D.E.M.
REAR OPPOSED TANDEM D.A.M.

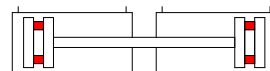
SERIE

P


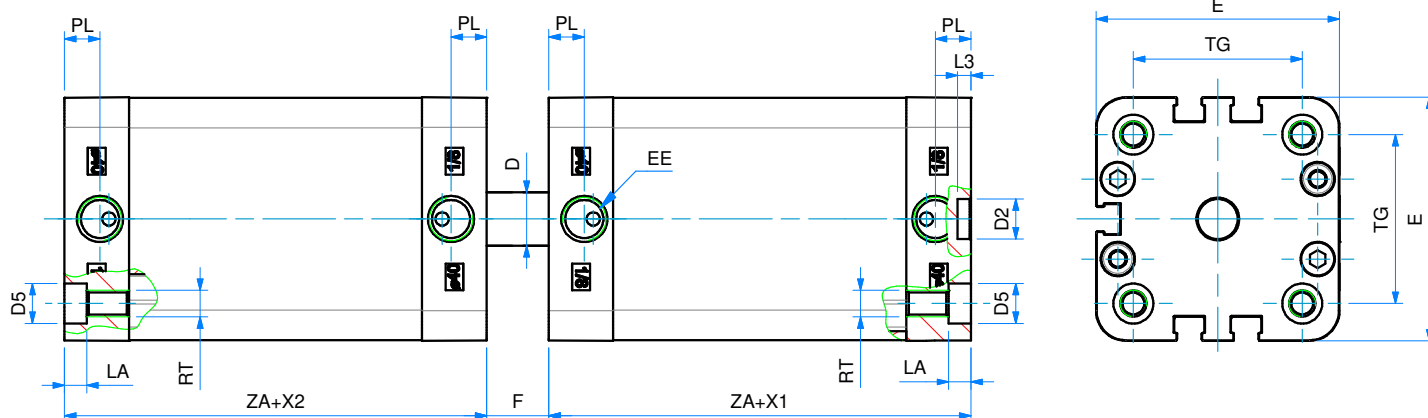
Note: dado stelo compreso nella fornitura
 Note: rod nut included in the supply

DIMENSIONI - DIMENSIONS

| ∅ | 020 | 025 | 032 | 040 | 050 | 063 | 080 | 100 | 125 |
|------|------------------------|-----|----------|----------|----------|----------|---------|---------|----------|
| A | 16 | 16 | 19 | 19 | 22 | 22 | 28 | 28 | 40 |
| AF | 15 | 15 | 15 | 15 | 17 | 17 | 20 | 22 | 25 |
| B2 | 5 | 5 | 6 | 6 | 7 | 7 | 8 | 8 | 9 |
| ∅ D | 10 | 10 | 12 | 12 | 16 | 16 | 20 | 25 | 25 |
| ∅ D2 | 9 | 9 | 9 | 9 | 12 | 12 | 12 | 12 | 12 |
| ∅ D5 | 7,5 | 7,5 | 9 | 9 | 10,5 | 10,5 | 13,5 | 13,5 | - |
| E | 36 | 40 | 49 | 54,5 | 65,5 | 77 | 95,5 | 113,5 | 135 |
| EE | M5 | M5 | G1/8 | G1/8 | G1/8 | G1/8 | G1/8 | G1/8 | G1/4 |
| K | 8 | 8 | 10 | 10 | 13 | 13 | 17 | 22 | 22 |
| KF | M6 | M6 | M8 | M8 | M10 | M10 | M12 | M12 | M 16 |
| KK | M8 | M8 | M10x1,25 | M10x1,25 | M12x1,25 | M12x1,25 | M16x1,5 | M16x1,5 | M 20x1,5 |
| L3 | 3 | 3 | 3 | 3 | 4 | 4 | 4 | 4 | 4 |
| LA | 4,5 | 4,5 | 5 | 5 | 6,5 | 5 | 3 | 3 | - |
| PL | 7,5 | 7,5 | 7,5 | 8 | 8 | 7,5 | 8 | 10,5 | 10,5 |
| RT | M5 | M5 | M6 | M6 | M8 | M8 | M10 | M10 | M12 |
| SW2 | 13 | 13 | 17 | 17 | 19 | 19 | 24 | 24 | 30 |
| TG | 22 | 26 | 32,5 | 38 | 46,5 | 56,5 | 72 | 89 | 110 |
| WH | 6,5 | 6 | 6,5 | 7 | 8 | 8 | 9 | 10 | 11 |
| X1 | I° CORSA - I° STROKE | | | | | | | | |
| X2 | II° CORSA - II° STROKE | | | | | | | | |
| ZA | 37 | 39 | 44 | 45 | 45 | 49 | 54 | 67 | 81 |

TANDEM CONTRAPPOSTI ANTERIORI D.E.M.
FRONT OPPOSED TANDEM D.A.M.


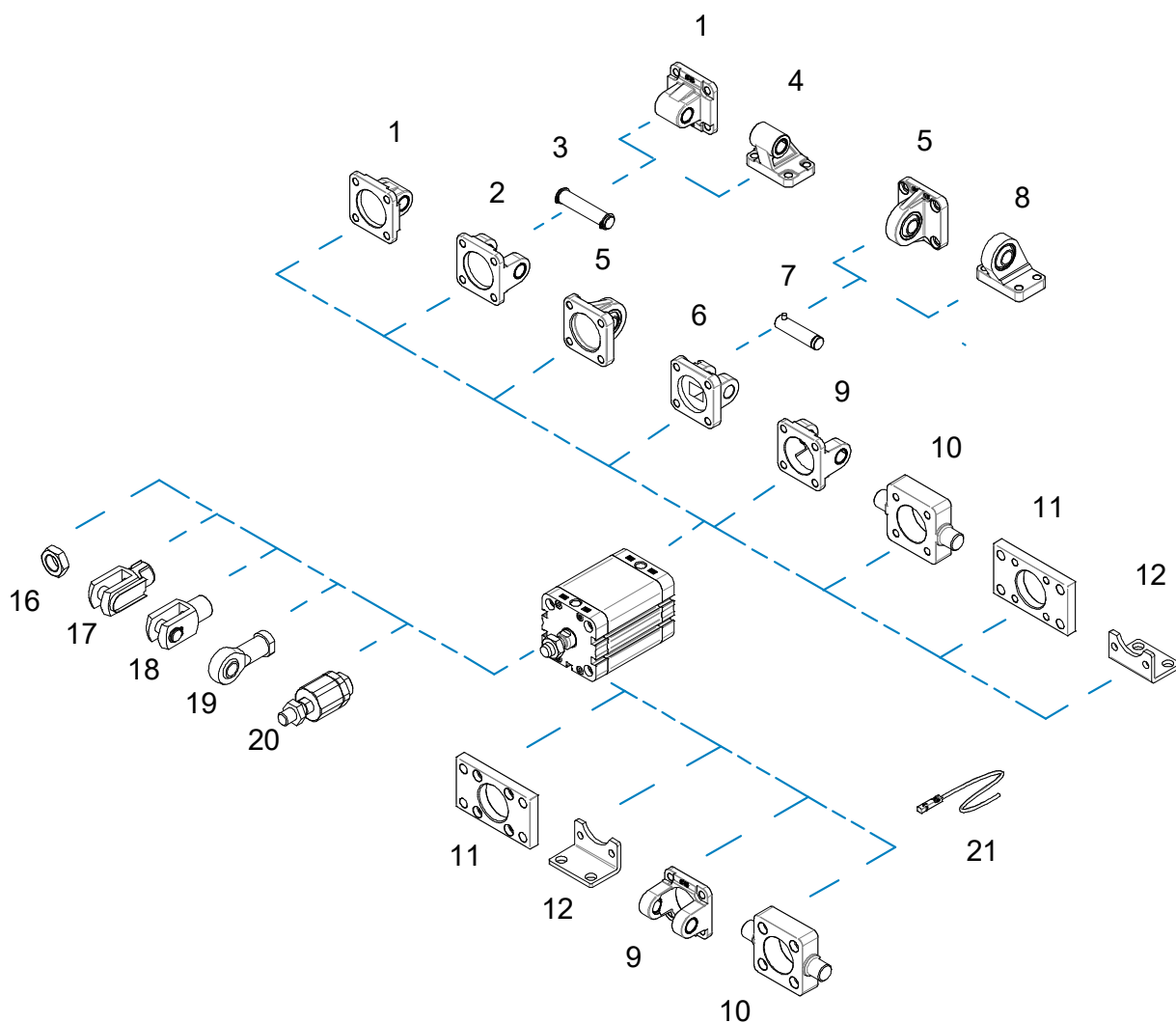
SERIE

P

DIMENSIONI - DIMENSIONS

| ø | 20 | 25 | 32 | 40 | 50 | 63 | 80 | 100 | 125 |
|------|------------------------|-----|------|------|------|------|------|-------|------|
| ø D | 10 | 10 | 12 | 12 | 16 | 16 | 20 | 25 | 25 |
| ø D2 | 9 | 9 | 9 | 9 | 12 | 12 | 12 | 12 | 12 |
| ø D5 | 7,5 | 7,5 | 9 | 9 | 10,5 | 10,5 | 13,5 | 13,5 | - |
| E | 36 | 40 | 49 | 54,5 | 65,5 | 77 | 95,5 | 113,5 | 135 |
| EE | M5 | M5 | G1/8 | G1/8 | G1/8 | G1/8 | G1/8 | G1/8 | G1/4 |
| F | 13 | 12 | 13 | 14 | 16 | 16 | 18 | 20 | 22 |
| L3 | 3 | 3 | 3 | 3 | 4 | 4 | 4 | 4 | 4 |
| LA | 4,5 | 4,5 | 5 | 5 | 5 | 5 | 3 | 3 | - |
| PL | 7,5 | 7,5 | 7,5 | 8 | 8 | 7,5 | 8 | 10,5 | 10,5 |
| RT | M5 | M5 | M6 | M6 | M8 | M8 | M10 | M10 | M12 |
| TG | 22 | 26 | 32,5 | 38 | 46,5 | 56,5 | 72 | 89 | 110 |
| X1 | I° CORSA - I° STROKE | | | | | | | | |
| X2 | II° CORSA - II° STROKE | | | | | | | | |
| ZA | 37 | 39 | 44 | 45 | 45 | 49 | 54 | 67 | 81 |

ACCESSORI DI FISSAGGIO ISO 15552 (UTILIZZABILI ANCHE PER CILINDRI ISO 21287)

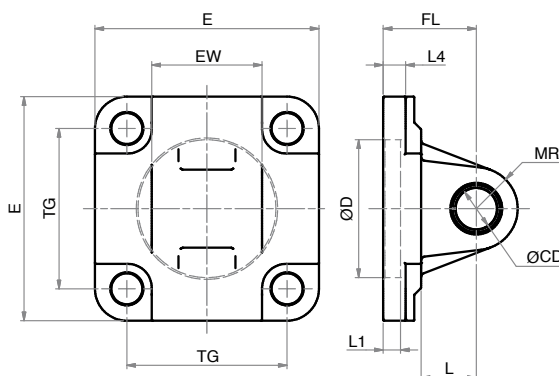
ISO 15552 MOUNTING PARTS (ALSO SUITABLE FOR ISO 21287 CYLINDERS)



| POS. | CODE | DESCRIZIONE-DESCRIPTION |
|------|---------|---|
| 1 | CMI--- | cerniera maschio iso - iso male hinge |
| 2 | CFI--- | cerniera femmina iso - iso female hinge |
| 3 | PCF--- | perno per cerniera - pin for hinge |
| 4 | ASI--- | articolazione a squadra iso - iso square hinge |
| 5 | CMSI--- | cerniera maschio snodata iso iso male hinge with ball joint |
| 6 | CFSI--- | cerniera femmina stretta iso iso narrow female hinge |
| 7 | PCFS--- | perno per cerniera stretta pin for narrow hinge |
| 8 | ASSI--- | articolazione a squadra snodata iso square hinge with ball joint |
| 9 | CFI--F | cerniera femmina forata iso hollow iso female hinge |
| 10 | CIA--- | cerniera anteriore-posteriore lamata front-rear hinge |
| 11 | FI--- | flangia iso - iso flange |
| 12 | PBI--- | piedino basso iso - iso foot mounting |

| POS. | CODE | DESCRIZIONE-DESCRIPTION |
|------|------------|---|
| 16 | DA--x--- | dado - nut |
| 17 | FC--x--- | forcella con clips - clevis with lockable pin |
| 18 | FP--x--- | forcella con perno - clevis with pin |
| 19 | SSFI--x--- | snodo sferico - rod eye |
| 20 | SA--x--- | snodo autoallineante - self-aligning joint |
| 21 | 36.SEN--- | sensore magnetico - magnetic sensor |

Fissaggi forniti con viti - Mounting parts supplied with screws

CERNIERA MASCHIO ISO (MP4)
ISO MALE HINGE (MP4)


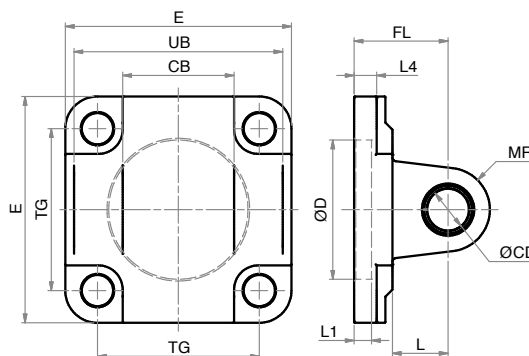
LA FORNITURA COMPRENDE:
 n° 1 CERNIERA MASCHIO
 n° 4 VITI
 THE SUPPLY INCLUDES:
 n° 1 MALE HINGE
 n° 4 SCREWS

MATERIALE:
 CORPO IN ALLUMINIO
 BOCCOLA IN ACCIAIO E PTFE
 MATERIAL:
 BODY IN ALUMINIUM
 BUSH IN STEEL AND PTFE

SERIE

P
DIMENSIONI - DIMENSIONS

| COD. | CMI016 | CMI020 | CMI025 | CMI032 | CMI040 | CMI050 | CMI063 | CMI080 | CMI100 | CMI125 |
|------|--------|--------|--------|--------|--------|--------|--------|--------|--------|--------|
| Ø | 16 | 20 | 25 | 32 | 40 | 50 | 63 | 80 | 100 | 125 |
| EW | 12 | 16 | 16 | 26 | 28 | 32 | 40 | 50 | 60 | 70 |
| E | 27 | 34 | 38 | 45 | 52 | 65 | 75 | 93 | 110 | 134 |
| FL | 16 | 20 | 20 | 22 | 25 | 27 | 32 | 36 | 41 | 50 |
| L1 | - | 3 | 3 | 5 | 5 | 5 | 5 | 5 | 5 | 7 |
| L4 | 3,4 | 2,7 | 2,7 | 5,5 | 5,5 | 6,5 | 6,5 | 10 | 10 | 10 |
| L | 10 | 14 | 14 | 13 | 16 | 16 | 21 | 22 | 27 | 30 |
| MR | 6 | 8 | 8 | 10 | 12 | 12 | 16 | 16 | 20 | 25 |
| Ø CD | 6 | 8 | 8 | 10 | 12 | 12 | 16 | 16 | 20 | 25 |
| Ø D | - | 12 | 12 | 30 | 35 | 40 | 45 | 45 | 55 | 60 |
| TG | 18 | 22 | 26 | 32,5 | 38 | 46,5 | 56,5 | 72 | 89 | 110 |

CERNIERA FEMMINA ISO (MP2)
CFI
CFI-F*
ISO FEMALE HINGE (MP2)


LA FORNITURA COMPRENDE:
 n° 1 CERNIERA FEMMINA
 n° 4 VITI
 THE SUPPLY INCLUDES:
 n° 1 FEMALE HINGE
 n° 4 SCREWS

MATERIALE:
 CORPO IN ALLUMINIO
 BOCCOLA IN ACCIAIO E PTFE
 MATERIAL:
 BODY IN ALUMINIUM
 BUSH IN STEEL AND PTFE

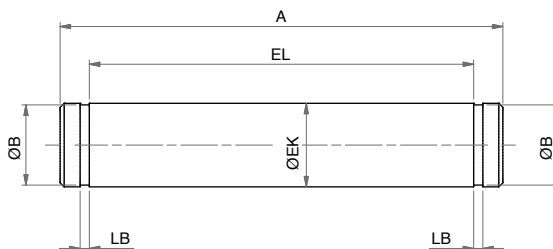
DIMENSIONI - DIMENSIONS

| COD. | CFI032 | CFI040 | CFI050 | CFI063 | CFI080 | CFI100 | CFI125 |
|------|--------|--------|--------|--------|--------|--------|--------|
| Ø | 32 | 40 | 50 | 63 | 80 | 100 | 125 |
| CB | 26 | 28 | 32 | 40 | 50 | 60 | 70 |
| E | 45 | 52 | 65 | 75 | 93 | 110 | 134 |
| FL | 22 | 25 | 27 | 32 | 36 | 41 | 50 |
| L1 | 5 | 5 | 5 | 5 | 5 | 5 | 7 |
| L4 | 5,5 | 5,5 | 6,5 | 6,5 | 10 | 10 | 10 |
| L | 13 | 16 | 16 | 21 | 22 | 27 | 30 |
| MR | 10 | 12 | 12 | 16 | 16 | 20 | 25 |
| Ø CD | 10 | 12 | 12 | 16 | 16 | 20 | 25 |
| Ø D | 30 | 35 | 40 | 45 | 45 | 55 | 60 |
| TG | 32,5 | 38 | 46,5 | 56,5 | 72 | 89 | 110 |
| UB | 45 | 52 | 60 | 70 | 90 | 110 | 130 |

*CFI---F dimensione foro centrale uguale alla quota ØD - *CFI---F dimension of the central hole are the same as ØD

PERNO PER CERNIERA (AA4)
PIN FOR HINGE (AA4)

SERIE

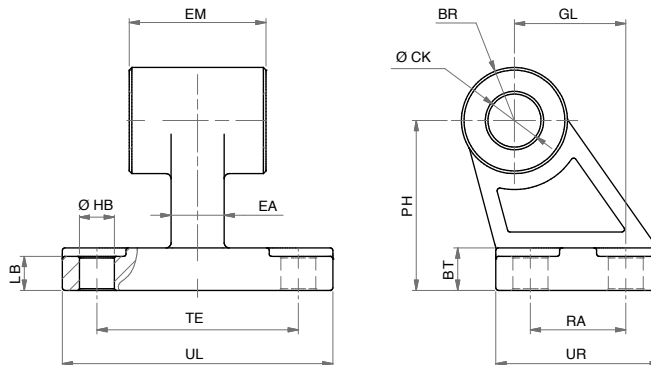
P


LA FORNITURA COMPRENDE:
 n°1 PERNO
 n°2 SEEGER
 THE SUPPLY INCLUDES:
 n°1 PIN
 n°2 RETAINING RING

MATERIALE:
 ACCIAIO ZINCATO
 MATERIAL:
 ZINC COATED STEEL

DIMENSIONI - DIMENSIONS

| COD. | PCF032 | PCF040 | PCF050 | PCF063 | PCF080 | PCF100 | PCF125 |
|------|--------|--------|--------|--------|--------|--------|--------|
| Ø | 32 | 40 | 50 | 63 | 80 | 100 | 125 |
| A | 53 | 60 | 68 | 78 | 98 | 118 | 139 |
| EL | 46 | 53 | 61 | 71 | 91 | 111 | 132 |
| LB | 1,1 | 1,1 | 1,1 | 1,1 | 1,1 | 1,3 | 1,3 |
| Ø B | 9,6 | 11,5 | 11,5 | 15,2 | 15,2 | 19 | 23,9 |
| Ø EK | 10 | 12 | 12 | 16 | 16 | 20 | 25 |

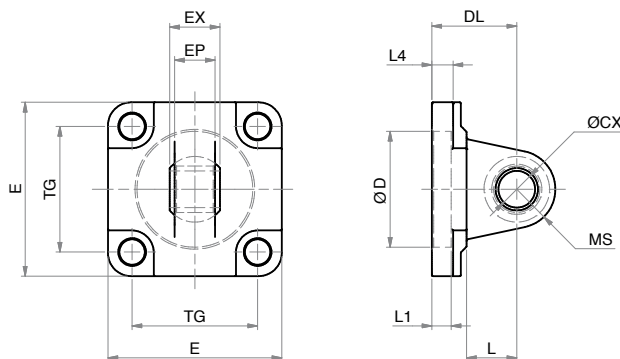
ARTICOLAZIONE A SQUADRA ISO (AB7)
ISO SQUARE HINGE (AB7)


LA FORNITURA COMPRENDE:
 n°1 ARTICOLAZIONE A SQUADRA
 THE SUPPLY INCLUDES:
 n°1 SQUARE HINGE

MATERIALE:
 CORPO IN ALLUMINIO
 BOCCOLA IN ACCIAIO E PTFE
 MATERIAL:
 BODY IN ALUMINIUM
 BUSH IN STEEL AND PTFE

DIMENSIONI - DIMENSIONS

| COD. | ASI032 | ASI040 | ASI050 | ASI063 | ASI080 | ASI100 | ASI125 |
|------|--------|--------|--------|--------|--------|--------|--------|
| Ø | 32 | 40 | 50 | 63 | 80 | 100 | 125 |
| BR | 10 | 11 | 13 | 15 | 15 | 19 | 22,5 |
| BT | 8 | 10 | 12 | 14 | 14 | 17 | 20 |
| Ø CK | 10 | 12 | 12 | 16 | 16 | 20 | 25 |
| EA | 10 | 15 | 16 | 16 | 20 | 20 | 30 |
| EM | 26 | 28 | 32 | 40 | 50 | 60 | 70 |
| GL | 21 | 24 | 33 | 37 | 47 | 55 | 70 |
| LB | 6,4 | 8,4 | 10,4 | 12,4 | 11,5 | 14,5 | 16,8 |
| Ø HB | 6,6 | 6,6 | 9 | 9 | 11 | 11 | 14 |
| PH | 32 | 36 | 45 | 50 | 63 | 71 | 90 |
| RA | 18 | 22 | 30 | 35 | 40 | 50 | 60 |
| TE | 38 | 41 | 50 | 52 | 66 | 76 | 94 |
| UL | 51 | 54 | 65 | 67 | 86 | 96 | 124 |
| UR | 31 | 35 | 45 | 50 | 60 | 70 | 90 |

CERNIERA MASCHIO SNODATA ISO (MP6)
ISO MALE HINGE WITH BALL JOINT (MP6)


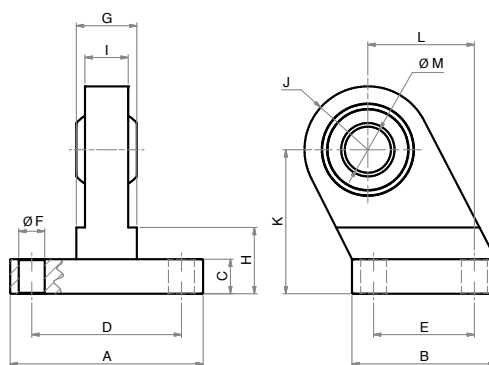
LA FORNITURA COMPRENDE:
 n° 1 CERNIERA MASCHIO
 n° 4 VITI
 THE SUPPLY INCLUDES:
 n° 1 MALE HINGE
 n° 4 SCREWS

MATERIALE:
 CORPO IN ALLUMINIO
 SNODO IN ACCIAIO,
 BRONZO E PTFE
 MATERIAL:
 BODY IN ALUMINIUM
 EYE IN STEEL, BRONZE AND PTFE

SERIE

P
DIMENSIONI - DIMENSIONS

| COD. | CMSI032 | CMSI040 | CMSI050 | CMSI063 | CMSI080 | CMSI100 | CMSI125 |
|------|---------|---------|---------|---------|---------|---------|---------|
| Ø | 32 | 40 | 50 | 63 | 80 | 100 | 125 |
| DL | 22 | 25 | 27 | 32 | 36 | 41 | 50 |
| EP | 10,5 | 12 | 15 | 15 | 18 | 18 | 25 |
| EX | 14 | 16 | 21 | 21 | 25 | 25 | 37 |
| E | 45 | 52 | 65 | 75 | 95 | 115 | 140 |
| L1 | 7 | 7 | 7 | 7 | 9 | 9 | 9 |
| L4 | 5,5 | 5,5 | 6,5 | 6,5 | 10 | 10 | 10 |
| L | 12 | 15 | 15 | 20 | 20 | 25 | 30 |
| MS | 16 | 18 | 21 | 23 | 28 | 30 | 40 |
| ØCX | 10 | 12 | 16 | 16 | 20 | 20 | 30 |
| ØD | 30 | 35 | 40 | 45 | 45 | 55 | 60 |
| TG | 32,5 | 38 | 46,5 | 56,5 | 72 | 89 | 110 |

ARTICOLAZIONE A SQUADRA SNODATA
ISO SQUARE HINGE WITH BALL JOINT


LA FORNITURA COMPRENDE:
 n° 1 ARTICOLAZIONE A SQUADRA
 THE SUPPLY INCLUDES:
 n° 1 SQUARE HINGE

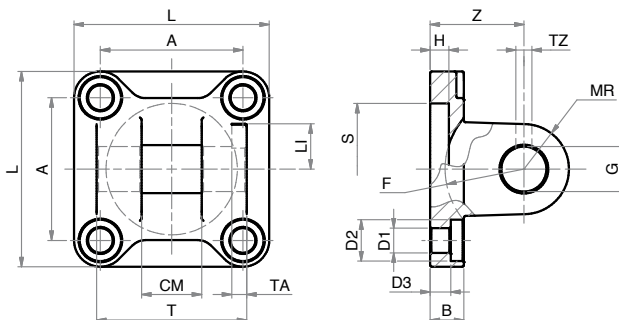
MATERIALE:
 CORPO IN ALLUMINIO
 SNODO IN ACCIAIO,
 BRONZO E PTFE
 MATERIAL:
 BODY IN ALUMINIUM
 EYE IN STEEL, BRONZE AND PTFE

DIMENSIONI - DIMENSIONS

| COD. | ASSI032 | ASSI040 | ASSI050 | ASSI063 | ASSI080 | ASSI100 |
|------|---------|---------|---------|---------|---------|---------|
| Ø | 32 | 40 | 50 | 63 | 80 | 100 |
| A | 51 | 54 | 65 | 67 | 86 | 96 |
| B | 31 | 35 | 45 | 50 | 60 | 70 |
| C | 10 | 10 | 12 | 12 | 14 | 15 |
| D | 38 | 41 | 50 | 52 | 66 | 76 |
| E | 18 | 22 | 30 | 35 | 40 | 50 |
| G | 14 | 16 | 21 | 21 | 25 | 25 |
| H | 16 | 16 | 21 | 23 | 32 | 33 |
| I | 10,5 | 12 | 15 | 15 | 18 | 18 |
| J | 15 | 17 | 20 | 22 | 27 | 29 |
| K | 32 | 36 | 45 | 50 | 63 | 71 |
| L | 21 | 24 | 33 | 37 | 47 | 55 |
| ØF | 6,6 | 6,6 | 9 | 9 | 11 | 11 |
| ØM | 10 | 12 | 16 | 16 | 20 | 20 |

CERNIERA FEMMINA STRETTA ISO (AB6)
ISO NARROW FEMALE HINGE (AB6)

SERIE

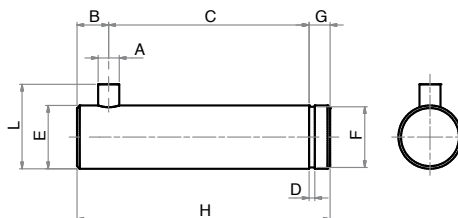
P


LA FORNITURA COMPRENDE:
 n° 1 CERNIERA FEMMINA
 n° 4 VITI
 THE SUPPLY INCLUDES:
 n° 1 FEMALE HINGE
 n° 4 SCREWS

MATERIALE: ALLUMINO
 MATERIAL: ALUMINIUM

DIMENSIONI - DIMENSIONS

| COD. | CFSI032 | CFSI040 | CFSI050 | CFSI063 | CFSI080 | CFSI100 | CFSI125 |
|--------|---------|---------|---------|---------|---------|---------|---------|
| ϕ | 32 | 40 | 50 | 63 | 80 | 100 | 125 |
| A | 32,5 | 38 | 46,5 | 56,5 | 72 | 89 | 110 |
| B | 9 | 9 | 11 | 11 | 14 | 14 | 20 |
| CM | 14 | 16 | 21 | 21 | 25 | 25 | 37 |
| D1 | 6,6 | 6,6 | 9 | 9 | 11 | 11 | 14 |
| D2 | 11 | 11 | 15 | 15 | 18 | 18 | 20 |
| D3 | 5,5 | 5,5 | 6,5 | 6,5 | 10 | 10 | 10 |
| F min. | 17 | 20 | 22 | 25 | 30 | 32 | 42 |
| G | 10 | 12 | 16 | 16 | 20 | 20 | 30 |
| H | 5 | 5 | 5 | 5 | 5 | 5 | 7 |
| LI | 11,5 | 12 | 14 | 14 | 16 | 16 | 24 |
| L | 45 | 52 | 65 | 75 | 95 | 115 | 140 |
| MR | 10 | 12 | 14 | 18 | 20 | 22 | 25 |
| S | 30 | 35 | 40 | 45 | 45 | 55 | 60 |
| TA | 3 | 4 | 4 | 4 | 4 | 4 | 6 |
| TZ | 3,3 | 4,3 | 4,3 | 4,3 | 4,3 | 6,3 | 6,3 |
| T | 34 | 40 | 45 | 51 | 65 | 75 | 97 |
| Z | 22 | 25 | 27 | 32 | 36 | 41 | 50 |

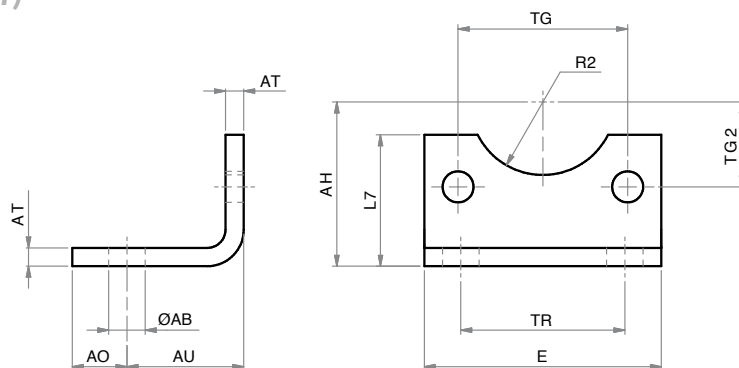
PERNO PER CERNIERA STRETTA (AA6)
PIN FOR NARROW HINGE (AA6)


LA FORNITURA COMPRENDE:
 n° 1 PERNO
 n° 1 SEEGER
 THE SUPPLY INCLUDES:
 n° 1 PIN
 n° 1 RETAINING RING

MATERIALE:
 ACCIAIO ZINCATO
 MATERIAL:
 ZINC COATED STEEL

DIMENSIONI - DIMENSIONS

| COD. | PCFS032 | PCFS040 | PCFS050 | PCFS063 | PCFS080 | PCFS100 | PCFS125 |
|--------|---------|---------|---------|---------|---------|---------|---------|
| ϕ | 32 | 40 | 50 | 63 | 80 | 100 | 125 |
| A | 3 | 4 | 4 | 4 | 4 | 4 | 6 |
| B | 4,5 | 6 | 6 | 6 | 6 | 6 | 9 |
| C | 32,5 | 38 | 43 | 49 | 63 | 73 | 94 |
| D | 1,1 | 1,1 | 1,1 | 1,1 | 1,3 | 1,3 | 1,6 |
| E | 10 | 12 | 16 | 16 | 20 | 20 | 30 |
| F | 9,6 | 11,5 | 15,2 | 15,2 | 19 | 19 | 28,6 |
| G | 4 | 4 | 5 | 5 | 6 | 6 | 7 |
| H | 41 | 48 | 54 | 60 | 75 | 85 | 110 |
| L | 14 | 16 | 20 | 20 | 24 | 24 | 36 |

PIEDINO BASSO ISO (MS1)
ISO FOOT MOUNTING (MS1)


LA FORNITURA COMPRENDE:
 n° 1 PIEDINO
 n° 2 VITI
 THE SUPPLY INCLUDES:
 n° 1 FOOT MOUNTING
 n° 2 SCREWS

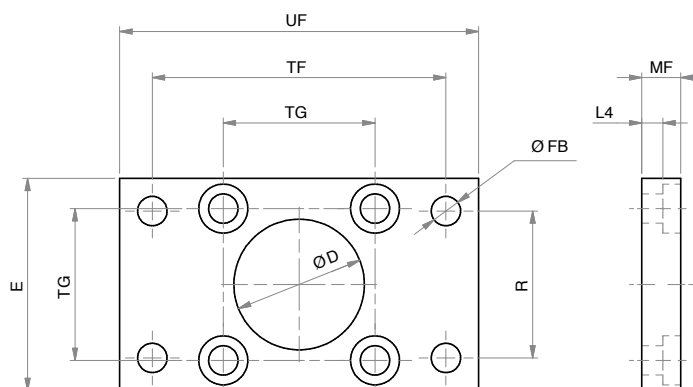
MATERIALE:
 ACCIAIO ZINCATO
 MATERIAL:
 ZINC COATED STEEL

SERIE

P
DIMENSIONI - DIMENSIONS

| COD. | PBI032 | PBI040 | PBI050 | PBI063 | PBI080 | PBI100 | PBI125 |
|------|--------|--------|--------|--------|--------|--------|--------|
| ø | 32 | 40 | 50 | 63 | 80 | 100 | 125 |
| AH | 32 | 36 | 45 | 50 | 63 | 71 | 90 |
| AO | 11 | 8 | 15 | 13 | 14 | 16 | 25 |
| AT | 4 | 4 | 5 | 5 | 6 | 6 | 8 |
| AU | 24 | 28 | 32 | 32 | 41 | 41 | 45 |
| E | 45 | 52 | 65 | 75 | 95 | 115 | 140 |
| L7 | 30 | 30 | 36 | 35 | 47 | 53 | 70 |
| ø AB | 7 | 10 | 10 | 10 | 12 | 14,5 | 16,5 |
| R2 | 15 | 17,5 | 20 | 22,5 | 22,5 | 27,5 | 30 |
| TG2 | 16,25 | 19 | 23,25 | 28,25 | 36 | 44,5 | 55 |
| TG | 32,5 | 38 | 46,5 | 56,5 | 72 | 89 | 110 |
| TR | 32 | 36 | 45 | 50 | 63 | 75 | 90 |

A richiesta - On request Ø 250-320

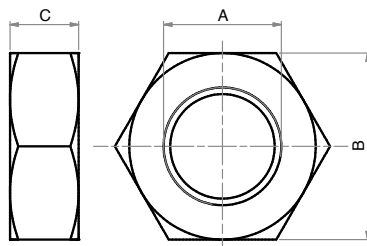
FLANGIA ISO (MF1 - MF2)
ISO FLANGE (MF1 - MF2)


LA FORNITURA COMPRENDE:
 n° 1 FLANGIA
 n° 4 VITI
 THE SUPPLY INCLUDES:
 n° 1 FLANGE
 n° 4 SCREWS

MATERIALE:
 ACCIAIO ZINCATO
 MATERIAL:
 ZINC COATED STEEL

DIMENSIONI - DIMENSIONS

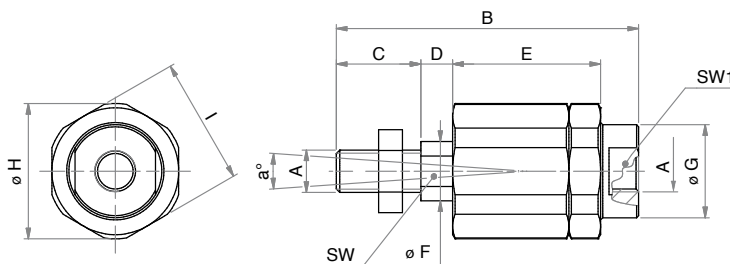
| COD. | FI032 | FI040 | FI050 | FI063 | FI080 | FI100 | FI125 |
|------|-------|-------|-------|-------|-------|-------|-------|
| ø | 32 | 40 | 50 | 63 | 80 | 100 | 125 |
| E | 45 | 52 | 65 | 75 | 95 | 115 | 140 |
| L4 | 5 | 5 | 6,5 | 6,5 | 9 | 9 | 10,5 |
| MF | 10 | 10 | 12 | 12 | 16 | 16 | 20 |
| ø D | 30 | 35 | 40 | 45 | 45 | 55 | 60 |
| ø FB | 7 | 9 | 9 | 9 | 12 | 14 | 16 |
| R | 32 | 36 | 45 | 50 | 63 | 75 | 90 |
| TF | 64 | 72 | 90 | 100 | 126 | 150 | 180 |
| TG | 32,5 | 38 | 46,5 | 56,5 | 72 | 89 | 110 |
| UF | 80 | 90 | 110 | 120 | 150 | 170 | 205 |

DADO STELO
PISTON ROD NUT


MATERIALE:
ACCIAIO ZINCATO
MATERIAL:
ZINC COATED STEEL

 SERIE
P
DIMENSIONI - DIMENSIONS

| COD. | DA06x1 | DA08x1,25 | DA10x1,25 | DA12x1,25 | DA16x1,5 | DA20x1,5 |
|----------|--------|-----------|-----------|-----------|----------|----------|
| A | M6 | M8 | M10x1,25 | M12x1,25 | M16x1,5 | M20x1,5 |
| B | 10 | 13 | 17 | 19 | 24 | 30 |
| C | 4 | 5 | 6 | 7 | 8 | 9 |

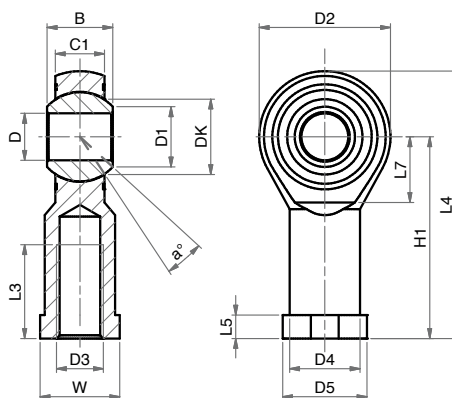
SNODO AUTOALLINEANTE
SELF-ALIGNING COUPLING


LA FORNITURA
COMPRENDE:
n° 1 SNODO
AUTOALLINEANTE
n° 1 DADO
THE SUPPLY INCLUDES:
n° 1 SELF ALIGNING
n° 1 NUT

MATERIALE:
ACCIAIO ZINCATO
MATERIAL:
ZINC COATED STEEL

DIMENSIONI - DIMENSIONS

| COD. | SA06x1 | SA08x1,25 | SA10x1,25 | SA12x1,25 | SA16x1,5 | SA20x1,5 |
|------------|--------|-----------|-----------|-----------|----------|----------|
| A | M6x1 | M8x1,25 | M10x1,25 | M12x1,25 | M16x1,5 | M20x1,5 |
| a° | 8 | 8 | 8 | 8 | 8 | 8 |
| B | 37 | 50 | 71 | 74,5 | 104 | 120 |
| C | 12 | 16 | 20 | 24 | 32 | 40 |
| D | 2,5 | 4 | 7 | 7,5 | 7 | 8 |
| E | 17,5 | 23,5 | 36 | 36 | 53 | 53 |
| ø F | 6 | 8 | 14 | 14 | 22 | 22 |
| ø G | 8,5 | 12,5 | 21,5 | 21,5 | 34 | 34 |
| ø H | 14,5 | 19 | 32 | 32 | 45 | 45 |
| I | 13 | 17 | 30 | 30 | 41 | 41 |
| SW | 5 | 7 | 12 | 12 | 19 | 19 |
| SW1 | 7 | 10 | 19 | 19 | 30 | 30 |

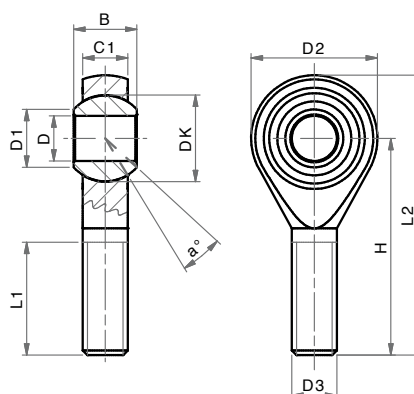
SNODO SFERICO FILETTO INTERNO
ROD EYE (INTERNAL THREAD)


MATERIALE:
CORPO IN ACCIAIO ZINCATO
SNODO IN ACCIAIO,
BRONZO E PTFE
MATERIAL:
BODY IN ZINC COATED STEEL
EYE IN STEEL, BRONZE
AND PTFE

SERIE

P
DIMENSIONI - DIMENSIONS

| COD. | SSFI06x1 | SSFI08x1,25 | SSFI10x1,25 | SSFI12x1,25 | SSFI16x1,5 | SSFI20x1,5 |
|-----------------|----------|-------------|-------------|-------------|------------|------------|
| α° | 13 | 14 | 13 | 13 | 15 | 14 |
| B | 9 | 12 | 14 | 16 | 21 | 25 |
| C1 | 6,75 | 9 | 10,5 | 12 | 15 | 18 |
| D1 | 8,9 | 10,4 | 12,9 | 15,4 | 19,3 | 24,3 |
| D2 | 20 | 24 | 28 | 32 | 42 | 50 |
| D3 | M6 | M8 | M10x1,25 | M12x1,25 | M16x1,5 | M20x1,5 |
| D4 | 10 | 12,5 | 15 | 17,5 | 22 | 27,5 |
| D5 | 13 | 16 | 19 | 22 | 27 | 34 |
| DK | 12,7 | 15,87 | 19,05 | 22,22 | 28,57 | 34,92 |
| $\varnothing D$ | 6 | 8 | 10 | 12 | 16 | 20 |
| H1 | 30 | 36 | 43 | 50 | 64 | 77 |
| L3 | 12 | 16 | 20 | 22 | 28 | 33 |
| L4 | 40 | 48 | 57 | 66 | 85 | 102 |
| L5 | 5 | 5 | 6,5 | 6,5 | 8 | 10 |
| L7 | 11 | 13 | 15 | 17 | 23 | 27 |
| W | 11 | 14 | 17 | 19 | 22 | 30 |

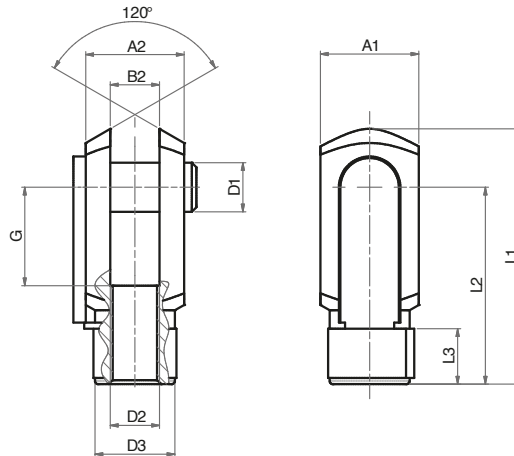
SNODO SFERICO FILETTO ESTERNO
ROD EYE (EXTERNAL THREAD)


MATERIALE:
CORPO IN ACCIAIO ZINCATO
SNODO IN ACCIAIO,
BRONZO E PTFE
MATERIAL:
BODY IN ZINC COATED STEEL
EYE IN STEEL, BRONZE
AND PTFE

DIMENSIONI - DIMENSIONS

| COD. | SSFE06x1 | SSFE08x1,25 | SSFE10x1,5 | SSFE12x1,75 | SSFE16x2 |
|-----------------|----------|-------------|------------|-------------|----------|
| α° | 13 | 14 | 13 | 13 | 15 |
| B | 9 | 12 | 14 | 16 | 21 |
| C1 | 6,75 | 9 | 10,5 | 12 | 15 |
| D1 | 8,9 | 10,4 | 12,9 | 15,4 | 19,3 |
| D2 | 20 | 24 | 28 | 32 | 42 |
| D3 | M6 | M8 | M10 | M12 | M16 |
| DK | 12,7 | 15,87 | 19,05 | 22,22 | 28,57 |
| $\varnothing D$ | 6 | 8 | 10 | 12 | 16 |
| H | 36 | 42 | 48 | 54 | 66 |
| L1 | 21 | 25 | 28 | 32 | 37 |
| L2 | 46 | 54 | 62 | 70 | 87 |

FORCELLA CON CLIPS
CLEVIS WITH LOCKABLE PIN

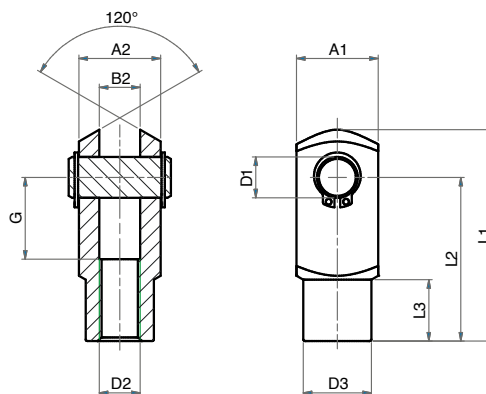
 SERIE
P


LA FORNITURA COMPRENDE:
 n° 1 FORCELLA
 n° 1 CLIPS
 THE SUPPLY INCLUDES:
 n° 1 FORK
 n° 1 LOCKABLE PIN

MATERIALE:
 ACCIAIO ZINCATO
 MATERIAL:
 ZINC COATED STEEL

DIMENSIONI - DIMENSIONS

| COD. | FC06x1 | FC08x1,25 | FC10x1,25 | FC12x1,25 | FC16x1,5 | FC20x1,5 |
|------|--------|-----------|-----------|-----------|----------|----------|
| A1 | 12 | 16 | 20 | 24 | 32 | 40 |
| A2 | 12 | 16 | 20 | 24 | 32 | 40 |
| B2 | 6 | 8 | 10 | 12 | 16 | 20 |
| ø D1 | 6 | 8 | 10 | 12 | 16 | 20 |
| D2 | M6x1 | M8x1,25 | M10x1,25 | M12x1,25 | M16x1,5 | M20x1,5 |
| ø D3 | 10 | 14 | 18 | 20 | 26 | 34 |
| G | 12 | 16 | 20 | 24 | 32 | 40 |
| L1 | 31 | 42 | 52 | 62 | 83 | 105 |
| L2 | 24 | 32 | 40 | 48 | 64 | 80 |
| L3 | 9 | 12 | 15 | 18 | 24 | 30 |

FORCELLA CON PERNO
CLEVIS WITH PIN


LA FORNITURA COMPRENDE:
 n° 1 FORCELLA
 n° 1 PERNO
 n° 2 SEGER
 THE SUPPLY INCLUDES:
 n° 1 FORK
 n° 1 PIN
 n° 2 RETAINING RING

MATERIALE:
 ACCIAIO ZINCATO
 MATERIAL:
 ZINC COATED STEEL

DIMENSIONI - DIMENSIONS

| COD. | FP06x1 | FP08x1,25 | FP10x1,25 | FP12x1,25 | FP16x1,5 | FP20x1,5 |
|------|--------|-----------|-----------|-----------|----------|----------|
| A1 | 12 | 16 | 20 | 24 | 32 | 40 |
| A2 | 12 | 16 | 20 | 24 | 32 | 40 |
| B2 | 6 | 8 | 10 | 12 | 16 | 20 |
| ø D1 | 6 | 8 | 10 | 12 | 16 | 20 |
| D2 | M6x1 | M8x1,25 | M10x1,25 | M12x1,25 | M16x1,5 | M20x1,5 |
| ø D3 | 10 | 14 | 18 | 20 | 26 | 34 |
| G | 12 | 16 | 20 | 24 | 32 | 40 |
| L1 | 31 | 42 | 52 | 62 | 83 | 105 |
| L2 | 24 | 32 | 40 | 48 | 64 | 80 |
| L3 | 9 | 12 | 15 | 18 | 24 | 30 |

SENSORI MAGNETICI

MAGNETIC SENSORS

| CARATTERISTICHE - CHARACTERISTICS | | | | | |
|---|-------|---|--|--|---|
| CODICE - CODE | | 36.SEN06 36.SEN06.L6 | 36.SEN07 | 36.SEN08 | 36.SEN09 36.SEN09.L6 36.SEN09.L10 |
| TIPO - TYPE | | REED | REED | ELETTRONICO ELECTRONIC | ELETTRONICO ELECTRONIC |
| Modello elettrico - Electrical design | | AC/DC PNP/NPN | AC/DC PNP/NPN | DC PNP | DC PNP |
| Funzione dell'uscita - Output | | NO | NO | NO | NO |
| Tensione di esercizio - Operating voltage | [V] | 5...120 AC/DC | 5...60 DC / 5...50 AC | 10...30 DC | 10...30 DC |
| Capacità di corrente - Current rating | [mA] | 100* | 100* | 100 | 100 |
| Sensibilità di reazione - Magnetic sensitivity | [mT] | 2,1 | 2,1 | 2,8 | 2,8 |
| Velocità di passaggio - Travel speed | [m/s] | > 10 | > 10 | > 10 | > 10 |
| Protezione da cortocircuito - Short-circuit proof | | no | no | si - yes | si - yes |
| Protetto da inversione di polarità Reverse polarity protection | | si - yes | si - yes | si - yes | si - yes |
| Resistente a sovraccarico - Overload protection | | no | no | si - yes | si - yes |
| Caduta di tensione - Voltage drop | [V] | < 5 | < 5 | < 2,5 | < 2,5 |
| Isteresi - Hysteresis | | 1 | 1 | < 1,5 | < 1,5 |
| Riproducibilità - Repeatability | [mm] | ± 0,2 | ± 0,2 | < 0,2 | < 0,2 |
| Corrente assorbita - Current consumption | [mA] | - | - | < 10 | < 10 |
| Tempo di commutazione - Make time | [ms] | ≤ 0,6 | ≤ 0,6 | - | - |
| Tempo di riapertura - Fall time | [ms] | ≤ 0,1 | ≤ 0,1 | - | - |
| Potenza max - Switching power max | [W] | 10 | 10 | - | - |
| Cicli di commutazione con connessione a PLC Switching cycles when connected to PLC | [mln] | ≤ 40 | ≤ 40 | - | - |
| Frequenza di commutazione - Switching frequency | [Hz] | 1.000 | 1.000 | > 10.000 | > 10.000 |
| Temperatura ambiente - Ambient temperature | [°C] | -25...70 | -25...70 | -25...80 | -25...80 |
| Grado/Classe di protezione - Protection | | IP67, II | IP67, II | IP67, III | IP67, III |
| Materiale involucri - Housing material | | PA (poliammide - polyamide) | | | |
| Materiale eccentrico di fissaggio - Fastening clamp | | inox - stainless steel | | | |
| Indicazione della funzione Stato di commutazione Function display Switching status | LED | giallo - yellow | | | |
| Collegamento - Connection | | cavo PUR - PUR cable 2x0,14 mm ² 2 m (.L6 = 6 m) | cavo PUR - PUR cable connettore M8- M8 connector 0,3 m | cavo PUR - PUR cable connettore M8- M8 connector 0,3 m | cavo PUR - PUR cable 3x0,14 mm ² 2 m (.L6 = 6 m .L10 = 10 m) |
| Peso - Weight | [g] | 31,3 69 | 12 | 12,1 | 27,4 73,5 122,4 |

Accessori inclusi: Segnaposto in gomma, fascetta fermacavo - Accessories included: Rubber placeholder, cable clip

*: necessario circuito di protezione esterno per carico induttivo (valvola, relè, ecc...). - External protective circuit for inductive load (valve, contactor, etc...) necessary.

REED: nessuna funzione LED in caso di inversione di polarità nel funzionamento DC. - No LED function in case of polarity reversal in DC operation.

SERIE

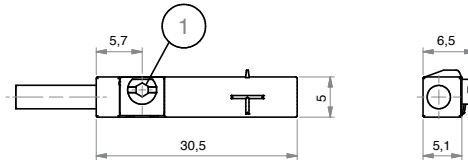
P

CONTATTO REED (2 FILI)

36.SEN06

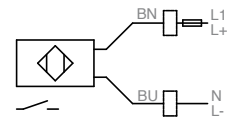
36.SEN06.L6

REED CONTACT (2 WIRES)



1= ECCENTRICO DI FISSAGGIO - FASTENING CLAMP

CABLAGGIO - WIRING



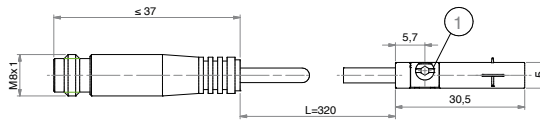
BN= MARRONE - BROWN
BU= BLU - BLUE

SERIE
P

CONTATTO REED (CONNETTORE M8)

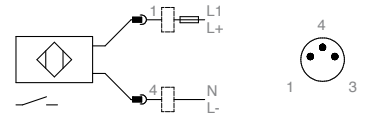
36.SEN07

REED CONTACT (M8 CONNECTOR)



1= ECCENTRICO DI FISSAGGIO - FASTENING CLAMP

CABLAGGIO - WIRING

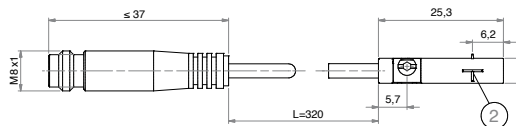


BN= MARRONE - BROWN
BU= BLU - BLUE

CONTATTO PNP (CONNETTORE M8)

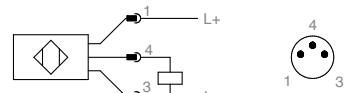
36.SEN08

PNP CONTACT (M8 CONNECTOR)



1= ECCENTRICO DI FISSAGGIO FASTENING CLAMP
2= SUPERFICIE ATTIVA SENSING FACE

CABLAGGIO - WIRING



BN= MARRONE - BROWN
BU= BLU - BLUE

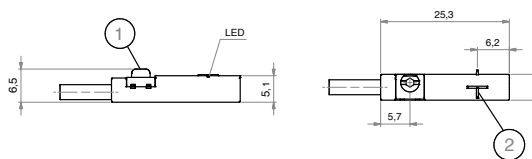
CONTATTO PNP (3 FILI)

36.SEN09

36.SEN09.L6

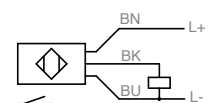
36.SEN09.L10

PNP CONTACT (3 WIRES)



1= ECCENTRICO DI FISSAGGIO - FASTENING CLAMP
2= SUPERFICIE ATTIVA - SENSING FACE

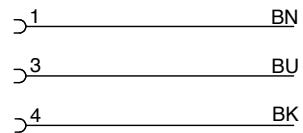
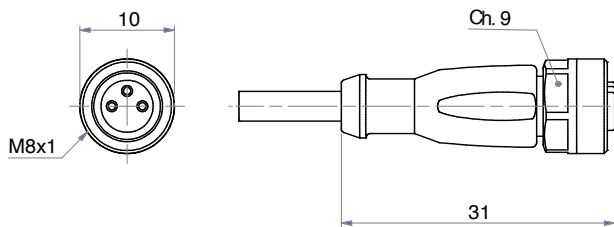
CABLAGGIO - WIRING



BK= NERO - BLACK
BN= MARRONE - BROWN
BU= BLU - BLUE

CAVO PROLUNGA (CONNETTORE M8)

EXTENSION CABLE (M8 CONNECTOR)






SERIE

P

SENSORI MAGNETICI ATEX

ATEX MAGNETIC SENSORS

| CARATTERISTICHE - CHARACTERISTICS | | 36.SEN32A.L6 | 36.SEN33A |
|---|-------|---|--|
| TIPO - TYPE | | ELETTRONICO - ELECTRONIC | ELETTRONICO - ELECTRONIC |
| Modello elettrico - Electrical design | | DC PNP | DC PNP |
| Funzione dell'uscita - Output | | NO | NO |
| Tensione di esercizio - Operating voltage | [V] | 10...30 DC | 10...30 DC |
| Capacità di corrente - Current rating | [mA] | 100 | 100 |
| Sensibilità di reazione - Magnetic sensitivity | [mT] | 2 | 2,8 |
| Velocità di passaggio - Travel speed | [m/s] | > 10 | > 10 |
| Protezione da cortocircuito - Short-circuit proof | | si - yes | si - yes |
| Protetto da inversione di polarità - Reverse polarity protection | | si - yes | si - yes |
| Resistente a sovraccarico - Overload protection | | si - yes | si - yes |
| Caduta di tensione - Voltage drop | [V] | < 2,5 | < 2,5 |
| Isteresi - Hysteresis | | 1 | < 1,5 |
| Riproducibilità - Repeatability | [mm] | < 0,2 | < 0,2 |
| Corrente assorbita - Current consumption | [mA] | < 10 | < 10 |
| Ritardo alla disponibilità - Power-on delay time | [ms] | < 30 | < 30 |
| Frequenza di commutazione - Switching frequency | [Hz] | 6.000 | 10.000 |
| Temperatura ambiente - Ambient temperature | [°C] | -20...60 | -25...60 |
| Grado/Classe di protezione - Protection | | IP 65/IP 67 | IP 65/IP 67 |
| Contrassegno - Marking of the unit | |  II 3D Ex tc IIIC T125°C Dc X  II 3G Ex nA IIC T4 Gc X |  II 3D Ex tc IIIC T125°C Dc X |
| Materiale involucro - Housing material | | PA (poliammide-polyamide) | PA (poliammide-polyamide) |
| Materiale eccentrico di fissaggio - Fastening clamp | | inox - stainless steel | inox - stainless steel |
| Indicazione della funzione Stato di commutazione Function display Switching status | LED | giallo - yellow | giallo - yellow |
| Collegamento - Connection | | cavo PVC - PVC cable 3x0,14 mm ² | cavo PVC - PVC cable connettore M12 - M12 connector |
| Lunghezza cavo - Cable length | | 6 m | 0,3 m |
| Peso - Weight | [g] | 103,3 | 52,4 |

Accessori inclusi - Accessories included: Segnaposto in gomma, fascetta fermacavo - Rubber placeholder, cable clip



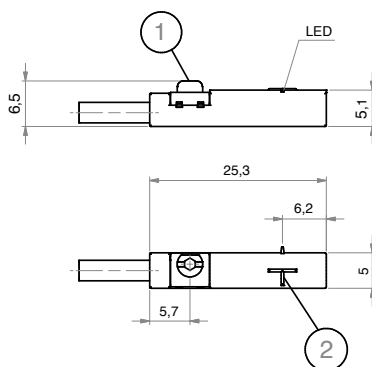
36.SEN32A.L6

CONTATTO PNP (3 FILI)

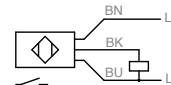
PNP CONTACT (3 WIRES)



1= ECCENTRICO DI FISSAGGIO - FASTENING CLAMP
2= SUPERFICIE ATTIVA - SENSING FACE



CABLAGGIO - WIRING



BK= NERO - BLACK
BN= MARRONE - BROWN
BU= BLU - BLUE

SERIE

P



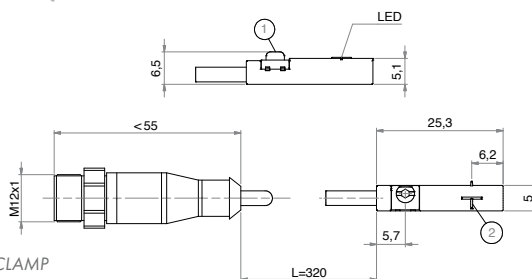
36.SEN33A

CONTATTO PNP (CONNETTORE M12)

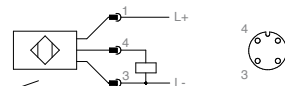
PNP CONTACT (M12 CONNECTOR)



1= ECCENTRICO DI FISSAGGIO - FASTENING CLAMP
2= SUPERFICIE ATTIVA - SENSING FACE



CABLAGGIO - WIRING



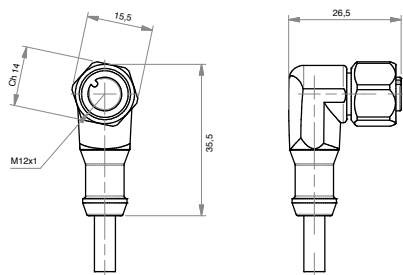
BK= NERO - BLACK
BN= MARRONE - BROWN
BU= BLU - BLUE



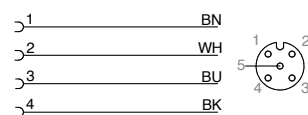
36.CAVA

CAVO PROLUNGA (CONNETTORE M12)

EXTENSION CABLE (M12 CONNECTOR)



CABLAGGIO - WIRING



BK= NERO - BLACK
BN= MARRONE - BROWN

BU= BLU - BLUE
WH= BIANCO - WHITE

| DIMENSIONI - DIMENSIONS | 36.CAV5A.M12 | 36.CAV10A.M12 |
|---|---|--|
| Modello elettrico - Electrical design | AC/DC | AC/DC |
| Tensione di esercizio - Operating voltage | [V] 60 AC / 60 DC | 60 AC / 60 DC |
| Capacità di corrente - Current rating | [A] 2 | 2 |
| Modello - Design | ad angolo - angled | ad angolo - angled |
| Temperatura ambiente - Ambient temperature | [°C] -20...60 | -20...60 |
| Grado/Classe di protezione - Protection | IP67/IP68 - IP69K fuori dalla zona esplosiva - outside hazardous areas | |
| Contrassegno - Marking of the unit | II 3G Ex nA IIC Gc - II 2D Ex tb IIIC Db IP65/IP67 | |
| Materiale corpo - Body material: Involucro - Housing | TPU arancione - orange TPU | TPU arancione - orange TPU |
| Guarnizione - Sealing | viton | viton |
| Materiale dado - Nut material | inox - stainless steel (1.4404 / 316L) | inox - stainless steel (1.4404 / 316L) |
| Coppia di serraggio per nodo nocciolo - Tightening torque for knurled nut | [Nm] 0,2...1,5 | 0,2...1,5 |
| Collegamento - Connection | cavo PUR - PUR cable / 5 m; 4 x 0,34 mm ² (42 x Ø 0,1 mm); Ø 4,9 mm; senza alogeno - alogen free | cavo PUR - PUR cable / 10 m; 4 x 0,34 mm ² (42 x Ø 0,1 mm); Ø 4,9 mm; senza alogeno - alogen free |
| Colore della guaina - Sheath colour | nero - black | nero - black |

