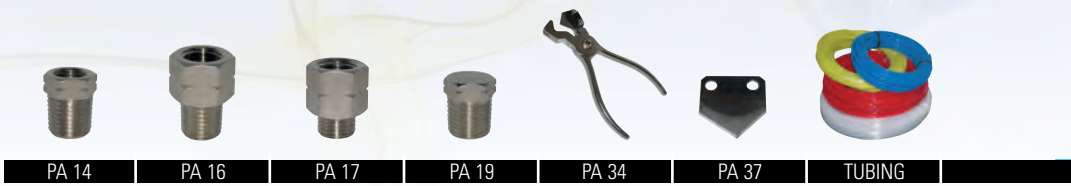


PA LINE



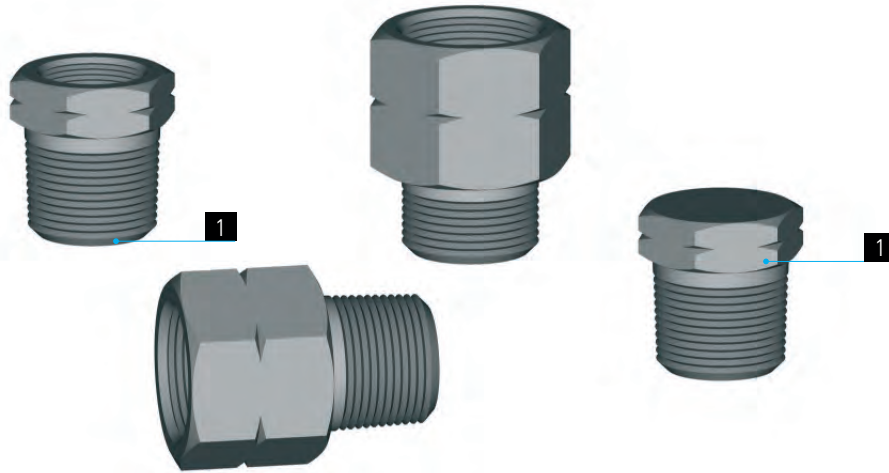
Technical remarks [52_52](#)
[53_54](#)

- PA 14
- PA 16
- PA 17
- PA 19
- PA 34
- PA 37
- TUBING



Body

Brass UNI EN 12164 CW614N Nickel Plated



To tighten threads, please check out our tightening torque chart illustrated at page 4.



THE PA LINE

PA is our range of accessories, a complement line to the Push-in and the flow control fittings. All components are brass nickel-plated.

DATA SHEET

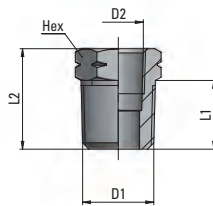
Working Temperature: from -4°F up to 158°F

Working Pressure: max. 870 psi

Application fields: Pneumatic, hydraulic and oleodynamic circuits.

PA 14

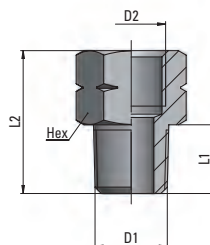
Taper Female-Male reducing connector



Part Number	D1 NPTF	D2 NPTF	L1	L2	HEX	oz
14 1/8 10-32	1/8	10-32 UNF	.334	.590	.472	-
14 1/4 1/8	1/4	1/8	.511	.748	.551	.434
14 3/8 1/8	3/8	1/8	.511	.748	.708	-
14 3/8 1/4	3/8	1/4	.511	.748	.708	.635
14 1/2 1/4	1/2	1/4	.669	.944	.866	-
14 1/2 3/8	1/2	3/8	.669	.944	.866	-

PA 16

Adaptor Male-Female, taper

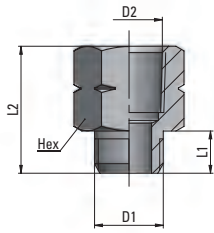


Part Number	D1 UNF	D2 BSP	L1	L2	HEX	oz
16 10-32 M5	10-32	M5x0.8	.196	.472	.315	-

Part Number	D1 NPTF	D2 BSP	L1	L2	HEX	oz
16 1/8 1/8	1/8	G1/8	.334	.748	.708	.423
16 1/4 1/4	1/4	G1/4	.511	1.063	.708	.935
16 3/8 3/8	3/8	G3/8	.511	1.063	.866	1.358
16 1/2 1/2	1/2	G1/2	.669	1.338	1.063	2.310

PA 17

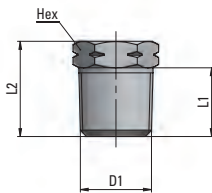
Adaptor Male-Female, parallel



Part Number	D1 NPTF	D2 BSP	L1	L2	HEX	oz
17 1/8 1/8	1/8	G1/8	.236	.708	.551	.441
17 1/4 1/4	1/4	G1/4	.315	.944	.669	.952
17 3/8 3/8	3/8	G3/8	.354	.984	.822	1.746
17 1/2 1/2	1/2	G1/2	.393	1.181	.944	1.764

PA 19

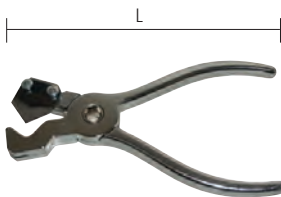
Male Plug



Part Number	D1 NPTF	L1	L2	HEX	oz
19 00 1/8	1/8	.334	.492	.472	.229
19 00 1/4	1/4	.511	.708	.551	.511
19 00 3/8	3/8	.511	.708	.708	.864
19 00 1/2	1/2	.669	.905	.866	

PA 34

Hose Cutter



Part Number	Tube OD	L	oz
34 12	from 1/8" to 1/2"	5.120	3.510
34 25	from 1/2" to 1"	7.283	10.335

PA 37

Spare Blades



Part Number	Tube OD
37 12	from 1/8" to 1/2"
37 25	from 1/2" to 1"

POLYAMIDE 12

FLEXIBLE TUBING

Limited humidity absorption, great dimensional stability at high temperatures and good chemical resistance are the major features of the C.MATIC Polyamide 12, highly recommended for all standard industrial applications.

Working temperature: from -40°F up to +212°F
 Vacuum rating: To 28" Hg
 Hardness: 64 Shore D
 Working Pressure: 4 to 1 Safety Factor
 Water absorption: 1%
 Diameter Tolerances: +/- .002

Pressure variation (%) in relation with temperature change		Part Number	Diameter			Pressure at 75°F	
			OD (in)	ID (in)	Bend Radius (in)	Working pressure (psi)	Bursting point (psi)
68°F	100%	28010000-colour	1/8	.093	.375	264	1058
104°F	85%	28010010-colour	5/32	.106	.500	348	1392
140°F	60%	28010030-colour	1/4	.180	.875	293	1174
176°F	40%	28010040-colour	5/16	.232	1.250	268	1073
212°F	35%	28010050-colour	3/8	.275	1.500	279	1116
		28010060-colour	1/2	.375	2.000	257	1029

Reel length: 100 feet.

Colours available: Neutral (N), Blue (B) and Black (BK) on stock. Other colours available upon request.

POLYURETHAN 95 DUROMETER

FLEXIBLE TUBING

C.MATIC ether based Polyurethan resists attack with moisture, humidity and fungus. It is highly abrasion and UV resistant. Its flexibility allows for assemblies in reduced spaces and for very narrow bending radius and makes of our Polyurethan 95 one of the most popular choices.

Working temperature: from -40°F up to +140°F.
 Vacuum rating: To 28" Hg
 Hardness: 95 Shore A
 Working Pressure: 3 to 1 Safety Factor
 Diameter Tolerances: +/- .003

Pressure variation (%) in relation with temperature change		Part Number	Diameter			Pressure at 75°F	
			OD (in)	ID (in)	Bend Radius (in)	Working pressure (psi)	Bursting point (psi)
68°F	100%	28060000-colour	1/8	.0625	1/4	256	768
86°F	83%	28060010-colour	5/32	3/32	3/8	193	580
104°F	72%	28060030-colour	1/4	.160	1/2	169	507
122°F	64%	28060040-colour	5/16	.216	3/4	140	420
140°F	47%	28060050-colour	3/8	.245	7/8	164	493
		28060060-colour	1/2	.320	1 1/8	169	507

Reel length: 100 feet.

Colours available: Neutral (N), Blue (B) and Black (BK) on stock. Other colours available upon request.

POLYAMIDE 12 HR (PA12 HR)

FLEXIBLE TUBINGS

Working temperature: from -40°F up to 176°F.
 Working Pressure: 3 to 1 Safety Factor
 Reel length: 328 feet (100 mt.)
 Colours available: Black

Pressure variation (%) in relation with temperature change		Part Number	Diameter			Pressure at 75°F	
			OD (in)	ID (in)	Bend Radius (in)	Working pressure (psi)	Bursting point (psi)
14°F	120%	08130030-N	1/4	.142	1.969	1305	3741
32°F	110%	08130050-N	3/8	.197	3.150	1261	3785
68°F	100%						
86°F	83%						
104°F	72%						
122°F	64%						
140°F	52%						
176°F	47%						

PA11 and PTFE tubings available upon request.