



PU LINE



PU 10-11

PU 10-12

MULTI PROFILE SOCKET

56_57
PU 10-11
PU 10-12



PU 42-11

PU 42-12

PU 42-20

PU 42-21

SAFETY COUPLER

58_59
PU 42-11
PU 42-12
PU 42-20
PU 42-21



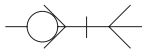
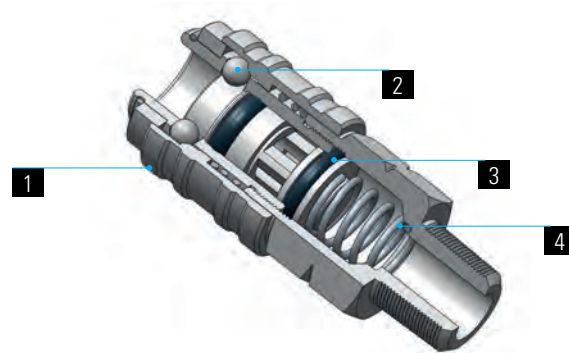
P 113

P 213

MULTIPLE CONNECTOR

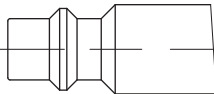
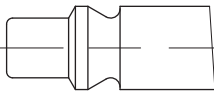
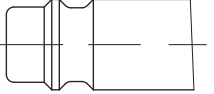
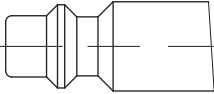
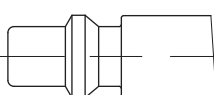
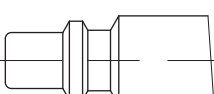
60_61
P 113
P 213

1	2	3	4	
Body	Balls	Seals	Spring	Plug
Brass UNI EN 12164 CW614N Nickel Plated	Stainless steel AISI420	NBR	Stainless steel AISI302	Hardened zinc plated steel



Suitable with following plugs profiles	Flow rate at 87 psi
--	---------------------

actual size

	INDUSTRIAL Profile (MIL C4109)	46 SCFM
	ARO 210 Profile	41 SCFM
	German Profile	56.5 SCFM
	ISO 6150 B Profile	45 SCFM
	Standard Swedisch Profile	45 SCFM
	Standard Italian Profile	38 SCFM

MULTI PROFILE SOCKET

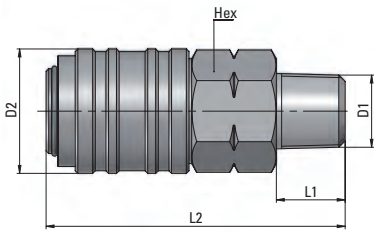
C.MATIC SS single shut off coupler is Industrial Interchangeable and suitable with the most common European plugs profiles.


DATA SHEET

Working Temperature: from -4°F up to 158°F
Working Pressure: from 0 psi up to 218 psi
Application fields: Pneumatic equipment, Air tools

PU 10-11

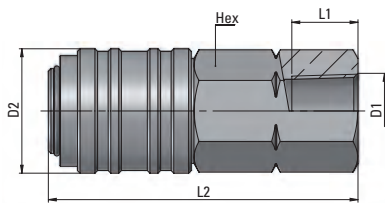
Male couplig




Part Number	D1 NPTF	D2	L1	L2	HEX (mm)	oz 
11 00 14	1/4	.925	.512	2.224	20	3.527
11 00 38	3/8	.925	.512	2.224	20	3.527
11 00 12	1/2	.925	.669	2.343	24	4.780

PU 10-12

Female couplig



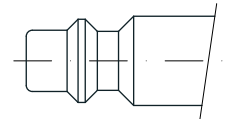
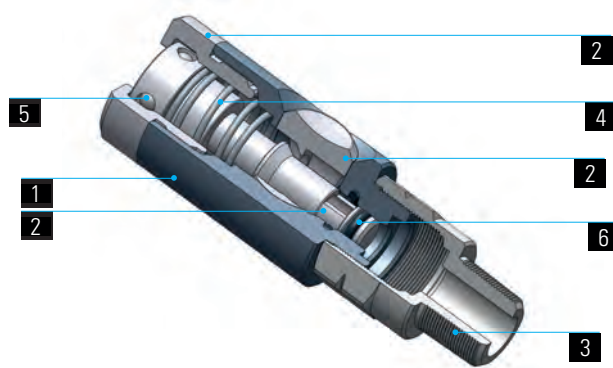
Part Number	D1 NPTF	D2	L1	L2	HEX (mm)	oz 
12 00 14	1/4	.925	.492	2.303	20	3.986
12 00 38	3/8	.925	.492	2.303	20	3.668
12 00 12	1/2	.925	.531	2.441	24	4.956

For further info on the plugs to use, please revert to the **PU 42 section**.

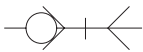


To tighten threads, please check out our tightening torque chart illustrated at page 4.

1	2	3	4	5	6
Body	Button, Valve and Venting ring	Thread	Springs	Balls	Seals
Anodised Aluminium	Hardened, zinc plated steel	Brass nickel plated UNI EN 12164 CW614N	Stainless Steel AISI 302	Stainless Steel AISI 420	NBR
					Plugs
					Hardened, zinc plated steel



INDUSTRIAL Profile
MIL C4109 Profile
ISO 6150 B-12 Profile



DATA SHEET

Complying with ISO4414 Norm
Nominal Diameter (DN): .217 in
Working Temperature: from -4°F up to 158°F
Working Pressure: 232 psi
Flow rate: 33.89 SCFM (at 87 psi and assembled plug)

To tighten threads, please check out our tightening torque chart illustrated at page 4.



CONNECTION

Insert the plug into the coupler

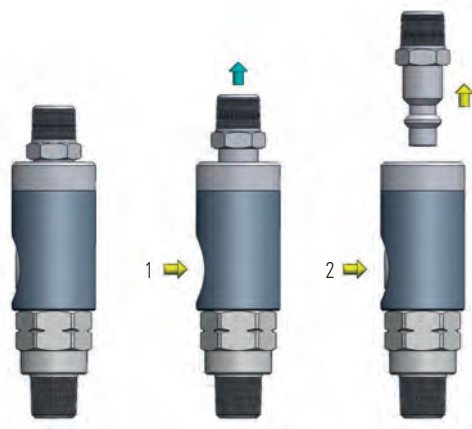
TO RELEASE

Follow instructions below :

Plug inserted in coupler

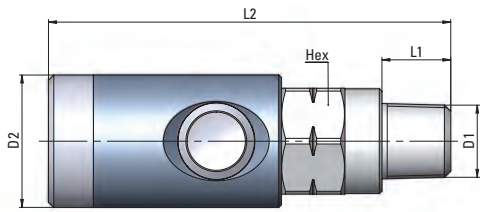
Step 1: Press the button once to vent the downstream air from the circuit; at this time the plug is still captive in the coupling.

Step 2: Press the button one more time to release the plug.



PU 42-11

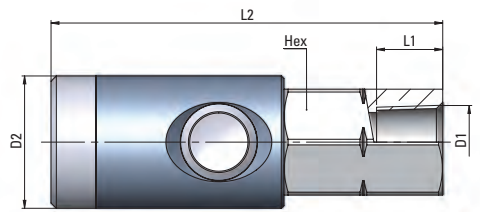
Male couplig



Part Number	D1 NPTF	D2	L1	L2	HEX (mm)	oz
11 00 14	1/4	.984	.512	2.992	20	3.884
11 00 38	3/8	.984	.512	2.992	20	-
11 00 12	1/2	.984	.669	3.031	24	-

PU 42-12

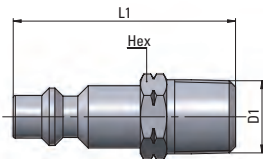
Female couplig



Part Number	D1 NPTF	D2	L1	L2	HEX (mm)	oz
12 00 14	1/4	.984	.492	2.913	20	4.501
12 00 38	3/8	.984	.492	2.913	20	4.162
12 00 12	1/2	.984	.531	2.913	24	4.938

PU 42-20

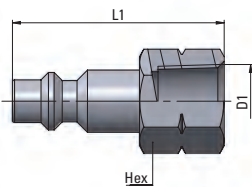
INDUSTRIAL Male plug



Part Number	D1 NPTF	L1	HEX (mm)	oz
20 00 14	1/4	1.654	14	.797
20 00 38	3/8	1.654	18	1.009
20 00 12	1/2	1.850	22	1.52

PU 42-21

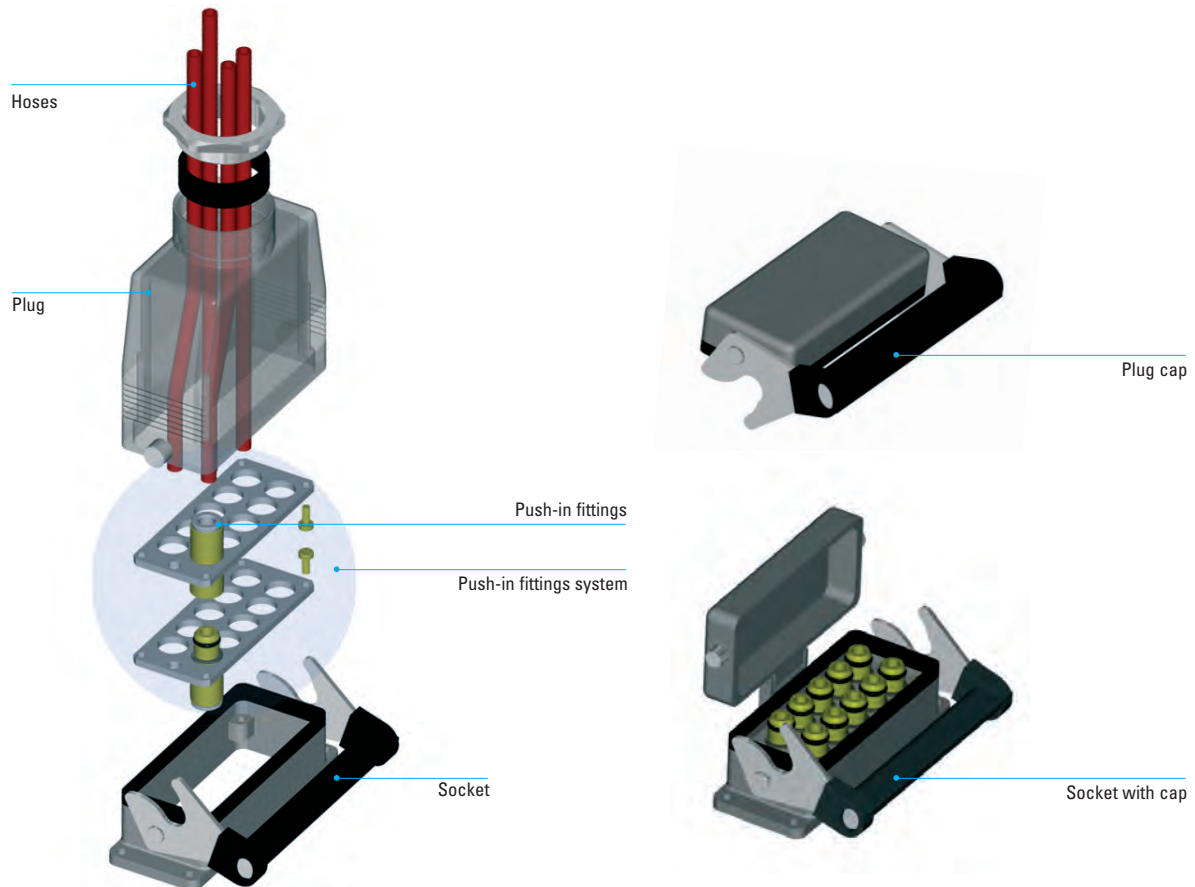
INDUSTRIAL Female plug



Part Number	D1 NPTF	L1	HEX (mm)	oz
21 00 14	1/4	1.575	17	.991
21 00 38	3/8	1.575	20	1.115
21 00 12	1/2	1.732	24	1.764

MULTIPLE CONNECTOR

Multiple connector sheath	Couplings support	Seals	Push-in fittings
Light die cast alloy	Aluminium	NBR	PN Push-In fittings



MULTIPLE CONNECTOR

The multiple connector is made of a fixed part to be connected to the control device of pneumatic powered machines and a mobile part to be assembled to the air distribution equipment.

The big advantage offered by it, is that a bundle of hoses, varying from min 10 to max 20 tubings, can be rapidly and safely connected and disconnected.

Our multiple connector is manufactured in such a way that the reverse assembly of the two parts is not possible.

DATA SHEET

Recommended tubings:

PA 6, PA 11, PA 12,
Polyethylene PE, Polyurethane PU (95
durometer or above)

Working Temperature:
from -4 °F up to 160°F

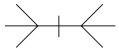
Working Pressure:
max 218 psi

Vacuum rating: to 28" Hg

Application fields:
Pneumatic circuits.

P 113

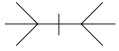
Equipped with push-in fittings



Part Number	Tube OD	Couplings n°	oz
113 5/32 12	5/32	12	24.868
113 1/4 10	1/4	10	29.877

P 213

Equipped with push-in fittings



Part Number	Tube OD	Couplings n°	oz
213 5/32 20	5/32	20	32.946
213 1/4 14	1/4	14	37.884



Type	A	B	C	D	E	F	G	H	L	Ø
P113	3.661 (93)	3.937 (100)	1.772 (45)	4.449 (113)	4.055 (103)	1.260 (32)	1.102 (28)	3.386 (86)	1.417 (36)	.177 (4.5)
P213	4.724 (120)	3.937 (100)	1.772 (45)	5.512 (140)	5.118 (130)	1.260 (32)	1.102 (28)	4.449 (113)	1.417 (36)	.177 (4.5)

