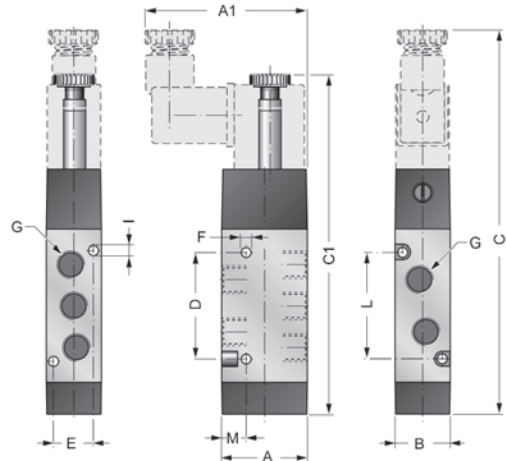


VALVE / VALVOLA 5/2

SINGLE SOLENOID PILOT - INTERNAL PRESSURE RETURN AND SPRING
 COMANDO ELETTROPNEUMATICO - RIPRISORNIAMENTO A MOLLA PNEUMATICA E MECCANICA



| Size Taglia | A | A1 | B | C | C1 | D | E | F | G | Ø1 | L | M |
|----------------|----|-----|----|--------|------|----|------|-----|------|-----|----|-----|
| 1/8 | 28 | -53 | 18 | -125,5 | 112 | 35 | 13 | 3,2 | G1/8 | 3,2 | 35 | 8 |
| 1/4 | 32 | -55 | 22 | 142,5 | -129 | 50 | 16,2 | 4,2 | G1/4 | 3,5 | 50 | 7,3 |

JT52W101.



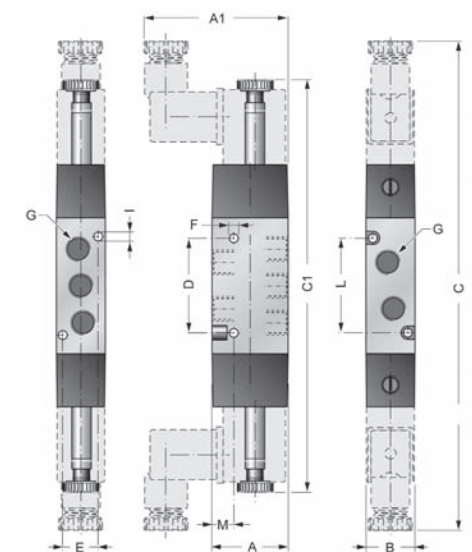
SIMBOLS / SIMBOLI



JT52W101.

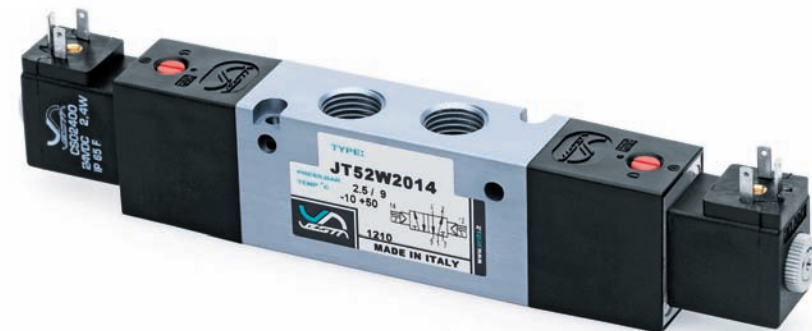
VALVE / VALVOLA 5/2 - 5/3

DOUBLE PNEUMATIC PILOT (MID-POSITION PRESSURIZED) / DOPPIO COMANDO PNEUMATICO (CENTRI IN PRESSIONE)
 DOUBLE PNEUMATIC PILOT (MID-POSITION CLOSED) / DOPPIO COMANDO PNEUMATICO (CENTRI CHIUSI)
 DOUBLE PNEUMATIC PILOT (MID-POSITION EXHAUSTED) / DOPPIO COMANDO PNEUMATICO (CENTRI APERTI)

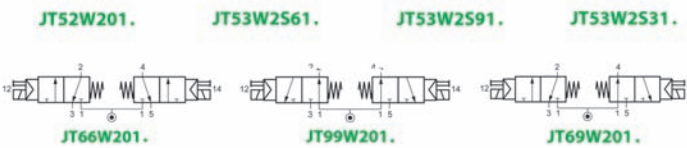


| Size Taglia | A | A1 | B | C | C1 | D | E | F | G | Ø1 | L | M |
|----------------|----|-----|----|-----|------|----|------|-----|------|-----|----|-----|
| 1/8 | 28 | -53 | 18 | 180 | -152 | 35 | 13 | 3,2 | G1/8 | 3,2 | 35 | 8 |
| 1/4 | 32 | -55 | 22 | 202 | -174 | 50 | 16,2 | 4,2 | G1/4 | 3,5 | 50 | 7,3 |

JT5.W2.1.

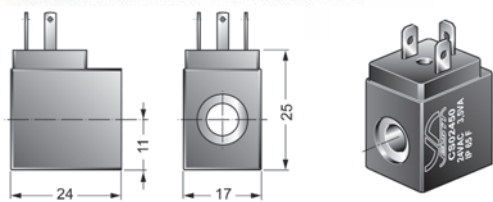


SIMBOLS / SIMBOLI



CODES / CODICI

| Code ordination Codice ordinazione | Voltage Tensione |
|---------------------------------------|---------------------|
| CS01200 | 12 V DC |
| CS02400 | 24 V DC |
| CS02450 | 24 V 50/60Hz AC |
| CS11050 | 110 V 50/60Hz AC |
| CS22050 | 220 V 50/60Hz AC |



COILS
 SOLENOIDI PER ELETTROVALVOLE

CS



ELEKTRO-AUTOMATIC
 05-820 Piastów k/W-wy
 ul. Orzeszkowej 64
 tel./fax 22 723-15-43
 tel. 22 753-94-79
 e-mail: biuro@pneumatyka.org

www.pneumatyka.org



jt valves
 evolution series

jt valves
 evolution series

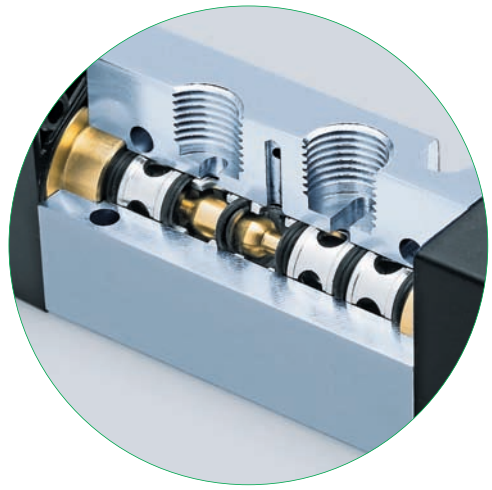


Vesta Automation srl
 via Martiri di Belfiore, 69/A
 45100 Rovigo (Italy)
 Tel. +39 0425.474.838
 Fax +39 0425.474.670

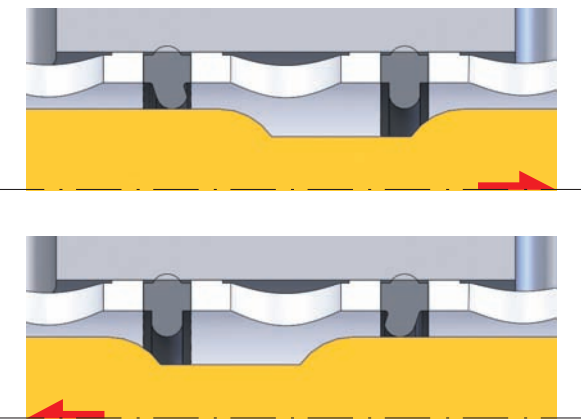
www.vesta.it
info@vesta.it



jt valves evolution series



- high smoothness brass spool surface
- + special shape of flexible nosing seal.
- designed to grant low friction and long wearing.



- spola in ottone con superficie molto curata
- + guarnizione a profilo di tenuta flessibile.
- studiati per ottenere bassi attriti e garantire lunga durata.

The new JT series is the evolution of previous successful Vesta valves.

This series combines a more than 20 year experience in manufacturing valves with high quality, high precision machining and completely Made in Italy production. As result JT series grants excellent performances and high reliability.

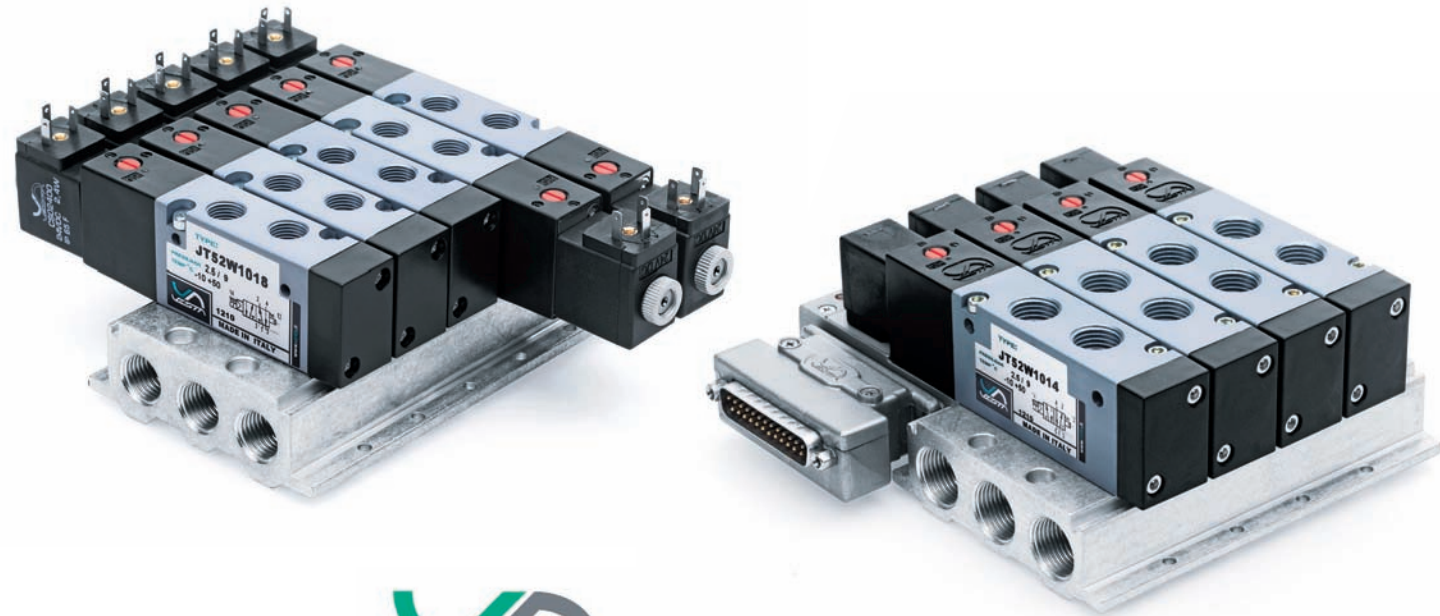
The new series is available in 1/8" and 1/4" sizes with all functions and in solenoid operator as well as pneumatic pilot version, also assembled on manifolds with multipoleconnection system.

La nuova serie di valvole serie JT è nata come sintesi ed evoluzione delle precedenti serie di valvole prodotte e distribuite da Vesta.

La serie JT è il risultato di più di 20 anni di esperienza nello sviluppo e produzione di valvole ed elettrovalvole completamente Made in Italy e mette insieme eccellenti prestazioni con un elevato grado di affidabilità.

La gamma è disponibile nelle taglie 1/8" ed 1/4" in tutte le funzioni sia ad elettropilota che con pilotaggio ad impulso pneumatico.

L'intera gamma è disponibile anche nella versione manifold con connessioni multipolari.

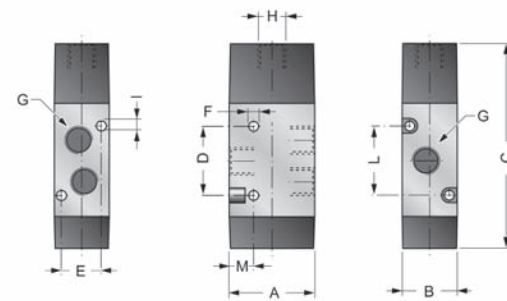


JT SERIES TECHNICAL FEATURES / CARATTERISTICHE TECNICHE

COMMON TECHNICAL FEATURES JT SERIES / CARATTERISTICHE TECNICHE COMUNI SERIE JT

| | | | |
|-------------------------------------|---|----------------------------|---|
| Port connections | G1/8, G1/4 | Connessioni | G1/8, G1/4 |
| Normal air flow | G1/8" = 560 NI/min G1/4" = 1050 NI/min | Portata nominale | G1/8" = 560 NI/min G1/4" = 1050 NI/min |
| Environment temperature range | -10 °C + +50 °C | Temperatura ambiente | -10 °C + +50 °C |
| Temperature range of medium | 0 °C + +40 °C | Temperatura fluido | 0 °C + +40 °C |
| Lubrication | Not required | Lubrificazione | Non necessaria |
| Max pressure | 9 bar | Pressione massima | 9 bar |

VALVE / VALVOLA 3/2 SINGLE PNEUMATIC PILOT - INTERNAL PRESSURE RETURN AND SPRING COMANDO PNEUMATICO - RIPROZZIONAMENTO A MOLLA PNEUMATICA E MECCANICA



| Size | A | B | C | D | E | ØF | G | H | ØI | L | M |
|------|----|----|------|------|------|-----|------|------|-----|------|-----|
| 1/8 | 28 | 18 | 66,2 | 22,2 | 13 | 3,2 | G1/8 | G1/8 | 3,2 | 22,2 | 8 |
| 1/4 | 32 | 22 | 75,3 | 29,3 | 16,2 | 4,2 | G1/4 | G1/8 | 3,5 | 29,3 | 7,3 |

JT32P1.1



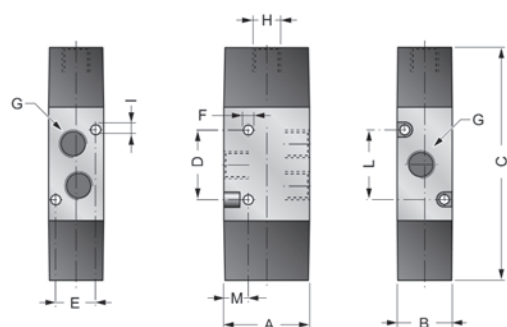
SIMBOLS / SIMBOLI



JT32P161

JT32P191

VALVE / VALVOLA 3/2 DOUBLE PNEUMATIC PILOT / DOPPIO COMANDO PNEUMATICO

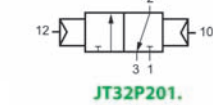


| Size | A | B | C | D | E | ØF | G | H | ØI | L | M |
|------|----|----|------|------|------|-----|------|------|-----|------|---|
| 1/8 | 28 | 18 | 76,2 | 22,2 | 13,5 | 3,2 | G1/8 | G1/8 | 3,2 | 22,2 | 8 |
| 1/4 | 32 | 22 | 88,3 | 29,3 | 16,2 | 4,2 | G1/4 | G1/8 | 3,5 | 29,3 | 7 |

JT32P201

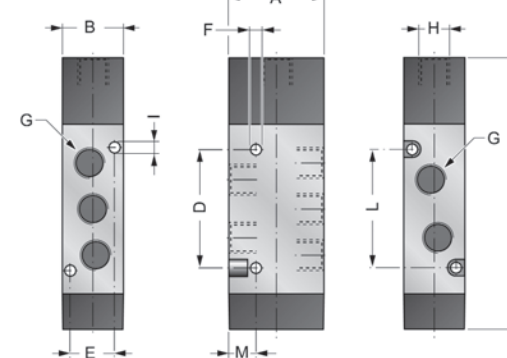


SIMBOL / SIMBOLO



JT32P201

VALVE / VALVOLA 5/2 SINGLE PNEUMATIC PILOT - INTERNAL PRESSURE RETURN AND SPRING COMANDO PNEUMATICO - RIPROZZIONAMENTO A MOLLA PNEUMATICA E MECCANICA

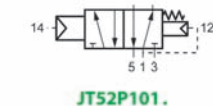


| Size | A | B | C | D | E | ØF | G | H | ØI | L | M |
|------|----|----|----|----|------|-----|------|------|-----|----|-----|
| 1/8 | 28 | 18 | 80 | 35 | 13 | 3,2 | G1/8 | G1/8 | 3,2 | 35 | 8 |
| 1/4 | 32 | 22 | 96 | 50 | 16,2 | 4,2 | G1/4 | G1/8 | 3,5 | 50 | 7,3 |

JT52P101

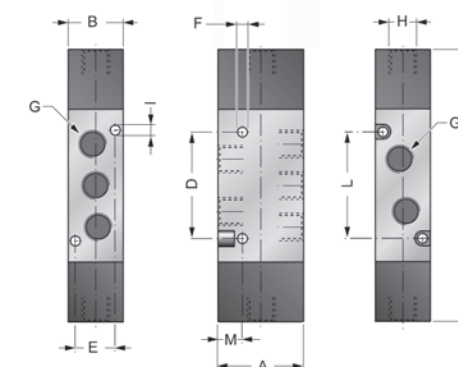


SIMBOL / SIMBOLO



JT52P101

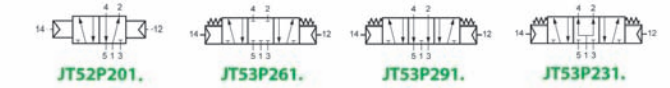
VALVE / VALVOLA 5/2 - 5/3 DOUBLE PNEUMATIC PILOT (MID-POSITION PRESSURIZED) / DOPPIO COMANDO PNEUMATICO (CENTRI IN PRESSIONE) DOUBLE PNEUMATIC PILOT (MID-POSITION CLOSED) / DOPPIO COMANDO PNEUMATICO (CENTRI CHIUSI) DOUBLE PNEUMATIC PILOT (MID-POSITION EXHAUSTED) / DOPPIO COMANDO PNEUMATICO (CENTRI APERTI)



| Size | A | B | C | D | E | ØF | G | H | ØI | L | M |
|------|----|----|-----|----|------|-----|------|------|-----|----|-----|
| 1/8 | 28 | 18 | 89 | 35 | 13 | 3,2 | G1/8 | G1/8 | 3,2 | 35 | 8 |
| 1/4 | 32 | 22 | 109 | 50 | 16,2 | 4,2 | G1/4 | G1/8 | 3,5 | 50 | 7,3 |



SIMBOLS / SIMBOLI



JT52P201

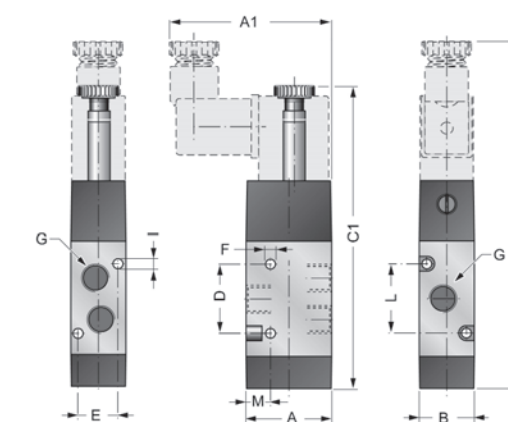
JT53P261

JT53P291

JT53P231

JT32W1S.1

VALVE / 3/2 SINGLE SOLENOID PILOT - INTERNAL PRESSURE RETURN AND SPRING COMANDO ELETTROPNEUMATICO - RIPROZZIONAMENTO A MOLLA PNEUMATICA E MECCANICA



| Size | A | A1 | B | C | C1 | D | E | ØF | G | ØI | L | M |
|------|----|-----|----|-------|--------|------|------|-----|------|-----|------|-----|
| 1/8 | 28 | -53 | 18 | 112,5 | -99 | 22,2 | 13 | 3,2 | G1/8 | 3,2 | 22,2 | 8 |
| 1/4 | 32 | -55 | 22 | 121 | -107,5 | 29,3 | 16,2 | 4,2 | G1/4 | 3,5 | 29,3 | 7,3 |



SIMBOLS / SIMBOLI

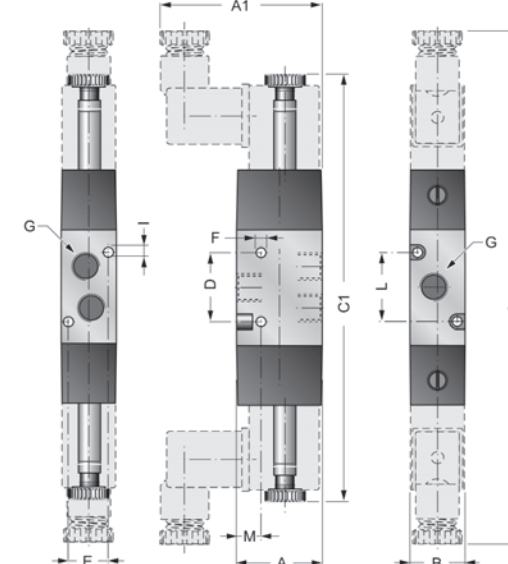


JT32W1S91

JT32W1S61

JT32W2S01

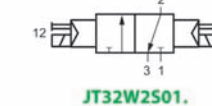
VALVE / VALVOLA 3/2 DOUBLE SOLENOID PILOT / DOPPIO COMANDO ELETTROPNEUMATICO



| Size | A | A1 | B | C | C1 | D | E | ØF | G | ØI | L | M |
|------|----|-----|----|-----|------|------|------|-----|------|-----|------|-----|
| 1/8 | 28 | -53 | 18 | 170 | -143 | 22,2 | 13 | 3,2 | G1/8 | 3,2 | 22,2 | 8 |
| 1/4 | 32 | -55 | 22 | 181 | -154 | 29,3 | 16,2 | 4,2 | G1/4 | 3,5 | 29,3 | 7,3 |



SIMBOLS / SIMBOLI



JT32W2S01